



**PT PLN (Persero)**

## **4th Quarterly Report**

**(January – December 2025)**

Sustainable Energy Access in Eastern Indonesia -  
Electricity Grid Development Program Phase 2

Result Based Lending (RBL) – ADB

31 December 2025

# Table of Contents

	<b>Abbreviations</b>	<b>3</b>
<b>1.</b>	<b>INTRODUCTION</b>	<b>5</b>
1.1.	Background	5
1.2.	Program Scope of Work	6
1.3.	Scope of this Quarterly Report	6
<b>2.</b>	<b>PROGRAM STRUCTURE, MANAGEMENT AND IMPLEMENTATION</b>	<b>7</b>
2.1.	ADB Results-Based Lending Program	7
2.2.	PLN Program Management and Implementation	9
<b>3.</b>	<b>ADB RBL PROGRAM IMPLEMENTATION STATUS</b>	<b>10</b>
3.1.	Summary of DLI Achievements as of Reporting Period	10
3.2.	Eligibility for Disbursement As of December 2025 (Million USD)	12
3.3.	Disbursement Linked Indicators (DLIs)	13
3.3.1.	RBL DLI 1: Increased number of total PLN Customers	13
3.3.2.	RBL DLI 2: Increased number poor household	13
3.3.3.	RBL DLI 3: MV Feeder Permanent Interruptions	15
3.3.4.	RBL DLI 4: Additional Length Of Medium Voltage (MV) Distribution Lines	16
3.3.5.	RBL DLI 5: Green Energy Promotion	16
3.3.6.	RBL DLI 6: Asset and Waste Management	19
3.3.7.	RBL DLI 7: Consumer Education	23
3.3.8.	RBL DLI 8: Integrating E-Procurement and SAP Systems	27
<b>4.</b>	<b>Non-Disbursement Linked Indicators</b>	<b>28</b>

4.1. RBL Non-DLI 1: Improved Time Use	28
4.2. RBL Non-DLI 2	29
4.3. RBL Non-DLI 3	29
<b>5. Grant Implementation</b>	<b>30</b>
5.1. Grant JFPR (Japan Fund for Poverty Reduction)	30
5.2. Grant ACEF (Asian Clean Energy Fund)	32
<b>6. Program Action Plan (PAP) Implementation Programs</b>	<b>34</b>
<b>7. APPENDIX</b>	<b>45</b>

## Abbreviations

ADB	=	Asian Development Bank
PLN	=	Perusahaan Listrik Negara (State Electricity Company)
DKBB	=	Distribusi Kalimantan Barat (West Kalimantan Distribution)
DKSKT	=	Distribusi Kalimantan Selatan dan Kalimantan Tengah (South and Central Kalimantan Distribution)
DKTKU	=	Distribusi Kalimantan Timur dan Kalimantan Utara (East and North Kalimantan Distribution)
WMMU	=	Wilayah Maluku dan Maluku Utara (Maluku and North Maluku Region)
WP2B	=	Wilayah Papua dan Papua Barat (Papua and West Papua Region)
DIV KPJ	=	Divisi Pusat Kebijakan (Policy Center Division)
DIV KEU	=	Divisi Keuangan Korporat (Corporate Finance Division)
DIV MEB	=	Divisi Aneka Energi Baru Terbarukan (Various Renewable Energy Division)
AP2T	=	Aplikasi Pelayanan Pelanggan Terpusat (Centralized Customer Service Application)
APKT	=	Aplikasi Pengaduan dan Keluhan Terpadu (Integrated Complaints Management Application)
ckm	=	Circuit kilometre
COD	=	Commercial Operation Date
DLI	=	Disbursement-Linked Indicator
ERP	=	Enterprise Resource Planning
FPR	=	Financing for Prior Results
GIS	=	Geographic Information System
GWh	=	Gigawatt-hour

IVA	=	Independent Verification Agent
KPI	=	Key Performance Indicator
kV	=	Kilovolt
MVA	=	Megavolt-ampere
PAP	=	Program Action Plan
PID	=	Project Implementation Document (ADB)
PLN	=	Perusahaan Listrik Negara (State-Owned Electricity Company)
PMU	=	Program Management Unit
PPA	=	Power Purchase Agreement
RBL	=	Results Based Lending (ADB)
RUPTL	=	Rencana Usaha Penyediaan Tenaga Listrik (Electricity Power Supply Business Plan)
SAIDI	=	System Average Interruption Duration Index
SAIFI	=	System Average Interruption Frequency Index
SILM	=	Sistem Informasi Laporan Manajemen (Management Reporting Information System)
KMP	=	Kalimantan, Maluku and Papua

# 1. INTRODUCTION

## 1.1. Background

On December 8th, 2020, PT PLN (Persero) signed the loan agreements with ADB, worth US\$600 million (period 2020-2025) and On December 2, 2025, the ADB approved a partial loan cancellation request, including a cancellation of USD 47.5 million for DLI 5 allocation and USD 1.2 million for DLI 6 allocation, and the final plafond from US\$600 million to US\$551,25 million, effective on November 19, 2025. The ADB loans will support Sustainable Energy Access in Eastern Indonesia - Electricity Grid Development Program Phase 2.

The program is dedicated to the nine provinces across Kalimantan, Maluku, and Papua (KMP) in Eastern Indonesia, namely West Kalimantan, South Kalimantan, Central Kalimantan, East Kalimantan, North Kalimantan, Maluku, North Maluku, Papua, and West Papua.

The goal of the program is to support the development of electricity distribution networks to connect business and households and to enhance the quality of life in Eastern Indonesia by the sustainable use of electricity as a key driver of increased economic activity. This will contribute to the overall objective of sustainable economic and social development in the Eastern regions of Indonesia.

This program follows a Results-Based Lending (RBL) structure, in which funds are disbursed in stages and only disbursed to PLN when the mutually agreed Disbursement-Linked Indicators (DLI) are met (if disbursement is adjusted to the achievement of part or all the DLI targets). DLI is results-oriented rather than process-oriented, allowing PLN the flexibility to use its processes and systems to manage funds and achieve program outcomes.

In addition to the DLIs, PLN has agreed to implement a series of actions set out in Program Action Plans (PAPs), which are also included as loan covenants in the ADB loan agreements.

## 1.2. Program Scope of Work

The scope of work for the ADB can be detailed as follows:

<b>ADB RBL</b>
<p><b>Output 1: Power Distribution Network strengthened and expanded.</b> The Program shall be tracked by the installed length of medium-voltage distribution lines (DLI 4).</p>
<p><b>Output 2: Renewable energy use increased.</b> Electricity provided to communities in the target areas will be from a mix of power sources, including small diesel generators, which are the most common for remote grids. Output 2, supported by the ACEF grant, explicitly focuses on increasing power generation from solar photovoltaic (PV), mini- and micro-hydro, and small biogas power plants (DLI 5).</p>
<p><b>Output 3: Institutional capacity strengthened and social monitoring enhanced.</b> Output 3 focuses on improving asset and waste management (DLI 6) and on enhancing social and gender aspects through the PLN workshop on safe and productive energy use, with at least 30 % female participation (DLI 7). The electronic procurement and contract payment system will be integrated and rolled out to improve reporting and monitoring (DLI 8).</p>

## 1.3. Scope of this Quarterly Report

This Quarterly Report is intended to provide periodic progress updates to ADB regarding (i) the achievements of overall program results; (ii) status of the DLIs and DLI verification protocols; (iii) the status of covenants in the loan and grant agreements; and (iv) the outcomes of the PAP implementation program.

This Quarterly Report covers the reporting periods from **January 1<sup>st</sup>, 2025, until December 31, 2025.**

## 2. PROGRAM STRUCTURE, MANAGEMENT AND IMPLEMENTATION

### 2.1. ADB Results-Based Lending Program

The ADB Results-Based Lending (RBL) program focuses on sustainable energy access in Eastern Indonesia – Electricity Grid Development Program.

These are the key milestones of ADB L4009-INO :

- a. ADB Approval: Nov 24<sup>th</sup>, 2020
- b. Loan Signing : Dec 8<sup>th</sup>, 2020
- c. Guarantee Signing : Dec 16<sup>th</sup>, 2020
- d. Loan Effectiveness : Jan 14<sup>th</sup>, 2021
- e. Implementation Period : Jan 2020 – Dec 2025 (5 years)
- f. Program Completion : Dec 31<sup>st</sup>, 2025
- g. Loan closing : Jun 30<sup>th</sup>, 2026

An allocation and withdrawal of Loan Proceeds and the breakdown of the ADB RBL disbursement allocations for Kalimantan, Maluku, and Papua (KMP) according disbursement schedule for 2020-2025 on Aide Memoire Loan Inception Mission February 2021 is shown below in Table 1.

**Table 1 : Disbursement Schedule on \$ million (Source: ADB)**

DLI	Original Allocation	Allocation After Loan Cancellation	Prior Result	2020	2021	2022	2023	2024	2025
1	150	150		30	30	30	30	30	
2.1	60	60	25	7	7	7	7	7	
2.2	15	15	5	2	2	2	2	2	
JFPR	3	3	1	1	1	0.4			
3	90	90		18	18	18	18	18	
4	120	120		24	24	24	24	24	
5	50	2.5		2.5					
ACEF	3	3		1	1	1			
6	65	63.75		11	11	11	11	11	8.75
7	30	30		6	6	6	6	6	
8	20	20	4	0	4	4	4	4	
<i>Total Loan</i>	600	551.25	34	100.5	102	102	102	102	8.75
<i>Total Grant</i>	6	6	0.6	2	2	1.4	0	0	0
<b>TOTAL Loan and Grant</b>	606	557.25	34.6	102.5	104	103.4	102	102	8.75

The monitoring target values for each of the results indicators over the loan period (2020 to 2025) are shown in Table 2. These indicators will be monitored through the Program Action Plan (PAP).

**Table 2 : ADB RBL Disbursement Allocations (Source: ADB)**

No	Metric	Definition of Indicators	Units	Disbursement Allocated (\$ million)
<b>Outcome</b>				
1	Increase number of total PLN KMP customers	Minimum target of increased customers is 6,77	Million customers	150
2	Increase the number of poor households provided with PLN electricity	Minimum target of increased customers 112.428 includes 10% female-headed households	poor household	75
<i>JFPR Grant</i>		<i>All poor households</i>		3
3	Feeder line permanent interruptions in the distribution system.	Maximum annual rate increased allowed for feeder line is 14,37	Interruption per 100 ckm	90
<b>Outputs</b>				
4	Increased number of Installed lengths of MV distribution lines	Minimum rate of cumulative installed length of MV lines is 63.692	ckm	120
5	Additional Power generation from Renewable Energy	Minimum rate of additional MWh annually is 40.000 MWh and further 48.000 MWh by 2025	MWh	2,5
<i>ACEF Grant)</i>		<i>An additional MWh annually is 40.000 MWh by 2025</i>	<i>MWh</i>	3
6	Improvement Asset and waste management improved, with (i) 90% of used PLN-owned equipment in Kalimantan, Maluku and Papua included in the disposal inventory as of end-2019, safely disposed by 2025, and (ii) 25 additional warehouses holding environmental permits by 2024	Used PLN equipment is safely disposed of at least 90% of the 2019	%	63,75
7	Consumer education workshops on safe and productive energy use	PLN holds workshops each of the 5 UIWs and 29 UP3 with a minimum of 30% female participation (1,0 points) or 50% female participation (1,25 points), total 121 points by 2024	point	30
8	Integrating E-Procurement and SAP systems	Both systems are integrated and rolled out, and at least 80% of contracts in financial value by 2024		20
<b>TOTAL (Loan only)</b>				<b>557,25</b>
<b>TOTAL (Grant)</b>				<b>6</b>

PLN will implement and also supervise, monitor, and report the progress in this ADB RBL program that has eight disbursement-linked indicators (DLIs), three non-disbursement-linked indicators (non-DLIs), Loan and Grant Compliance, and Program Action Plan (PAP).

## 2.2. PLN Program Management and Implementation

PLN formed a Project Management Unit (PMU) and a Project Implementation Unit (PIU) specifically for the ADB RBL programs in PLN Kalimantan, Maluku, and Papua. The PMU consists of internal PLN staff drawn from various divisions within PLN Head Office (e.g. DIV KEU, DIV RSD, DIV ODM, DIV ODS, DIV RSK, DIV TEK, DIV MRP, etc). The organisational structure of the PMU and PIU is shown in Figure 1 below. This is the news of PMU and PIU that changes due to reorganisation and effective since 22 December 2023.

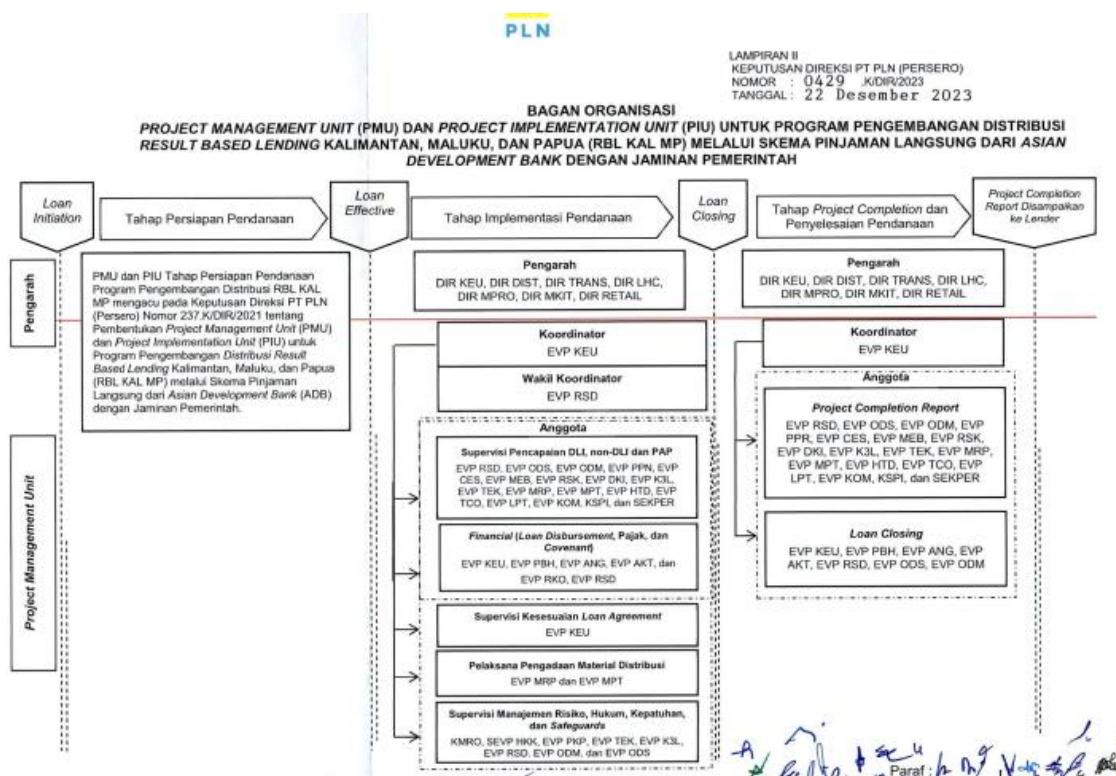


Figure 1 : PMU/PIU Organisational Structure (Source : PLN)

### 3. ADB RBL PROGRAM IMPLEMENTATION STATUS

#### 3.1. Summary of DLI Achievements as of Reporting Period

Table 3 presents a summary of DLI Achievements for the latest quarter of 2025, based on the evaluation results from PLN.

**Table 3 : Summary of DLI Achievements RBL-ADB**

DLI No.	Target	PLN Reviewed (as of 31 <sup>th</sup> of December 2025)	Achieved/ Not Achieved
1	6.77 Million customers (2024)	7.74 million (data TUL 309 dan AP2T)	Not Counted
2	2.1 112,428 poor households (2024)	325,286 poor households (Data from AP2T – DTKS Information)	Not Counted
	2.2 11,243 poor female-households (2024)	103,819 poor households (Data from AP2T)	Not Counted
3	14.97/100 ckm permanent interruptions (2024)	3.80 / 100 ckm	Not Counted
4	63,692 ckm MV lines for KMP (2024)	68,306 ckm	Not Counted
5	5.1. Additional 40,000 MWh generated from solar PV, mini/micro hydro and small biogas plants (2025) 5.2. Another 48,000 MWh generated from solar PV, mini/micro hydro, and small biogas plants (2025)	Total Energy until December 2025: 2.909,23 MWh (with exclusion and include baseline)	Not Counted
6	(i) 100% of inventory of used equipment for disposal as of end-2019 approved by MSOE (2025) (ii) 90% of 2019 inventory safely disposed (iii) 25 (cumulative) additional warehouses have secured the environment permit from DLH	(i). 100% of inventory of used equipment for disposal as of end-2019 approved by MSOE (ii). 83.7% of 2019 inventory safely disposed. (iii). 28 (cumulative) additional warehouses have secured the environment permit from DLH	Not Counted

<b>DLI No.</b>	<b>Target</b>	<b>PLN Reviewed (as of 31<sup>th</sup> of December 2025)</b>	<b>Achieved/ Not Achieved</b>
7	Consumer education workshops held at each of 29 UP3 with minimum 30% female participation among consumers. Cumulative points required. For disbursement: 121	30 UP3 with 137.75 points	Not Counted
8	At least 80% of contracts in financial value executed by UIW (including units under them) recorded in E-Proc+SAP integrated system (2024)	31%	Not Counted
Non-DLI 1	Improved time use reported by women and men because of electricity access, measured in: <ul style="list-style-type: none"> <li>• Hours/week on household work and care activities (women/men)</li> <li>• hours/week on productive activities (women/men)</li> <li>• hours/week on social/community activities (women/men)</li> </ul>		
Non-DLI 2	At least one pilot community-based training on solar PV maintenance delivered with minimum 30% female participation  Training module developed for future scale up of community training by PLN (2020-2022)	0 Pilot community training Training materials from the basic maintenance of PLTS have been prepared by PLN Pusdiklat and is expected to be conducted in 2025	2020-2022
Non-DLI 3	Capacity for social monitoring: Annual report on social impact of electrification with data disaggregated by sex published by end of 2023 and end of 2024	Sustainability Report which contains material on the social impacts of ADB's 2024 electrification program will be published in Q2 2025 (2024 report)  Meanwhile for PLN Annual sustainability report (2023 report) had uploaded in PLN website.	Start from 2022 - 2025

### 3.2. Eligibility for Disbursement As of December 2025 (Million USD)

Based on the results of the achievement of DLI performance until December 2025, the total disbursement for loans is USD543.25 million or 90.54%. While PLN total achievement is USD543.25 million and DLI performance interim 2025, the total disbursement eligibility for loans is USD543.25 million, which has been withdrawn with the following details:

*In USD million*

DLI	Total ADB Fin. Allocation	RBL 01	RBL 02	RBL 03	RBL 04	RBL 05	RBL 06	RBL 07	RBL 08	RBL 09	RBL 10	RBL 11	Total Disbursement after RBL 11	Eligible 2025 Interim Disbursement	Total Disbursement After 2025 Interim Mission
		17-Nov-21	16-Nov-21	8-Dec-21	28-Apr-22	6-Dec-22	15-Sep-23	15-Nov-23	27 Aug 2024	10 Sept 2024	5 Dec 2024	25 Sep 2025			
		2020 Annual	Advance Financing (AF)	2021 Interim	2021 Annual - Liq. of AF	2022 Interim	2022 Annual (1st tranche)	2022 Annual (2nd tranche)	2022 Annual (3rd tranche)	2022 Annual (4th tranche) 2023 Interim 2023 Annual	2024 Interim	2024 Annual			
1	150	28.33		21.65	24.55	16.96	15.66	9.84		33.00	0.00	0.005000	150.000000	0.000000	150.000000
2	75			54.42	3.03	1.62		2.47		13.47	0.00	0.000000	75.000000	0.000000	75.000000
3	90	18			17.42	0.58		18.00		18.00	0.00	18.000000	90.000000	0.000000	90.000000
4	120	24.89		7.93		12.90		4.69	2.79	40.68	10.006597	16.10445798	120.000000	0.000000	120.000000
5	50								0.00	2.50	0.00	0.000000	2.500000	0.000000	2.500000
6	65			8.8		15.77			16.63	18.82	3.501100	0.007700	63.522000	0.23326720	63.755267
7	30			3		7.29			0.93	11.74	4.551695	2.27589145	29.793103	0.20689655	30.000000
8	20	4				4.00			2.40	1.60	0.00	0.000000	12.000000	0.000000	12.000000
Advance			104.78		(45.00)	(59.12)	(0.66)								
<b>TOTAL</b>	<b>600</b>	<b>75.22</b>	<b>104.78</b>	<b>95.8</b>	<b>0.00</b>	<b>0.00</b>	<b>15.00</b>	<b>35.00</b>	<b>22.75</b>	<b>139.81</b>	<b>18.059392</b>	<b>36.39304943</b>	<b>542.815104</b>	<b>0.44016375</b>	<b>543.255267</b>
<b>% Potential disbursement against total loan amount (after 2025 interim review mission)</b>													90.47%		90.54%

**Figure 2 : Loan Disbursement Eligibility Performance Summary (Source: ADB)**

*In USD million*

DLI	Total ADB Financing Allocation	RBL01	RBL02	RBL03	Total Disb. as of June 2024	Remaining Eligible Disbursement up to 2023 Annual Disbursement	Total Potential Disbursement after 2023 Annual Mission
		15-Nov-21	28-Apr-22	03-May-24			
		AF	2021 Annual - Liquidation of AF	2022 Annual			
2.1	3	0	0.75	0.5	1.25	1.75	3.00
Advance		0.75	-0.75		0	0.00	0.00
<b>TOTAL</b>	<b>3</b>	<b>0.75</b>	<b>0</b>	<b>0.5</b>	<b>1.25</b>	<b>1.75</b>	<b>3.00</b>
<b>% Disbursement against total grant amount (after 2023 annual review mission)</b>							100%

**Figure 3 : Grant JFPR Disbursement Eligibility Performance Summary (Source: ADB)**

*In USD million*

DLI	Total ADB Financing Allocation	Total Disbursement as of June 2024	Eligible Disbursement up to 2023 Interim	Eligible Disbursement up to 2023 Annual	Total Potential Disbursement after 2023 Interim Mission
5.1	3	0	0.50	0.00	0.50
Advance		0	0.00	0.00	0.00
<b>TOTAL</b>	<b>3</b>	<b>0</b>	<b>0.50</b>	<b>1.00</b>	<b>0.50</b>
<b>% Disbursement against total loan amount (after 2023 annual review mission)</b>					17%

**Figure 4 : Grant ACEF Disbursement Eligibility Performance Summary (Source: ADB)**

### 3.3. Disbursement Linked Indicators (DLIs)

#### 3.3.1. RBL DLI 1: Increased number of total PLN Customers

As of December 2025, PLN has a total number of approximately 7.74 M customers in Kalimantan, Maluku and Papua, which is above of the ADB RBL target of 6.77 M for 2024. Data for this indicator are extracted from the SILM system, which has an integrated link to PLN's customer database (AP2T).

NO	UNIT	ACTUAL Q4 2025
1	WKBB	1.705.094
2	WKSKT	2.537.338
3	WKTKU	1.681.848
4	WMMU	889.415
5	WP2B	932.791
	<b>KALIMANTAN</b>	<b>5.924.280</b>
	<b>MALUKU DAN PAPUA</b>	<b>1.822.206</b>
	<b>KMP</b>	<b>7.746.486</b>

Figure 5 : Number of Total PLN KMP Customers As of Q4 2025

#### 3.3.2. RBL DLI 2: Increased number poor household

Data for ADB RBL DLI 2 data is taken from the AP2T system on all matching DTKS info and is calculated from 2019 up to December 2025 manually due to screening for duplicate data that appears. The calculation mechanism has been approved by IVA and ADB on the 2021 interim mission review so that for the realization of 2019 to December 2025 there are 325,286 poor households and 103,819 of them are female households. Based on the compilation of data downloaded from AP2T-Info DTKS 2019 up to December 2025 are as follows:

NO	UNIT (DLI 2.1)	ACTUAL Q4 2025
1	WKBB	113.924
2	WKSKT	101.950
3	WKTKU	44.935
4	WMMU	37.821
5	WP2B	26.656
	<b>KALIMANTAN</b>	<b>260.809</b>
	<b>MALUKU DAN PAPUA</b>	<b>64.477</b>
	<b>KMP</b>	<b>325.286</b>

Figure 6 : DTKS information data on AP2T-Info DTKS in 2019 up to December 2025 As of Q4 2025

NO	UNIT (DLI 2.2)	ACTUAL Q4 2025
1	WKBB	35.173
2	WKSKT	34.864
3	WTKU	14.716
4	WMMU	10.807
5	WP2B	8.259
<b>KALIMANTAN</b>		<b>84.753</b>
<b>MALUKU DAN PAPUA</b>		<b>19.066</b>
<b>KMP</b>		<b>103.819</b>

Figure 7 : DTKS information data on AP2T-Info DTKS in 2019 up to December 2025 As of Q4 2025

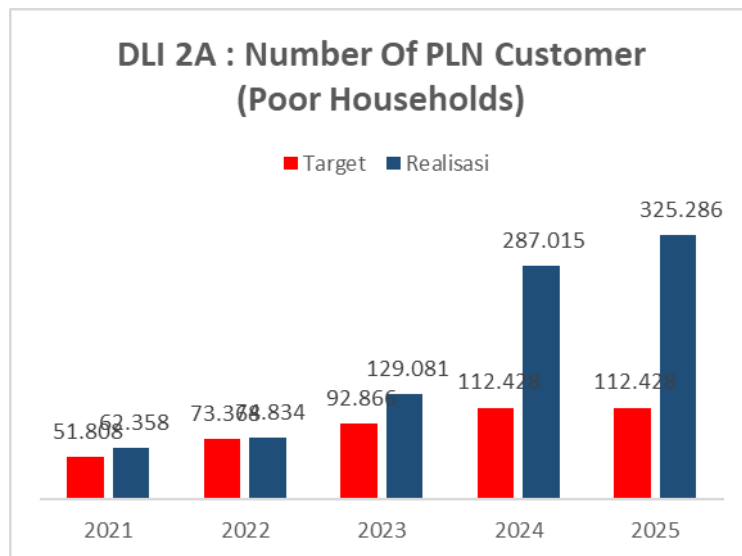


Figure 8 : Additional Poor Households customer As of Q4 2025

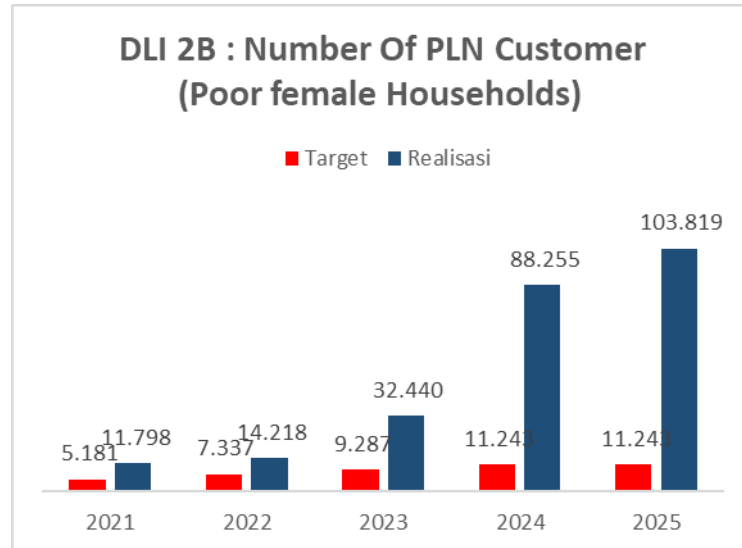


Figure 9 : Additional Poor Households customer As of Q4 2025

### 3.3.3. RBL DLI 3: MV Feeder Permanent Interruptions

The number of permanent JTM disturbances reported in the KMP during the period Q4 2025 is 3.80 interruptions > 5 minutes per 100 ckm, compared to the ADB RBL target of 14,37 disturbances per 100 ckm for 2024. Data for this DLI is extracted from SILM, although the source data is filled from the Distribution Control Centre of each PLN Wilayah. The general disturbance reduction program for KMP is carried out both technically and non-technically. Technically, it takes the form of pruning and cutting trees with relevant stakeholders, installing animal barriers, walk down care for assets (CFA), etc. For non-technical, namely synchronization of maintenance outage schedules, development of monitoring applications and execution of troubleshooting, etc.

NO	UNIT	ACTUAL Q4 2025
1	WKBB	3,73
2	WSKT	1,85
3	WKTKU	3,66
4	WMMU	5,68
5	WP2B	6,78
		3,80

Figure 10 : Permanent Interruption in Q4 2025

### 3.3.4. RBL DLI 4: Additional Length Of Medium Voltage (MV) Distribution Lines

As of Q4 2025, the total length of installed medium voltage distribution network (MV) assets during 2021 after deducting 43.91 ckm (from confirmation of the JTM UIW 2021 realization screening form) is 57,112 ckm because several realizations of work go to KBA/IP areas, which from ADB RBL 2024 full years target of 63,692 ckm. The achievement of the Q4 2025 is 68,306 ckm.

Data for this DLI is extracted from SILM, though the source data is filled in manually with input from each of the PLN Wilayahhs.

NO	UNIT	ACTUAL Q4 2025
1	WKBB	17.142
2	WKSKT	20.602
3	WKTU	12.677
4	WMMU	9.184
5	WP2B	8.701
	<b>KALIMANTAN</b>	<b>50.421</b>
	<b>MALUKU DAN PAPUA</b>	<b>17.885</b>
	<b>KMP</b>	<b>68.306</b>

Figure 11 : Number of Total Distribution MV Lines As of Q4 2025

### 3.3.5. RBL DLI 5: Green Energy Promotion

Green energy promotion targets in 2020 (i) are List of EBTKE assets to be transferred to PLN which have been completed by PLN and 2020 (ii) KSO model or other legal instruments with PEMDA approved by PLN Director. PLN sent a letter to ESDM dated October 26, 2021 regarding the Submission of Follow-up for PLT EBT for Asset Transfer Through PMPP PT PLN (Persero).

After going through a long process in 2021 – 2022, the document KSO model was not realized because then a reorganization took place at PLN from the Regional Directorate to the Generation Management Directorate. In March 2023 the Director of Finance conveyed to the Director of Generation Management to prepare KSO Procedure Standards that apply throughout Indonesia as a form of achieving the DLI 5 target.

Completion of the KSO Document was then carried out by the Generation Management Directorate and discussions were held with the parties involved regarding the

preparation of this KSO Model, with DIV RSK, DIV OKI and DIV DKI. The KSO model draft has been approved by Generation Management Director in March 17, 2023. Furthermore, this document has been submitted to the distribution units in the Kalimantan, Maluku dan Papua Region on November 10, 2023.

The green energy promotion target in 2025 is that the annual production from the 2018 baseline is 3.309 MWh and the 2025 target is 40.000 MWh, and the additional 2025 target is 48.000 MWh. Total realization of RE production for the classification of types and capacities of PLTS <10 MW, MHP <1 MW, and PLTBio <100 kW (total kit capacity) in Q4 2025 is 2,909 MWh.

As of 31st of December 2025, PLN achieved 17,045.66 MWh power generation from 236 power plants in KMP. After exclusion of 14.136 MWh and 3,309.1 MWh of baseline 2018, the eligible DLI 5 achievement is 2,909.23 MWh, which is below 2021 target (i). As per verification protocol, late achievement is only allowed for full achievement of the set target. Therefore, PLN is not eligible for partial achievement of 2021 target (i). PLN may request disbursement from the eligible loan and ACEF grant amounts and advance financing to support the implementation of its programs and activities to achieve DLI 5.

UIW	EBT Type	Ownership	Total	Total Installed Capacity (kW)	Total Energy Production in Jan-Okt 2025 (kWh)	Total Energy Production in Jan-Okt 2025 with exclusion Cat. A, exc. Excess Power & exc. Procurement (kWh)
			Unit			
MKIT / PLN NP (ex-UIKL KAL)	PV	PLN-Owned	0	0	-	-
	PV	Rent / ESDM	3	450	-	-
UID KALBAR	Hydro	PLN-Owned	4	525	15.260,00	15.260,00
	Hydro	Excess Power	2	1.120	10.901.316,00	-
	PV	PLN-Owned	2	411	174.210,72	-
UID KALTIMRA	Hydro	Rent / ESDM	3	0	-	-
	PV	PLN-Owned	2	430	67.753,70	67.753,70
	PV	Rent / ESDM	3	300	-	-
UIW MMU	PV	PLN-Owned	13	2.385	46.228,07	46.228,07
UIW P2B	Hydro	PLN-Owned	5	735	227.260,57	196.417,57
	Hydro	Rent / Pemda	1	160	468.257,70	468.257,70
	PV	PLN-Owned	202	9.871	2.263.060,51	1.620.593,58
	PV	Rent / EBTKE	2	200	-	-
<b>Grand Total</b>			<b>242</b>	<b>16.587</b>	<b>14.163.347,27</b>	<b>2.414.510,61</b>
					<b>3.262.031,27</b>	<b>2.414.510,61</b>

Figure 12 : The additional RE Production in 2025

Year	DLI Target 1 (MWh)	DLI Target 2 (MWh)	Verified Result
Baseline 2018	-	-	-
2020	-	-	-
2021	9.600	13.600	-859,45
2022	16.800	28.800	-533,04
2023	25.600	49.600	12.699,76
2024	35.200	75.200	-
2025	40.000	88.000	-

Figure 13 : The Baseline Target Year

PLN plans to meet the target of RE power generation through the following programs and will provide prognosis for 2024-2025 from each program.

(i) 82 PLTS planned for COD in 2024-2025 under Lisdes program which is funded by PMN from previous years.

(ii) 10 PLTS upgrade to include remote monitoring and hybridization using EMS in 2025 with estimated annual power generation of 2,162 MWh/year.

(iii) PLTS revitalization of existing non-operated/de-rated PLTS, two was completed with 129.6 MWh/year in Derawan, 28.96 MWh/year in Pulau Tiga (COD in May 2024), and ten are expected for COD in 2025: 832.20 MWh/year in Banda, 832.20 MWh/year in Wonreli, 631.18 MWh/year in Tahalupu, and 4,993.20 MWh/year in Daruba and other six PLTS: 25.16 MWh/year in Teor, 656.31 MWh/year in Kur, 664.92 MWh/year in Kwaki, 840.93 MWh/year in Amarsekaru, 251.06 MWh/year in Pulau Panjang, 2080.50 MWh/year in Elat are expected for COD in 2025.

Unit	PLTS	IC (kWp)	Estimated Production MWh/Year	Description
Kaltimra	PLTS Derawan #3	370 (120)	286,6 (86,5)	Finish 120 kWp
Kalbar	PLTS Temajuk	371 (80)	601,0 (200)	On Going (Operation)
	PLTS Sidding	40	64,8	On Going
	PLTS Limbung	256	-	Canceled
<b>Total</b>			<b>952,5</b>	

Figure 14 : PLTS Asset Revitalization Plan

### 3.3.6. RBL DLI 6: Asset and Waste Management

The management of asset write-offs follows the procedures of the Director's Decree No. 015.E / 870 / DIR / 1998 concerning Withdrawal of Operational Assets into Non-Operational Assets, Director Decree No. 1233 / DIR / 2011 concerning Procedures for Elimination and Transfer. Fixed Assets of PT PLN (Persero), Statement of Decree of the Minister of State-Owned Enterprises regarding Amendments to the Articles of Association of PL PLN (Persero), and Letter of the Director of Finance and Risk Management of PT PLN (Persero) No. 48091/LOG.0103/C01070000/2021 dated September 13, 2021 regarding Notification of Amendment to the Articles of Association regarding the Authorization of AT/ATTB Write-Off Approval and Changes in AT/ATTB Write-off Business Process Flows at the Head Office. B3 Waste Category Used Equipment (ATTB) that has been removed from operating assets will be managed as B3 Waste. PLN DIV K3L has prepared a Draft Decree of the Director of Hazardous Waste Management which has been submitted to the Legal Department for review. Due to the pandemic, it is difficult for SPI to physically check ATTB at UIW.

The target of Asset and Waste Management in 2024 is 90% of inventory of used equipment for disposal as of end-2019 approved by MSOE or relevant PLN authority and 65% of 2019 inventory safely disposed. Meanwhile, the target for ownership of environmental documents at the used equipment warehouse in 2024 is 28 environmental documents SPPL, UKL/UPL, or DPLH. Especially for SPPL environmental documents, it is necessary to fill out a waste warehouse inspection form either by Zite application or manually.

The UIW proposal at KMP that has been used as a target that has been submitted to the PLN Head Office is Rp. 13,5 billion.

Type of ATTB	Proposal	Approval	Disposal	Progress status in AV 2023
<b>UIW Kalselteng</b>	Letter No 2421/KEU.04.03/B13000000/2020 dated 28 August 2020 regarding Proposal for ATTB Write-off 2020	Letter No. 16/DK-PLN/2022 dated 31 January 2022 regarding approval for proposal for ATTB write-off and material PLN Unit	Minutes of work handover between PT PLN UIW Kalselteng with PT Pindad Enjiniring Indonesia, first-party number: 0435.BA/LOG.01.01/D13000000/2022 and second party number: BA/09/PE/BD/VIII/2022 dated 29 August 2022. (only non-hazardous waste)	
ATTB - Distribution line	14,056,039	14,056,039	14,056,039	DLI 6 (i) Achieved
ATTB - Distribution Substations	518,411,861	518,411,861	0	DLI 6 (ii) Partially achieved
ATTB - Distribution other equipment	344,390,708	344,390,708	344,390,708	
<b>Total</b>	<b>876,858,608</b>	<b>876,858,608</b>	<b>358,446,747</b>	
<b>Kalbar</b>	Letter No. 3729/KEU.03.01/B12000000/2020 dated 21 December 2020 regarding Proposal for ATTB Write-off and Write-off Material	Letter No. 158/DK-PLN/2022 dated 22 November 2022 regarding approval for proposal for ATTB write-off and material PLN Unit	Minutes of work handover between PT PLN UID Kalimantan Barat and PT Energy Management Indonesia. First party No: 1031.BA/DAN.01.02/F12000000/2023 and second party No: 112.2/BA/PB/J/III/2023 on 14 August 2023. (for non-hazardous waste)	
Distribution other equipment (i.e. kWh meter)	2,673,423,570	2,673,423,570	2,673,423,570	DLI 6 (i) Achieved
Distribution substation (incl. transformers and cables)	3,761,626,382	3,761,626,382	2,655,055,364	DLI 6 (ii) Partially achieved
<b>Total</b>	<b>6,435,049,952</b>	<b>6,435,049,952</b>	<b>5,328,478,934</b>	
<b>UIW Kaltimra</b>	Letter No. 3209/LOG.01.03/B14000000/2020 dated 15 December 2020 regarding Proposal for UIW Kaltimra ATTB Write-off 2020 in the Form of kWh meter.	Letter No. 15/DK-PLN/2022 dated 31 January 2022 regarding approval for proposal for ATTB write-off and material PLN Unit	Minutes of work handover on used equipment (ATTB) between PT PLN Wilayah Kalimantan Timur dan Kalimantan Utara and PT Pindad Enjiniring Indonesia, first-party number: 0484.BA/LOG.01.01/D14000000/2022 and second party number: BA/08/PE/BD/VIII/2022 pada tanggal 15 August 2022. (for non-hazardous waste)	
kWh meters	4,637,717,867	4,637,717,867	4,637,717,867	DLI 6 (i) Achieved
<b>Total</b>	<b>4,637,717,867</b>	<b>4,637,717,867</b>	<b>4,637,717,867</b>	DLI 6 (ii) Achieved
<b>UIW MMU</b>	Letter No. 0783/LOG.01.03/B17000000/2021 dated 31 March 2021 regarding Proposal for UIW MMU ATTB Write-off	Letter No. 191/DK-PLN/2023 dated 22 December 2023 regarding approval for proposal for ATTB write-off and material PLN	Minutes of work handover on used equipment (ATTB) dated 7 January 2025.	
kWh meters	157,772,719	157,772,719	157,772,719	DLI 6 (i) Achieved
<b>Total</b>	<b>157,772,719</b>	<b>157,772,719</b>	<b>157,772,719</b>	DLI 6 (ii) Achieved
<b>UIW P2B</b>	Letter No. 1348/LOG.01.03/C18000000/2021 dated 28 May 2021 regarding Proposal for UIW P2B ATTB Write-off	Letter No. 40/DK-PLN/2022 dated 5 April 2022 regarding approval for proposal for ATTB write-off and material PLN Unit	Disposed on 20 December 2023 (Biak), 15 January 2024 (Jayapura), 14 March 2024 (Manokwan), 13, 19, and 21 June 2024 (Sorong, Merauke and Nabire).	
Distribution material (incl. transformers, cables, kWh meter, poles, and etc)	1,452,319,280	1,452,319,280	877,419,045	DLI 6 (i) Achieved
<b>Total</b>	<b>1,452,319,280</b>	<b>1,452,319,280</b>	<b>877,419,045</b>	DLI 6 (ii) Partially achieved
<b>Total original value (IDR) of used PLN equipment, 2019 proposal for disposal inventory in KMP</b>	<b>13,559,718,426</b>	<b>13,559,718,426</b>	<b>11,359,835,312</b>	
<b>Percentage original value (IDR) of used PLN equipment, 2019 proposal for approval by MSOE or relevant authority in KMP</b>		<b>100.00%</b>		Achieved for DLI 6 Target 2022 (i), 2023 (i), 2024 (i), and 2025 (i) because 100% of the proposal for ATTB write-off and PLN Unit has been approved by BOD PLN on 31 January, 5 April, 22 November 2022 and 22 December 2023.
<b>Percentage original value (IDR) of used PLN equipment, 2019 proposal for safely disposed in KMP</b>			<b>83.776336%</b>	Partially Achieved for DLI 6 Target 2025 (ii) because 83.78% of 2019 ATTB inventory has been safely disposed by third party on 15 and 29 August 2022, 14 August 2023, December 2023 - June 2024, and 7 January 2025.

**Figure 15 : 2025 Inventory of Used Equipment For Disposal**

Until the Q1 of 2025, the proposal for the elimination of ATTB from UID/UIW has been submitted to the Head Office (DIV AKT) with a total proposed value of Rp. 13.6 billion (Distribution only) in 2021 the process is as shown in Table 10 above. The first DLI 6 target for material disposal is 90% of inventory used the equipment for disposal by the end-2019 approved by MSOE or relevant PLN authority and the second is 65% of the 2019 inventory safely disposed. Based on information from the DIV AKT status up to Q1 2025, the used materials warehouses in UIW P2B already took by PT. EMI (Energy Management Indonesia) in June 2024 for disposal process. In addition, based on

information from DIV MVA, used material kWh meter in UIW MMU will be done by 31 march 2025.

DLI target 6 (ii) 25 used material warehouses submit environmental documents and get approval from DLH by 2024. In 2020, 2 used material warehouses have submitted environmental documents (2 SPPL) and were approved by relevant Regulatory Agency but for activities that equipped with SPPL environmental documents not yet equipped with a warehouse checklist. In 2021 PLN will intensively coordinate to be able to speed up the process of issuing environmental documents that are confirmed and approved by the relevant Regulatory Agencies for SPPL environmental documents that must be accompanied by a warehouse checklist. Cumulatively, until the Q4 2024, 28 (twenty-eight) issuances of environmental documents in used material warehouses have SPPL/DPLH which have been submitted and approved by DLH and have been completed by a warehouse checklist. Table 13 shows warehouse environmental document achievements in UIW.

No	UIW dan UP3	Ijin Lingkungan 2019 – TW II 2024			Rencana 2024	
		Jumlah	Tipe Dokumen Lingkungan	Tanggal Terbit	Jumlah	Tipe Dokumen Lingkungan
1	Kantor Induk, G. Kantor Induk	1	DPLH	19-Jan-24	PLN: status 4 Jan 2023 update DPLH ditingkat DLH. Target selesai TW2 2023 sibangnya 2x, baru 1x	
	UP3 Kuala Kapuas, G. Kuala Kapuas	1	SPPL	07-Aug-22		
	UP3 Palangkaraya, G. Palangkaraya	1	SPPL	07-Aug-22		
	UP3 Barabai, G. ULP Kandungan	1	SPPL	07-Aug-22		
	UP3 Banjarbaru, G. ULP Banjarmasin	1	SPPL	07-Aug-22		
	UP3 Palangkaraya, G. ULP Kuala Kurun	1	SPPL	15-Jul-22		
	UP3 Banjarmasin, G. ULP Ahmad Yani	1	SPPL	04-Sep-23		
	<b>Sub-total Kalselteng</b>	<b>7</b>				
2	UP3 Samarinda, G. ULP Ulu	1	DPLH	06-Apr-21		
	UP3 Kaltara, G. ULP Tarakan	1	SPPL	05-Sep-19		
	UP3 Samarinda, G. ULP Kotabangun	1	DPLH	18-Aug-23		
	UP3 Samarinda, G. ULP Tenggarong	1	DPLH	18-Aug-23		
	<b>Sub-total Kaltim</b>	<b>4</b>				
3	UP3 Pontianak, G. Cemara	1	DPLH	02-Jul-21		
	UP3 Ketapang, G. Sampit	1	DPLH	13-Dec-21		
	UP3 Sanggau, G. Suak Payung	1	DPLH	13-Nov-13		
	UP3 Singkawang, G. Singkawang	1	DPLH	30-May-23		
	<b>Sub-total Kalbar</b>	<b>4</b>			<b>0</b>	
4	UP3 Ambon, G. Lateri	1	SPPL	11-May-20		
	UP3 Ternate, G. Ternate	1	SPPL	17-Nov-21		
	UP3 Tual, G. Tual	1	SPPL	04-Apr-24		
	UP3 Sofifi, G. Sofifi	1	SPPL	04-Apr-24		
	UP3 Masohi, G. Masohi	1	SPPL	03-Feb-22		
	UP3 Tobelo, G. Tobelo				1	SPPL
	UP3 Saumlaki, G. Saumlaki				1	Belum ada arahan
	<b>Sub-total Maluku &amp; Maluku Utara</b>	<b>5</b>			<b>2</b>	
5	UP3 Manokwari, G. Manokwari	1	SPPL	10-Sep-21		
	UP3 Sorong, G. Sorong	1	SPPL	11-Nov-21		
	UP3 Merauke, G. Merauke	1	SPPL	20-Jul-23		
	UP3 Biak, G. Biak	1	SPPL	27-Mar-24		
	UP3 Jayapura, G. Jayapura	1	SPPL	31-Jan-23		
	UP3 Timika, G. Timika	1	SPPL	06-Dec-23		
	UP3 Nabire, G. Nabire	1	SPPL	27-Mar-24		
	UP3 Wamena, G. Wamena	1	SPPL	27-Mar-24		
	<b>Sub-total Papua &amp; Papua Barat</b>	<b>8</b>			<b>0</b>	
	<b>Kumulatif Total</b>		<b>28</b>			<b>2</b>

Figure 16 : Warehouse Environmental Permit Achievements in 2025 RBL-ADB

The total achievement of 28 (twenty-eight) warehouses has environmental documents that have been submitted and approved by DLH. From the 2024 target, 25 warehouses have environmental documents.

DIV K3L has developed a used material warehouse checklist from manual to digital based on application and web in collaboration with the Zite Platform. In this application, the parent unit allows submitting the results of the warehouse checklist and sharing warehouse locations. As an evaluation function, the application has designed a multilevel monitoring and approval system according to the authority. Warehouses with SPPL environmental documents must comply with the checklist and will be evaluated twice a year (per semester). However, operational problems were still found in using the application so that the previous manual form was still used until the use of the application was running well.

FORM HOUSEKEEPING MATERIAL ATTB YANG MENGGUNAKAN LBS													
No.	Jumlah ATTB yang Menggunakan LBS (Foto, Rekapitulasi, dll)	Jumlah	Lokasi Penyimpanan			Fasilitas Penyimpanan							
			Nama Gudang	Koordinat	Luas Area (m <sup>2</sup> )	Tidak bercampur dgn material lainnya	Pemisahan tawar dan tawar material (K3S) dan/atau	Pemisahan kapasitor sesuai merk/tegangan	Balok (Foto)	Memiliki strap/penutup (tidak boleh rusak)	Balok (Foto)	Terdapat lokasi dan/atau lokasi	Alasada, pelek dan kerangka
						(ya/tidak)	(ya/tidak)	(ya/tidak)		(ya/tidak)	(ya/tidak)	(ya/tidak)	

Figure 17 : Housekeeping Checklist for Warehouses of Used Material (Existing)

Figure 18 : Warehouse management for App and Web-Based Used Material Warehouses

### 3.3.7. RBL DLI 7: Consumer Education

The definition of the indicator is holding consumer education workshops on safe and productive energy use which will be carried out by 1 UP3 each UIW in 2024 with a minimum participation of 30% women for each workshop. The development of training materials by PLN Pusdiklat was completed on 27 September 2021 and PLN Pusdiklat conveys that the workshop material will always be updated on the link provided by PLN Pusdiklat because educational material will change dynamically. Based on material references from ADB and the training material has been shared with UIW. The implementation of Training of Trainer (ToT) Batch 1 in Kalimantan and Batch 2 in Maluku-Papua have been carried out in August 2021 and followed by the implementation of Batch 3 for Kalimantan and Maluku-Papua to accommodate participants who were unable to attend the previous Batch in October 2021.

The workshop was held in Q4 2021 with the achievements of 5 UIWs at KMP realized 4 UIWs and target 29 UP3s realized 29 UP3s, Based on Regional independent calculation obtained that meet the requirements the achievement is 33 workshops according to the 2023 target of 34 workshops. Workshop with a total of participants in one UIW/UP3 > 50% worth 1,25 points, which is 16 units, and the remaining 17 units are worth 1 point for a total of 37 points. Until the Q4 of 2023, there were 29 workshops that met the requirements with 31,25 points earned. Most of the workshops were held at UIW Kalselteng and then at UIW Kalbar, UIW Kaltimra and UIW MMU. Cumulative points 97,5 for 2023 annual verification mission 2023. For Q3 2025, most of the UP3 conducted customer education, however they have done in this Q2 in 2025 and cumulative point as of Q4 2025 is 137,75 points.

Figure 19 : Implementation of Consumer Education Workshop As of Q4 2025

	Unit	Female	Male	Total	Female participation	Point	Pelaksanaan
<b>UID KALBAR</b>							<b>5</b>
<b>TOTAL UID KALBAR</b>		<b>410</b>	<b>106</b>	<b>516</b>			
<b>1</b>	<b>UP3 Pontianak</b>	<b>108</b>	<b>0</b>	<b>108</b>	<b>100%</b>	<b>1,25</b>	26 Mei 2024
	Aula UP3 Pontianak	108	0				
<b>2</b>	<b>UP3 Singkawang</b>	<b>97</b>	<b>72</b>	<b>169</b>	<b>57,40%</b>	<b>1,25</b>	
	SMKN 1 Teluk Kramat	45	58				7 Mei 2024
	Kantor UP3 Singkawang	38	-				26 Februari 2024
	Kelurahan Melayu	14	14				5 Februari 2024
<b>3</b>	<b>UP3 Sanggau</b>	<b>96</b>	<b>25</b>	<b>121</b>	<b>79,34%</b>	<b>1,25</b>	
	Aula UP3 Sanggau	95	0				18 Mei 2024
	Desa Selampung	1	25				16 Juli 2024
<b>4</b>	<b>UP3 Ketapang</b>	<b>109</b>	<b>9</b>	<b>118</b>	<b>92,37%</b>	<b>1,25</b>	
	Rumah Dinas Bank Kalbar	33	0				8 Juni 2024
	Aula PLN Ketapang	25	0				13 Juli 2024
	SMK N 1 Tumbang Titi	16	6				19 Agustus 2024
	Desa Kalinilam	35	3				10-Sep-24
<b>5</b>	<b>UP3 Mempawah</b>	<b>48</b>	<b>34</b>	<b>82</b>	<b>58,54%</b>		
	Wisma Candramidi Mempawah	48	34				5 Juni 2024
<b>UID KALSELTENG</b>							<b>6,25</b>
<b>TOTAL UID KALSELTENG</b>		<b>987</b>	<b>618</b>	<b>1605</b>			
<b>6</b>	<b>UP3 Banjarmasin</b>	<b>243</b>	<b>172</b>	<b>415</b>	<b>58,55%</b>	<b>1,25</b>	
	Kantor Kelurahan Sungai Bilu	9	26				08-Jan-24
	Kantor Desa Aluh Aluh Besar	12	18				28-Feb-24
	Kantor Kelurahan Sungai Bilu	10	32				24-Apr-24
	Raya	11	24				29-Apr-24
	Kantor Desa Kolam Kanan	12	2				25-Mar-24
	Keramat	18	7				20 Mei 2024
	Kelurahan Kemuning RT 15	27	-				25 Mei 2024
	Raya	29	-				25 Mei 2024
	Kantor Kelurahan Sungai Andai	61	3				28 Mei 2024
	Kantor Kelurahan Sungai Paring	5	27				30 Mei 2024
	Pelaihari, Kab. Tanah Laut	34	-				31 Mei 2024
	Kantor Kelurahan Alalak Utara	15	33				10-Jun-24
<b>7</b>	<b>UP3 Barabai</b>	<b>314</b>	<b>178</b>	<b>492</b>	<b>63,82%</b>	<b>1,25</b>	
	Kantor Kecamatan Uya	3	17				15-Jan-24
	Sungai Tengah	6	25				05-Mar-24
	Kec. Hatungun	19	18				05-Mar-24
	Selatan	16	14				05-Mar-24
	Tengah	6	14				07-Mar-24
	Kantor Desa Muning Tengah	6	12				08-Mar-24
	Kantor Desa Batu Bini	6	11				08-Mar-24
	Kantor Kecamatan Lokpaikat	12	22				19-Mar-24
	Kantor Desa Gumbil	8	9				08 Mei 2024
	Malingkung Kec. Tapin Utara	20	-				05-Jun-24
	Kantor Kecamatan Haur Gading	15	14				11-Jun-24
	Kantor ULP Paringin	21	-				12-Jun-24
	Utara	20	5				13-Jun-24
	Kantor Desa Wawai	25	5				19-Jun-24
	Kec. Binuang	24	1				20-Jun-24
	Kantor Desa Teluk Labak	15	1				21-Jun-24
	Kelurahan Sulingan, Kecamatan	31					21-Jun-24
	Majelis Ta'lim Desa Sidorejo Kec	61	10				21-Jun-24
<b>8</b>	<b>UP3 Kotabaru</b>	<b>74</b>	<b>37</b>	<b>111</b>	<b>66,67%</b>	<b>1,25</b>	
	SMKN 1 Kotabaru	36	14				26-Feb-24
	Batulicin	20	6				08-Mar-24
	SMKN 1 kintap	18	17				22-Mar-24
<b>9</b>	<b>UP3 Kuala Kapuas</b>	<b>212</b>	<b>126</b>	<b>338</b>	<b>62,72%</b>	<b>1,25</b>	
	SMA Negeri Sebangau	20	15				23-Feb-24
	Desa Dirung Bakung	10	18				05-Mar-24
	SMK Negeri Buntok	21	46				08-Mar-24
	Kantor Desa Didi	17	15				16 Mei 2024
	Masjid Darul Muttaqin Kapuas	40	-				10-Jun-24
	Seberang	23	10				11-Jun-24
	Desa Danau Ganting	58	1				16-Jul-24
	Aula Desa IPU Atas	23	21				31-Jul-24
<b>10</b>	<b>UP3 Palangka Raya</b>	<b>144</b>	<b>105</b>	<b>249</b>	<b>57,83%</b>	<b>1,25</b>	
	HOTEL AQUARIUS	6	27				07-Feb-24
	SMAN 2 PALANGKA RAYA	23	15				22-Feb-24
	Kantor Desa Tumbang Kuayan	26	30				04-Mar-24
	Kabupaten Gunung Mas	-	8				15-Mar-24
	Kantor PLN ULP Kuala Kurun	14	1				20-Mar-24
	SMAN 1 Kasongan	11	11				20-Mar-24
	Bangkirei	13	8				26-Apr-24
	Hilir	40	-				07-Jun-24
	Tumbang Anjir	11	5				27-Jun-24
<b>11</b>	<b>UP3 Pangkalan Bun</b>	<b>185</b>	<b>133</b>	<b>318</b>	<b>58,18%</b>		
	Lada	18	19				21 Mei 2024
	Univ Antakusuma	23	22				31 Mei 2024
	Kantor Desa Sungan Bakau	29	14				22 Mei 2024
	Kantor Kecamatan Kumai	11	5				29 Mei 2024
	Sungai Bundung Dan Desa	33	31				02-Apr-24
	Universitas Darwan Ali Sampit	52	30				06 Mei 2024
	MAN Lamandau	19	12				02 Mei 2024

UID KALTIMRA						6,25				
<b>TOTAL UID KALTIMRA</b>						<b>467</b>	<b>353</b>	<b>820</b>		
<b>12</b>	<b>UP3 Balikpapan</b>	<b>105</b>	<b>62</b>	<b>167</b>	<b>62,87%</b>	<b>1,25</b>				
	SMK Utama Al-Jabal Nur Sambo	28	43						22 Januari 2024	
	Desa Luan Grogot	-	-						7 Januari 2024	
	Desa Panajam	18	8						27 Februari 2024	
	Desa Bente Tualan	-	-						21 Februari 2024	
	DS SIDOREJO KECAMATAN PENA	59	11						29 Mei 2024	
<b>13</b>	<b>UP3 Berau</b>	<b>67</b>	<b>42</b>	<b>109</b>	<b>61,47%</b>	<b>1,25</b>				
	MALINAU HULU	5	6						3 Januari 2024	
	PUNAN SETARAP	-	-						15 Januari 2024	
	MALINAU HILIR	-	-						2 Februari 2024	
	BATU KAJANG	-	-						6 Mei 2024	
	BELAYAN	5	8						04-Apr-24	
	DINAS PUPR	32	-						27 Juni 2024	
	MALINAU SEBERANG	25	15						10 Juli 2024	
	KORAMIL MALINAU	0	13						12 Agustus 2024	
<b>14</b>	<b>UP3 Bontang</b>	<b>103</b>	<b>89</b>	<b>192</b>	<b>53,65%</b>	<b>1,25</b>				
	Kelurahan Api-Api	11	26						3 Januari 2024	
	Kelurahan Api-Api	14	12						15 Januari 2024	
	Kelurahan Api-Api	3	1						2 Februari 2024	
	Kelurahan Api-Api	38	34						6 Mei 2024	
	KECAMATAN SANGATTA SELATA	37	16						04-Apr-24	
<b>15</b>	<b>UP3 Samarinda</b>	<b>66</b>	<b>65</b>	<b>131</b>	<b>50,38%</b>	<b>1,25</b>				
	DS KELUMPANG	7	15						17-Apr-24	
	DS UJOH BILANG	23	18						25 Januari 2024	
	DS MUARA JAWAQ	8	17						21 Februari 2024	
	DS SALO PALAI	28	15						19 Februari 2024	
<b>16</b>	<b>UP3 Kaltara</b>	<b>126</b>	<b>95</b>	<b>221</b>	<b>57,01%</b>	<b>1,25</b>				
	KECAMATAN NUNUKAN	9	19						22 Januari 2024	
	KECAMATAN SEBATIK INDUK	35	18						7 Maret 2024	
	KECAMATAN SEBATIK BARAT	16	22						7 Maret 2024	
	KECAMATAN TANJUNG SELOR	41	25						21 Mei 2024	
	KECAMATAN TARAKAN UTARA	25	11						11 Juni 2024	
<b>17</b>	<b>UP3 Nusantara</b>	<b>18</b>	<b>16</b>	<b>34</b>	<b>52,94%</b>					
	DS PEMALUAN	18	16						5 Februari 2024	
<b>UIW MMU</b>						<b>8,5</b>				
<b>TOTAL UIW MMU</b>						<b>851</b>	<b>599</b>	<b>1450</b>		
<b>18</b>	<b>UP3 Ambon</b>	<b>113</b>	<b>67</b>	<b>180</b>	<b>62,78%</b>	<b>1,25</b>				
	Nusa Ela	16	11						13/05/2024	
	Morela	4	18						05/06/2024	
	Haya, Humual Belakang	5	12						18/03/2024	
	Sanahuni, Humual Belakang	51	24						19/03/2024	
	SMAN 13 Ambon	37	2						29/02/2024	
<b>19</b>	<b>UP3 Masohi</b>	<b>77</b>	<b>48</b>	<b>125</b>	<b>61,60%</b>	<b>1,25</b>				
	Desa Tobo	31	13						28/05/2024	
	Desa Osong	44	10						29/05/2024	
	Dusun Kaliwe	2	25						20/06/2024	
<b>20</b>	<b>UP3 Tual</b>	<b>152</b>	<b>103</b>	<b>255</b>	<b>59,61%</b>	<b>1,25</b>				
	Desa Siwalima	57	61						23-Apr-24	
	Desa Tayando Taam	65	32						01-Apr-24	
	Desa Ohoi Wakol	30	10						20 Mei 2024	
<b>21</b>	<b>UP3 Saumlaki</b>	<b>161</b>	<b>133</b>	<b>294</b>	<b>54,76%</b>	<b>1,25</b>				
	SMKN 6 Kepulauan Tanimbar	12	26						16/02/2024	
	Desa Manoha	21	28						21/06/2024	
	Desa Ilwaki	11	14						09/10/2024	
	SMAN 13 Kepulauan Tanimbar	43	17						11/01/2024	
	SMKN 12 Kepulauan Tanimbar	41	17						11/08/2024	
	SMAN 5 Kepulauan Tanimbar	33	31						22/11/2024	
<b>22</b>	<b>UP3 Ternate</b>	<b>246</b>	<b>130</b>	<b>376</b>	<b>65,43%</b>	<b>1,25</b>				
	Desa Alam Pelita	34	22						18/03/2024	
	Desa Soa Sangaji	21	12						18/03/2024	
	SMK MISBAHUL AULAD	83	38						05/08/2024	
	Mahasiswi Unkhair	12	-						06/06/2024	
	Desa Batutaga	30	12						27/08/2024	
	Desa Prapakanda	16	11						27/08/2024	
	Desa Sawanakar	15	12						28/08/2024	
	Desa Toin	35	23						28/08/2024	
<b>23</b>	<b>UP3 Sofifi</b>	<b>57</b>	<b>54</b>	<b>111</b>	<b>51,35%</b>	<b>1,25</b>				
	Desa Nusliko	26	20						27/06/2024	
	SMK 5 Tabadamai	11	24						26/04/2024	
	Desa Sangaji	20	10						28/06/2024	
<b>24</b>	<b>UP3 Tobelo</b>	<b>45</b>	<b>64</b>	<b>109</b>	<b>41,28%</b>	<b>1</b>				
	Gorua Utara	-	10						17/01/2024	
	PILOWO	12	10						17/01/2024	
	FALILA	6	13						16/01/2024	
	MA AL KHAIRAT	20	21						29/05/2024	
	TOGOLI	7	20						05/07/2024	

UIW P2B						9,75
TOTAL UIW P2B		649	398	1047		
<b>25</b>	<b>UP3 Jayapura</b>	<b>77</b>	<b>94</b>	<b>171</b>	<b>45,03%</b>	<b>1</b>
	SMA Trikora Mandala	15	16			
	Aula Hena Taje	18	0			
	Kantor ULP Arso	7	13			
	Universitas Cenderawasih	22	65			
	ULP Sentani	15	0			
<b>26</b>	<b>UP3 Merauke</b>	<b>114</b>	<b>50</b>	<b>164</b>	<b>69,51%</b>	<b>1,25</b>
	Sosialisasi Dengan PIKK	40	11			
	SMK Negeri 3 Merauke	36	20			
	RSUD Mapi	32	10			
	Aula Animha Sai	20	0			
	SMA N 1 EDERA	14	5			
	SMA N 1 OBAA	21	17			
	SMA 1 Tanah Miring	27	18			
<b>27</b>	<b>UP3 Biak</b>	<b>92</b>	<b>13</b>	<b>105</b>	<b>87,62%</b>	<b>1,25</b>
	Aula UP3 Biak	44	0			
	Kampus YAPIS Biak	48	13			
<b>28</b>	<b>UP3 Timika</b>	<b>69</b>	<b>57</b>	<b>126</b>	<b>54,76%</b>	<b>1,25</b>
	Kampung Pepera	12	21			
	Kampung Woutu Brasa	10	16			
	Kampung Buetkawar dan Katew	24	20			
	Aula UP3 Timika (PIKK)	23	0			
<b>29</b>	<b>UP3 Nabire</b>	<b>67</b>	<b>38</b>	<b>105</b>	<b>63,81%</b>	<b>1,25</b>
	Kp Wami	31	14			
	Kp Mora	36	24			
<b>30</b>	<b>UP3 Wamena</b>	<b>86</b>	<b>80</b>	<b>166</b>	<b>51,81%</b>	<b>1,25</b>
	SMA Negeri 1 Wamena	86	80			
<b>31</b>	<b>UP3 Sorong</b>	<b>54</b>	<b>48</b>	<b>102</b>	<b>52,94%</b>	<b>1,25</b>
	SMA Averos Sorong	42	22			
	Aula PT PLN (Persero) UP3 Sorong	12	26			
<b>32</b>	<b>UP3 Manokwari</b>	<b>90</b>	<b>18</b>	<b>108</b>	<b>83,33%</b>	<b>1,25</b>
	Kelurahan Manokwari Barat	20	18			
	Pasir Putih	39	0			
	Kalawai Mart	31	0			
<b>2024 Target</b>		<b>total point in IV 2024</b>				<b>35,75</b>
<b>Target</b>		<b>2020, 2021, 2022, 2023 and 2024)</b>				<b>136,75</b>

In addition, the implementation of the workshop will be combined with the commercial socialization program at UIW and UP3 while still taking into account the conditions for the recognition of the workshop by IVA/ADB and the ongoing pandemic conditions. So that the implementation of the workshop can be done via online.

### 3.3.8. RBL DLI 8: Integrating E-Procurement and SAP Systems

The E-Procurement & SAP system has been integrated in 2019. In March 2021 DIVSTI has held the latest socialization of the E-Procurement feature related to this DLI to procurement officials at UIW. DLI 8 target 2024 is 80% of contracts in financial value executed by UIW and listed on E-Procurement and SAP. DLI 8 achievements will be calculated at the end of the year. However, based on Q1 2024 achievement of 57.77%, a complete improvement and strategy for inputting contract information is needed in the E-Procurement and SAP at UIW. DIV MRP in collaboration with the Regional Division will make instructions for inputting contract procurement data from the beginning to the end of the process in order to increase the percentage of data matching on the E-Proc. and SAP. Based on DIV MRP confirmation for the position of the Q4 2024 for the achievement of contract data integration in KMP is 85.78%.

**Figure 20 : Eproc + SAP Procurement Contract integration data at KMP As of Q4 2024**

Unit	SAP Spend Transaction (Rp)												
	JAN	S.D. FEB	S.D. MAR	S.D. APR	S.D. MEI	S.D. JUNI	S.D. JUL	S.D. AGU	S.D. SEP	S.D.OKT	S.D.NOV	S.D.DEC	
UID Kalbar	7,545,181,348	32,570,951,213	104,163,145,483	221,125,757,719	269,826,030,986	292,238,349,817	352,102,691,531	368,763,349,771	374,690,082,718	411,313,550,870	431,995,999,203	466,347,809,144	
UID Kalselteng	42,060,289,017	81,061,830,286	150,931,333,588	217,722,377,795	259,724,995,300	323,466,615,445	404,559,739,196	437,890,800,843	471,908,880,812	518,364,279,042	573,920,698,207	638,825,330,470	
UID Kaltimra	51,386,640,578	157,346,794,309	241,400,302,759	324,491,261,547	379,409,740,825	437,384,082,793	464,457,130,627	538,976,072,355	581,155,792,803	651,415,053,307	750,901,511,046	872,360,254,903	
UIW Maluku & Maluku Utara	4,841,500,858	17,350,443,510	41,992,102,552	56,002,443,757	75,034,194,373	90,831,491,668	124,764,077,927	171,051,054,688	203,494,655,482	261,035,672,881	283,140,188,727	288,334,889,471	
UIW Papua & Papua Barat	3,939,545,541	17,282,022,766	54,699,525,600	73,012,548,643	81,971,521,681	89,639,609,898	308,395,483,303	370,440,633,191	425,998,395,059	452,993,640,494	464,196,207,225	469,356,953,458	
<b>Grand Total</b>	<b>109,773,157,342</b>	<b>306,612,042,884</b>	<b>593,186,409,982</b>	<b>892,354,389,461</b>	<b>1,065,966,483,165</b>	<b>1,233,560,149,621</b>	<b>1,654,279,122,584</b>	<b>1,887,121,910,848</b>	<b>2,057,247,766,874</b>	<b>2,295,122,156,594</b>	<b>2,504,154,604,408</b>	<b>2,735,225,237,446</b>	
Unit	Linked Spend Transaction (Rp)												
	JAN	S.D. FEB	S.D. MAR	S.D. APR	S.D. MEI	S.D. JUNI	S.D. JUL	S.D. AGU	S.D. SEP	S.D.OKT	S.D.NOV	S.D.DEC	
UID Kalbar	4,969,736,811	25,943,600,566	87,575,973,870	202,235,700,796	247,058,275,297	267,246,452,031	318,629,646,254	331,359,748,749	335,342,635,605	364,429,411,924	378,413,447,945	400,999,264,229	
UID Kalselteng	34,573,585,784	69,855,067,557	127,572,840,315	188,369,816,169	223,173,270,308	284,963,770,136	352,197,917,892	375,426,601,432	403,245,429,441	440,627,962,814	481,455,881,125	530,757,328,107	
UID Kaltimra	43,694,786,201	134,297,492,238	204,490,816,061	281,297,592,379	331,077,012,262	383,834,502,920	409,271,058,825	477,922,010,778	519,222,309,518	581,182,647,495	664,921,698,634	765,748,750,209	
UIW Maluku & Maluku Utara	4,764,381,250	13,595,262,427	36,553,249,356	49,060,668,404	66,749,117,925	77,928,866,040	109,466,371,813	148,671,343,725	167,712,959,849	220,977,152,761	241,048,468,115	245,164,916,786	
UIW Papua & Papua Barat	3,484,384,661	10,514,362,091	44,283,824,229	62,249,362,087	68,758,074,695	76,247,660,560	272,821,139,333	315,319,286,006	365,561,804,954	389,476,418,637	398,633,312,491	403,594,684,470	
<b>Grand Total</b>	<b>91,086,874,687</b>	<b>254,205,784,879</b>	<b>500,476,793,831</b>	<b>783,213,139,835</b>	<b>936,815,750,487</b>	<b>1,090,221,251,687</b>	<b>1,462,386,134,117</b>	<b>1,648,698,990,690</b>	<b>1,791,085,139,367</b>	<b>1,996,693,593,631</b>	<b>2,164,472,808,310</b>	<b>2,346,264,943,801</b>	
Unit	Realisasi RBLDLI KMP (%)												
	JAN	S.D. FEB	S.D. MAR	S.D. APR	S.D. MEI	S.D. JUNI	S.D. JUL	S.D. AGU	S.D. SEP	S.D.OKT	S.D.NOV	S.D.DEC	Target 2024 (%)
UID Kalbar	60.56%	79.65%	84.08%	91.46%	91.56%	91.45%	90.49%	89.86%	89.50%	88.60%	87.60%	85.99%	80.00%
UID Kalselteng	82.20%	86.18%	84.52%	86.52%	85.93%	88.10%	87.06%	85.74%	85.45%	85.00%	83.89%	83.08%	80.00%
UID Kaltimra	85.03%	85.35%	84.71%	86.69%	87.26%	87.76%	88.12%	88.67%	89.34%	89.22%	88.55%	87.78%	80.00%
UIW Maluku & Maluku Utara	98.41%	78.36%	87.05%	87.60%	88.96%	85.79%	87.74%	86.92%	82.42%	84.65%	85.13%	85.03%	80.00%
UIW Papua & Papua Barat	88.45%	60.84%	80.96%	85.26%	83.88%	85.06%	88.46%	85.12%	85.81%	85.98%	85.88%	85.99%	80.00%
<b>Grand Total</b>	<b>82.98%</b>	<b>83.18%</b>	<b>84.37%</b>	<b>87.77%</b>	<b>87.88%</b>	<b>88.38%</b>	<b>88.40%</b>	<b>87.37%</b>	<b>87.06%</b>	<b>87.00%</b>	<b>86.44%</b>	<b>85.78%</b>	<b>80.00%</b>

## 4. Non-Disbursement Linked Indicators

### 4.1. RBL Non-DLI 1: Improved Time Use

The non-DLI target is optimizing the use of time in activities after getting access to electricity for male and female customers. The formation of the Advisory Team has issued a Team Decree with No. 0092.K/DIR/2022 concerning the Formation of the Assistance Team for the Implementation of the Grant Socio-Economic and Gender Impact Evaluation in Maluku Papua on 15 March 2022, namely the recommendation of the mentoring team are as follows:

**Table 4 :Proposal Draft of the Socio-economic Assessment Assistance Team**

SUSUNAN KEANGGOTAAN TIM PENDAMPING PELAKSANAAN GRANT SOCIO-ECONOMIC AND GENDER IMPACT EVALUATION DI MALUKU PAPUA		
1.	Ketua EVP Perencanaan dan Pengendalian Regional Sulawesi, Maluku, Papua dan Nusa Tenggara	
2.	Wakil Ketua	
a.	VP Manajemen Keuangan Regional Sulawesi, Maluku, Papua dan Nusa Tenggara	DIV RMP
b.	VP Pengelolaan Aset Distribusi Regional Sulawesi, Maluku, Papua dan Nusa Tenggara	DIV RMD
3.	Anggota	
a.	VP Pengembangan dan Standarisasi Proses Administrasi Perencanaan dan Enjiniring	DIV MRE
b.	VP CSR	DIV KOM
c.	VP Hubungan Investor, Instiusional dan GCG	SET PER
d.	VP Manajemen Keuangan Regional Sumatera Kalimantan	DIV RSP
e.	VP Pengamanan Pendapatan Regional Sulawesi, Maluku, Papua dan Nusa Tenggara	DIV RMR
f.	VP Administrasi Pinjaman dan Hibah Luar Negeri	DIV RKO
g.	Senior Manager Perencanaan	UIW MMU
h.	Senior Manager Perencanaan	UIP2B
i.	Senior Manager Niaga & Pelayanan Pelanggan	UIW MMU
j.	Senior Manager Niaga & Pelayanan Pelanggan	UIP2B

ADB has hired international consultants from Milan University, which are Giovanna d'Adda and Jacopo Bonan. PLN and consultants together with ADB have held several discussions related to data needs for assessment activities and PLN has sent the required data, such as:

- a. Electrification roll-out in UIW MMU and UIW P2B from 2022-2025.
- b. Timeline of consulting local surveyor

**Table 5 : Timeline of consulting local surveyor**

Submission Method Proposal Evaluation Method		One Envelope Technical Evaluation and price negotiation															
NO	ACTIVITIES	PLAN DATE	1st Month				2nd Month				3rd Month						
			W1	W2	W3	W4	W1	W2	W3	W4	W1	W2	W3	W4			
1	Request of Procurement (User to Procurement Division) include Terms of Reference and Budget Estimation		■														
2	Preparation of Tender Document			■	■												
3	Preparation of Owner Estimate			■	■												
4	Invitation Letter for Submission Proposal				■												
5	Pre Bid Conference					■											
6	Minutes of Proposal Document's Submission					■	■	■									
7	Minutes of Technical and Administration Evaluation							■									
8	Invitation Letter of Clarification and Negotiation Meeting								■								
9	Minutes of Clarification and Negotiation Result									■							
10	Procurement Implementation Report										■						
11	Request for Approval Appointment Letter (EVP Procurement Division to EVP User)											■					
12	Approval Appointment Letter (EVP User to EVP Procurement)												■				
13	Appointment Letter (EVP User to Consultant)													■			
14	Contract Signing between User and Consultant														■		

- c. Budgeting of Surveyor Consultants (RAB) with a survey plan to 100 HH in MMU and 100 HH in P2B (adjusted to the budget because the survey cost is quite large)
- d. TOR Electrification Impact Evaluation consultancy services in Maluku and Papua
- e. Supporting materials such as training materials to the public on electricity productive use.

The procurement plan for the national surveyor will be finalized by the MRE Division, the current progress of the RMP Division (PLN) is waiting for recommendations from the ADB regarding recommended universities (for surveyor). After getting recommendations from ADB, RMP Division will send an official letter equipped with TOR and RAB to the MRE division for procurement implementation.

#### 4.2. RBL Non-DLI 2

At least one pilot community-based training on solar PV maintenance delivered with minimum 30% female participation (2020-2022).

0 Pilot community training and training materials from the basic maintenance of PLTS have been prepared by PLN Pusklat and is expected to be conducted in 2025.

#### 4.3. RBL Non-DLI 3

2024 social impact report of electrification published by middle of 2025. Currently PLN is preparing the 2025 social impact report which will be part of the PLN sustainability report and based on the aide memoire for the 2024 interim review mission. The report is targeted to be completed and submitted to the ADB for review on March 31, 2026.

## 5. Grant Implementation

### 5.1. Grant JFPR (Japan Fund for Poverty Reduction)

a. **Target 1.** An additional 16,000 poor households will receive PLN electricity by 2024, with results disaggregated by male/female-headed households. Currently, the mechanism for budgeting and recording assets is being pursued at PLN. PLN has no experience in using grants using Regional operating budgets and therefore needs elaborate measures from several division. PLN has held a meeting with related divisions (DIVANG, DIV PBH, DIV AKT, and DIV Regional) where a solution was obtained for the Determination of the Budget Ceiling to be issued by the Regional based on the availability of liquid grants in the PLN escrow account. "FIX". The 1<sup>st</sup> batch proposal for the JFPR Grant Implementation was accepted on December 2023 and based on the proposal, internal discussion regarding the potential absorption of possible JFPR grants, namely In-house wiring and Low Voltage Poles Expansion is currently in place.

b. **Target 2:**

(i) An e-module was developed and two trainer-training sessions on conducting community workshops for the safe and productive use of energy were conducted with participation by at least 58 PLN staff. ADB provided input regarding material from the PLN Pusdiklat on September 27, 2021. The PLN Pusdiklat held a Training on Trainer for PLN employees who had been proposed by UIW into 3 batches. From Batch 1 and Batch 2 (August 2021), and Batch 3 (October 2021), there were a total of 68 participants with a total of 28 female participants. The plan is to complete the shortage of trainers due to moving and retiring, so every UIW this year will start applying for ToT training again. Currently, those who have conducted the ToT again are UIW Kalselteng, UIW MMU, and UIW P2B at the end of July and early August 2022. In the Instructor Training (ToT) on June 30 at Udiklat Banjarbaru, UIW Kalselteng and all UP3s participated. Meanwhile, the instructor training on 1-3 August 2022 at Udiklat Makassar was attended by UIW with only one staff in charge of holding a workshop in 2021, namely from: UIW MMU office and from 3 UP3 (Masohi, Manokwari and Timika). For UP3 Saumlaki, the proposed participants for the 2022 ToT have not been attended so the trainer for consumer education only has one employee. The total participants who took part in and passed the 2022 ToT for UIW

Kalselteng, UIW MMU, and UIW P2B were 73 male employees and 16 female employees.

(ii) Culturally sensitive materials (eg language and literacy, among others) for safe and productive use of energy. Culturally sensitive materials (eg language and literacy, among others) for safe and productive energy use can be developed by each of the 29 UP3 offices for community education workshops. Currently, UIWs who have delivered are UIW West Kalimantan, UIW Kalselteng, UIW Kaltimra, and UIW P2B. The UIW delivered at the end of April 2022. As for the UP3 at UIW MMU that have delivered consumer education materials with the addition of culturally sensitive material on the DLI 7 evidence link, 3 out of 7 UP3s in September 2022. The UP3s are UP3 Tual, UP3 Saumlaki, and UP3 Ternate.

- c. **Target 3.** A baseline socio-economic and gender assessment carried out in 2021 and a follow-up socio-economic and gender impact evaluation with input from an expert working group. PLN and ADB have agreed that ADB will employ a team of international individual consultants in addition to the grant and PLN will employ a national survey company. For the preparation of the focal person working group, a working group was formed from the relevant divisions at PLN Central and UIW in Maluku – Papua. Formation of the Advisory Team has issued a Team Decree with No. 0092.K/DIR/2022 concerning the Establishment of a Assistance Team for the Implementation of the Grant Socio-Economic and Gender Impact Evaluation in Maluku Papua on 15 March 2022. ADB has hired international consultants from Milan University, which are Giovanna d’Adda and Jacopo Bonan. PLN and consultants together with ADB have held several discussions related to data needs for assessment activities and PLN has sent the required data. The procurement plan for the national surveyor will be finalized by the MRE Division, the current progress of the RMP Division (PLN) is waiting for recommendations from the ADB regarding recommended universities (for surveyor). The local surveyor procurement process is estimated to take 3 months.

## 5.2. Grant ACEF (Asian Clean Energy Fund)

### a. **Target 1:**

(i) Additional power generation from solar PVs (<10 MW) increased by an additional 4,020 MWh annually by 2024. (2019 baseline 0 MWh).

(ii) 17,500 HHs have access to PLN electricity from improved PLTS by 2024. (2019 baseline 0 HHs).

Achievement of the implementation of the ACEF grant Target 1 was not achieved because there was no PLTS that had been upgraded to remote monitoring and the hybrid system with EMS produced kWh of production.

### b. **Target 2:**

(i) 10 PLN PLTS upgraded and made operational with remote monitoring by 2024. (2019 baseline 0 PLTS upgraded).

(ii) 10 PLN PLTS upgraded and made operational with hybridization utilizing energy management systems by 2024. (2019 baseline 0 PLTS upgraded).

PLN will upgrade 14 PLTS (3 from UIW Kalbar: Limbung Island, Temajuk, Siding; 2 from UIW Kaltimra: Sebatik, Derawan; 2 from UIW MMU: Tior Island, Daruba, 7 from UIW P2B: off-grid Beo, off-grid Bianci, Arborek, Saonek, Oksibil, Mansinam, Dogiyai) to include remote monitoring and hybridization using energy management system. Construction of one PLTS pilot upgrade in Derawan will be conducted from H1 2024 for COD in December 2024, while another 13 PLTS upgrades will be completed by October 2025. Power generation expected from 14 PLTS upgrades is 3.596 MWh.

### c. **Target 3.** One pilot community training conducted on basic PLTS maintenance where remote monitoring is used with at least 30% women's participation by 2024. (2019 baseline 0 community PLTS maintenance trainings).

Based on the timeline for the procurement of PLTS supporting consultants in Kalimantan and Maluku - Papua, the possible implementation may start in 2023. So that the achievement of the 3 targets in the ACEF grant will be implemented no later than 2025. The current obstacle is budget changes that have not been contracted will be accommodated in the RKAP 2023 for the year 2022 RKAP has been close.

Figure 21 : Timeline of Procurement of PV mini-grid Technical Consultants

### Timeline of ACEF Grant Implementation

No	Milestone	Plan for 1 Pilot Site	Plan for 9 Remaining Sites
1	Budget approval	Jun-2023	
2	Start of procurement for consultancy services	Oct 2023	
3	End of procurement for consultancy services	February 2024	
4	Start of consultancy services	1 March 2024	
5	Finalized design for PLTS upgrade	30 June 2024	
6	Finalized bidding document for PLTS upgrade	30 June 2024	
7	Start of procurement for construction	July 2024	
8	End of procurement for construction	Dec 2024	
9	Start of construction	Dec 2024	Jul 2025
10	Commercial operation date	July 2025	Dec 2025
11	ToT of community-based on basic PLTS maintenance	Oct 2025	
12	Pilot community-based training on basic PLTS maintenance	Oct – Dec 2025	
13	End of consultancy services	Dec 2025	

## 6. Program Action Plan (PAP) Implementation Programs

No. PAP		Description DLI	Achievement by Q4 2025	Responsible Division
<p>Plan and finalize the selection of locations and components for the strengthening and expansion of the distribution system, and criteria for sequencing related interventions under the program. For Maluku- Papua, take into consideration the results from the least cost electrification study conducted in 2017-2018, any further geospatial analyses, and ongoing efforts on cold storage chain development</p>	1 (i)	Annual plan established for expansion of distribution system and renewable energy development	Partially completed for H1 2025. Out of the four types of evidence requested, IVA has verified that: - KKP evidence is adequate from all 5 UIW/UIDs. - There is no further communication with the government regarding M-LIN program as it has been cancelled, but PLN continues to meet the cold storage electrification individual request. However, some evidence to prove this are missing. - PLN confirmed that they are not considering the geospatial least cost planning study for internal planning since it is considered not up to date anymore and instead, PLN rural electrification will continue using the data that PLN have developed. - SKAI & SKKI evidence are adequate, except for SKKI from UID Kaltimra.	DIV RSD
	1 (ii)	Technical designs prepared for distribution lines expansion and renewable energy installation	Partially completed for H1 2025. IVA has verified the KKP sample and the project-level supporting document sample which contain technical design, cost estimate, and bill of quantity for distribution expansion and renewable project. Only UID Kalselteng has sufficient evidence while the remaining UID/UIWs still have	DIV RSD
	1 (iii)	Safety training conducted for PLN staff and contractors prior/during construction	Partially completed for H1 2025. IVA has verified evidence of safety briefing evidence conducted for contractors from all UID/UIWs in H1 2025, except for UID Kaltimra and UIW MMU. IVA has also verified evidence of safety training conducted for PLN staff from all UID/UIWs in H1 2025, except for UID Kalbar, UID Kaltimra, and UIW MMU.	DIV ODS / DIV ODM
	1 (vi)	Completion report/record prepared	Completed for H1 2025. IVA has verified BASTP and investment realization report evidence in H1 2025 from all 5 UID/UIWs.	DIV RSD
Develop guidance to regulate voltage at feeder lines including the use of auto/step voltage regulators for MV lines.	2 (i)	Review report of current voltage regulation measures for distribution lines including application for auto/step voltage regulators for MV lines.	(i) Completed in 2024 interim verification	PUSLITBANG

	<b>2 (ii)</b>	Technical guidance developed for auto/step voltage regulators	(ii) Completed in 2024 interim verification	PUSLITBANG
Conduct a study with draft standards for single-phase distribution systems, including consideration of SWER.	<b>3 (i)</b>	Study conducted for review of current three-phase distribution system and single-phase distribution system.	Partially completed. Upon confirmation during virtual meeting, Puslitbang submitted a revised report to DIV RSD on 2-Jul-2025 and DIV RSD sent it back to Puslitbang for another revision on 8 Aug-2025. Hence the report is not completed yet as of 30-Jun-2025	PUSLITBANG
	<b>3 (ii)</b>	If applicable, technical recommendation submitted to BOD for SPL and/or SWER	Not completed. Puslitbang has not finished the revised report yet. DIV RSD plans to evaluate the study and make a technical recommendation to BOD, roughly one month after the finalized report.	PUSLITBANG
Report on implementation status of poverty-focused grant on (i) household connections for the poor, (ii) PLN trainings and community materials on safe and productive energy use, and (iii) impact assessments*.	<b>4 (i)</b>	Report on grant achievements against indicative targets	(i) Completed, as all sub-indicators are completed. (a) Completed in 2021 Interim verification. (b) Completed. The target of e-module development was achieved in 2021 Annual verification. The ToT requirement was met in 2023 Interim verification. (c) Completed. Based on submitted evidence and field verification findings, IVA verifies that PLN has used culturally sensitive materials for the workshops. UIW and UP3 units customized the material developed by Puskdiklat and adding local content and this have been confirmed by respondents interviewed by IVA.	DIV RSD DIV PPR DIV KEU
	<b>4 (ii)</b>	Conduct recruitment using international competitive bidding for a firm to conduct a socio-economic and gender baseline study	(ii) Not completed This indicator would never be completed because, as reported in 2021 AV report, due to procurement constraint from PP 25/2021, ADB procures the international consultant and PLN would only procure the national consultant. PLN procures the national consultant in 2023 through direct appointment	DIV RSD DIV PPR
	<b>4 (iii)</b>	Conduct a socio-economic and gender impact assessment	(iii) Partially completed The final baseline report is expected to be delivered in last week of June 2025. Endline survey would be conducted in 2025 and report to be delivered in Q4 2025.	DIV RSD DIV PPR

Report on grant implementation status for ACEF on (i) additional power generation from community scale solar PLTS and connection to households, (ii) piloting of remote monitoring projects, (iii) piloting of hybrid units using EMS, and (iv) community training on solar PV maintenance where remote monitoring is used, ensuring female participation in such training*.	<b>5 (i)</b>	Report on grant achievements against indicative target: Power generation	(i) Partially completed. Target 1a: Not completed. There is no achievement yet in this verification, since the energy production from eligible PLTS in H1 2025 (1,036,396.80 kWh) is lower than the 2019 baseline (2,332,050.80 kWh). Target 1b: Partially completed. The verified achievement for H1 2025 is 612 HHs, calculated from the estimated HHs connected in H1 2025 (912 HHs) subtracted with the 2019 baseline (327 HHs). Based on the two items above, IVA considers this indicator as partially completed.	DIV RSK DIV LISDES
	<b>5 (ii)</b>	10 PLN PLTS upgraded and operational with remote monitoring	Not completed. PLN is still in the budget approval stage for the 1 pilot PLTS and in the design finalization stage for the remaining 9 PLTS upgrade. Hence there is no improved PLTS from PLN yet	DIV RSK DIV LDS
	<b>5 (iii)</b>	10 PLN PLTS upgraded and operational with hybridization utilizing energy management systems	Not completed. PLN is still in the budget approval stage for the 1 pilot PLTS and in the design finalization stage for the remaining 9 PLTS upgrade. Hence there is no improved PLTS from PLN yet.	DIV RSK DIV LDS
	<b>5 (iv)</b>	At least one pilot community training delivered on basic PLTS maintenance where remote monitoring is used with at least 30% women's participation	(iv) Not completed. As per the latest timeline submitted by PLN, the pilot community training is scheduled in Mar-2027 following the COD of pilot PLTS in Jan-2027. Note that the initial training module has been completed in Sep-2021. Revisions on the technical materials were added by the technical consultant as signified by the evidence submitted in this verification, but the materials will be updated again later following the implementation of pilot PLTS to be ready as module for future scale up of community training.	DIV RSK DIV LDS
Strengthen PLN's monitoring and evaluation systems	<b>6 (i)</b>	Regular quarterly reviews of RBL program implementation	(i) Partially completed for H1 2025 . For Q1 2025, IVA has verified coordination meeting evidence between DIV RSD and 5 UID/UIWs in KMP on 5-Mar-2025 to discuss the preparation of APFS. For Q2 2025, there was no coordination meeting held between PLN HQ and any UID/UIWs in KMP.	DIV KEU
	<b>6 (ii)</b>	See 7(i) under Gender	Completed in 2021 interim verification. PLN has finished the interface module and is able to pull out DTKS dataset from AP2T system with disaggregated gender of household-head data.	DIV TEK

Enhance PLN's capacity to mainstream gender into its work.	7 (i)	An interface module between PLN's AP2T and National TNP2K database developed and applied to enable identification and tracking of female/male headed households.	(i) Completed in Interim 2021.	DIV PPR
	7 (ii)	Training module on livelihood opportunities for women included in consumer education trainings on safe and productive energy use.	(ii) Completed in Interim 2021.	PUSDIKLAT
	7 (iii)	See 4 (iii) on impact assessment, including impact on gender	(iii) On progress (timeframe: by 2025) The final baseline report has been delivered in July 2025 and ADB accepted the report on 20 August 2025.	DIV PPR
	7 (iv)	See 5 (iv) on pilot community training on basic PLTS maintenance.	(iv) On progress. (timeframe: by 2025) The initial training module has been completed by Pusklat. Pilot community training is scheduled for March 2027.	DIV RSK DIV LISDES
Automated production of consolidated financial statements with variance reporting against budget.	8 (i)	Consolidated quarterly financial statements produced automatically by MAXICO.	<b>(i) Completed in 2021 annual verification. This indicator is a one-time completion target. IVA has received evidence of the finished improvement for automating the process in creating consolidated financial statement. Evidence on how the improvement caters for the user needs and that it was utilized for the 2021 financial statement has been provided as well.</b>	DIV AKT
	8 (ii)	E-Budget implemented in the program target regions.	<b>(ii) Completed in 2020 annual verification. This indicator is a one-time completion target. IVA has received evidence that all UIW in KMP has already implemented E-Budget.</b>	DIV ANG
	8 (iii)	Staff in all relevant divisions trained in the use of MAXICO and E-Budget systems	<b>(iii) Completed in 2020 annual verification. This indicator is a one-time completion target. IVA has received evidence for MAXICO &amp; E-Budget training.</b>	DIV AKT

Establish regular reporting of key internal initiatives to reduce costs and strengthen financial sustainability.	9	High level summary of key internal initiatives and their impacts	Completed for H1 2025. IVA has verified PLN's latest regular reporting of key internal initiatives to reduce costs and strengthen financial sustainability based on the recently launched new transformation program. The updated list still consisted of 13 sub-initiatives with considerable financial impact through lowering electricity production cost or boosting PLN's revenue. Out of the 13 sub-initiatives, one was reported on hold, another two were delayed, and the remaining 10 were on track.	DIV TCO DIV ANG
Accurate procurement monitoring report prepared and submitted quarterly, based on data in the E procurement plus SAP integrated system	10	Report submitted following procurement Monitoring Framework	Status: Partially completed for H1 2025. IVA has verified the spending profile sheet and concluded that PLN's spending in 2024 is under the threshold mentioned in Schedule 4 of the Loan Agreement. IVA has also verified the PMR submitted by PLN and confirmed that all indicators have been reported and analyzed. However, there were several clarifications raised to PLN regarding the indicators in the PMR, and these have not been answered yet.	DIV MRP DIV HTD
Competitive bidding with international participation for application of new technologies and expertise	11	Recruit consultants through international competitive bidding to support PLN in PLTS	Status: Completed in 2023 annual verification. IVA has verified the prequalification document and found that in section 2, article 5.1, PLN has openly stated that the procurement is an open international competitive bidding (ICB) and can be applied by all applicants as legal entities. IVA also did not find any clauses that prohibit or hinder international firms competing in the procurement. The usual administration requirements had been adapted to accommodate participant from outside of Indonesia.	DIV MUM
Procurement audits each year of 10% of all contracts at Wilayah/Area offices	12	Procurement audits conducted and information sheet shared with ADB	Status: Status: Completed for H1 2025. IVA has verified the H1 2025 audit report for all 5 UID/UIWs with total and individual sampling rate above 10%. Recommendations that were made in the audit report all have target date in H2 2025, but some recommendations with target date in Jul-2025 have been closed by the relevant PIC.	DIV ATD
Strengthen institutional capacity on environmental and social safeguards,	13 (i)	Safeguards focal persons appointed at HSSE, PPT, each UIW, UP3 and UP2K office.	(i) Completed. As of 30 June 2025, All 55 units (100%) have appointed environmental safeguards focal persons, and all 55 units (100%) have appointed social safeguards focal persons.	DIV ODS / DIV ODM
	13 (ii)	Technical Guidance including training materials on safeguards for EGDP I (SNT)	(ii) Completed since 2023 Annual Verification. The Technical Guidance has been finalized and approved on 17 October 2023. The training materials on safeguards have been finalized and used during the Training of Trainers (ToT) in Bandung on 4-6 December 2023.	DIV TEK

13 (iii)	Annual training conducted for Environmental and Social Safeguards Focal Persons	(iii) Not completed. As of June 2025, PLN has not conducted the 2025 capacity building.	DIV ODM dan DIV ODS
13 (iv)	Briefing brochure on safeguards requirements	<p>Partially Completed. Social safeguard: During Annual Verification 2024, brochure dissemination was conducted by DIV ODS and DIV ODM and facilitated by relevant units (UIDs/UIWs). The target for this indicator was also completed in 2024. However, in Interim Verification 2025 (January – June), there is additional brochure dissemination activities were conducted by UID Kalselteng. This activity was a follow-up to the dissemination conducted in 2024. As the previous verification result, the status for this indicator is completed.</p> <p>Environmental safeguard: PLN and ADB agreed that the brochure on environmental safeguards is not required because the PLN procedure entitled Environmental and Social Protection Procedures on Distribution Networks by Partners No. PT-HSSE-27 prepared by DIV K3L and issued on January 15, 2021, is considered sufficient to fulfill this action point. However, during 2024 AV, it was discussed that PAP provision required dissemination through briefing session, and this cannot be covered through inclusion in the contract. In July 2025, PLN unit informed that there were units that had socialized the briefing brochure, while others had not. Hence, the status is marked as partially completed by 2025 IV.</p> <p>Social safeguard: Brochure dissemination was completed in 2024 by DIV ODS and DIV ODM, with support from UIDs/UIWs, fulfilling the indicator target. In the January–June 2025 Interim Verification, UID Kalselteng conducted additional dissemination as a follow-up. Since dissemination was intended as a one-time activity during the RBL period and has been completed across all units, the indicator is considered “Completed,” with any further activities verified as supplementary</p>	
13 (v)	Safeguards code of practice developed for solar PV, mini/micro-hydro, and small biogas facilities.	(v). Completed since 2022 Interim Verification. The final version of code of practices for solar PV and mini/hydro has been issued in June 2022.	DIV TEK

Strengthen safeguards screening and assessment:	14 (i)	Distribution line, solar PV, mini/micro-hydro, and biogas plant development plans internally screened for environmental safeguards by UIW based on list of villages in key biodiversity areas, and monitored by HSSE	(i) Completed. IVA has received the screening form for Semester I 2025 based on the KKP document approved in 2025 from all UIW/UP3 in December 2025.	DIV ODM dan DIV ODS
	14 (ii)	UIW annual workplan is screened and categorized by DLH and Forestry Department	(ii) Partially completed UIW/UID Kalselteng and Kaltimra have completed their annual work plan screening, whereas the screening for Kalbar, MMU and P2B are still being processed	DIV TEK
	14 (iii)	Involuntary resettlement and Indigenous Peoples (Customary Communities) screening and categorization reports prepared by UIW and reviewed by PPT.	(iii) IVA receives screening forms and KKP documents that have been approved in 2025. Based on the forms and KKPs, there are 543 activities, consisting of 529 Distribution Line (DL) activities and 14 Renewable Energy (RE) activities with breakdown as follows: UID Kalbar 155 DL and 2 RE, UID Kalselteng 178 DL and 19 RE, UID Kaltimra 40 DL, UIW MMU 44 DL and UIW P2B 112 DL and 2 RE. PLN claims that all activities are Category C of IR and IP safeguards due to no significant impact. IVA verifies that there is no activity in all UIDs/UIWs that potentially trigger Category A of IR safeguard. Regarding the IP safeguard, IVA verifies that 186 activities of DL line and 14 activities of RE with locations listed in IP databases, are Category B of IP safeguard. Based on information submitted by PLN in the screening form (IP rapid assessment and IP impact checklists), IVA verifies that none of all 543 activities are Category A of IP safeguards.	DIV ODM dan DIV ODS

	<b>14 (iv)</b>	UKL/UPL of annual activities prepared in accordance with screening results and submitted to relevant DLH. Executive summaries of UKL/UPL disclosed on PLN website.	(iv) Partially completed. The additional DPLH for existing electricity distribution network medium voltage in Kalbar which was secured in March 2025 was only disclosed on PLN website in September 2025, therefore this action item is marked as partially completed in the 2025 IV.	DIV TEK
Strengthen meaningful consultation with affected persons including customary communities and vulnerable groups.	<b>15 (i)</b>	Vulnerable groups (poor households, customary communities, women, and children/youth) invited to consultations.	(i) Partially completed. PLN reported 49 consultations carried out in January – June 2025 with information whether vulnerable groups have been invited to the consultations. However, IVA could only verify 46 consultations as they are completed with attendance lists. Based on the submitted documentation, PLN has invited women and customary community into the consultations, but not yet the poor households, elderly and youth	DIV ODM dan DIV ODS
	<b>15 (ii)</b>	Topics of consultations include selection of sites and implications of distribution lines, solar PV, micro hydro, and biogas plants, cost estimates for electricity connection and installation, procedure of accessing free electricity program to the poor, and awareness on safe usage and economic benefit of electricity.	(ii) 46 consultations out of 49 consultations on distribution line activities were completed with supporting document of minute of meeting with information on the topic of discussion during consultation. However, IVA did not find any evidence on consultations on RE-related topics. IVA also could not find consultation events for RE activities in the submitted data and documents	DIV LDS

	<b>15 (iii)</b>	Consultation records on issues discussed and agreements reached with participants completed with attendance list segregated by gender and customary (indigenous) status.	(iii). Based on data submitted by PLN, 21 units have reported meaningful consultations and 27 units reported there is no consultation between January and June 2025. There is a total of 49 consultations reported between January and June 2025. Of these 49 consultations, 46 consultations are completed with documentary evidence such as MoM, attendance list, and photos. The remaining three consultations are not completed with attendance list. The 46 consultations with complete evidence are supported with attendance lists segregated by gender and attended by women. Of these 46 consultations, eight consultations were also attended by customary communities.	DIV ODM dan DIV ODS
	<b>15 (iv)</b>	All complaints/grievances and remedial measures recorded and compiled	(iv) Only UID Kalselteng submitted GRM monitoring data and reported 16 grievance cases during January – June 2025 which all have been resolved. The rest of units (UID Kalbar, UID Kaltimra, UIW MMU, and UIW P2B) did not submit GRM monitoring data for the period of January – June 2025.	DIV ODM dan DIV ODS
Improve transparency and fair compensation for negotiated land acquisition and voluntary land donation to ensure that people will maintain the same or better level of income or livelihood.	<b>16 (i)</b>	Written agreements on the land use for the installation of distribution transformers	(i) Partially completed. IVA receives monitoring form of land usage for distribution transformers. Out of 47 UP3/UP2K, 29 units sent data (monitoring form), but 18 units did not. Of the 29 units, four units reported there is no distribution transformer installation on private land from January to June 2025. Based on submitted data and evidence, there are 622 distribution transformer installations on private land and IVA receives 177 eligible written agreement copies. Thus, IVA verifies the achievement of this indicator is 28.4% and this means PLN has not met the 2025 target (90%).	DIV ODM dan DIV ODS

16 (ii)	Written agreement regarding voluntary land donation for construction of micro-hydro and biogas power plants and village-level solar PV from land owners or clan members of customary communities with communal access rights prior to the construction commencement.	(ii) During the 2025 Interim Verification Mission, DIV LDS confirmed that no small RE plant construction contracts were issued for January–June 2025 due to the absence of a PMN budget. PLN also did not submit any related written agreements. In line with prior verifications and the agreed approach between PLN and ADB, the indicator is classified as “Not applicable” for this period.	DIV ODM dan DIV ODS
16 (iii)	Semi-annual verification (sample) by an independent party to ensure that the negotiated land acquisition and voluntary land donation were conducted through proper consultations. Voluntary donation did not severely affect the living standards	(iii) During the 2025 Interim Verification, DIV LDS confirmed that no new contracts for the construction of small RE plants were issued for the January–June 2025 period. Consequently, PLN did not submit any data and evidence on land acquisition. Based on this, the status of the indicator for this period is classified as “Not applicable”	DIV ODM dan DIV ODS
16 (iv)	Proper mitigation (compensation for lost non-land assets or income and income restoration program) for land users affected by the program.	(iv) As agreed during the 2024 Interim Verification, indicator verification follows the RE activity plan for each reporting period. Since no small RE plant construction contracts were issued for January–June 2025, and PLN submitted no data on land user impact, the indicator is deemed “Not applicable” for this period.	DIV ODM dan DIV ODS

Monitor and report on compliance with safeguards program actions and program impacts on income/livelihoods of affected households.	17 (i)	Q1 to Q3 RBL implementation reports submitted to ADB include consolidated results of safeguards screening and safeguards program actions.	(i) Completed. PLN had submitted the Q1 to Q3 2025 Report that consists of Q1-Q5 2025 RBL KMP implementation reports to ADB and IVA. PLN also submitted the results of safeguards screening and documentary evidence of safeguards program actions. PLN updated the status of PAP safeguards in its Q2 2025 Report using the IVA's 2024 Annual Verification summary. However, since IVA receives complete and updated documentation for all PAP social safeguards during each verification—including this 2025 Interim Verification—the indicator is considered “Completed.” IVA recommends that PLN consistently update PAP statuses in quarterly reports based on the latest data and supporting evidence submitted during verification	DIV KEU
	17 (ii)	Impacts of program activities on the income/livelihood of affected persons monitored by DIV PPT (DIV ODS, DIV ODM after restructuring in Dec 2022) through review of complaint handling and compensation records. Corrective actions implemented and documented if adverse impacts on income/livelihood are identified	(ii) DIV ODS have collected complaint monitoring forms from UID Kalselteng, but not other UIDs in Kalimantan. DIV ODM have not collected complaint monitoring forms from UIW MMU and UIW P2B. Livelihood and income loss cases often result from distribution line activities involving productive tree removal. While PLN and its contractors typically resolve these through compensation and informal agreements, the lack of formal documentation hinders IVA's ability to verify case resolution. Due to lack of records and not all units have reported grievance cases and complaint handling/compensation, this indicator is deemed as Partially completed	DIV ODM dan DIV ODS
	17 (iii)	Assessment of whether customary communities' access to electricity has increased by the Mid Term Review and end of the Program	(iii) Completed. PLN submitted 2025 Interim data on the new connections in KMP regions with village breakdown per UID/UIW. IVA then screened the villages against the IP databases. In total there is a total increase of electricity access for IP communities of 272,690 new connections between 2021-2025 interim. By Mid Term in 2022 there is a total of 93,579 new connections, while between Mid Term and now (from end of 2022 to 2025 Interim) there is a total of 128,597 new connection	DIV PPR

# 7. APPENDIX

## PAP 9. High Level Summary of Key Internal Initiatives and Their Impacts Included In The 4<sup>th</sup> Quarter 2025 RBL Progress Reports

Perusahaan Listrik Negara Cost Reduction and Revenue Initiatives												
Date of Report		27-Oct-25		For Period Ended				Update		1 <sup>st</sup> Update		
Version		1.0										
#	Initiative Num	Sub Initiative Name	Description	Start Date	End Date	Status	Notes Status	Financial Type	Expected Costs / Benefits	Actual Cost / Benefits	Division/PLN Group PIC relati	NOTES
1	500	Completion of Transmission and GI Project in UIP JBB	Completing transmission and substation projects in Western Java to deliver energy from cheaper power plants	01/01/2020	31/12/2026	On Track	Some projects have been delivered: SUTET Muara Karang - Duri Kosambi GITET Muara Tawar On Going Construction: SUTET Muara Tawar - Bekasi	Cost Reduction	Expected savings of Rp 1.68T (2023) Rp 2.42T (2024)	Done Commissioning and Saving start in Dec 2024	GM P2B EVP MKJ	Carried Over from Transformation 1.0 2023 Completion of Transmission and GI Project in UIP JBB - Looping Jakarta
2	505	Completion of Transmission and GI Project in UIP JBTB	Completing transmission and substation projects in Eastern Java and Bali to deliver energy from cheaper power plants	01/12/2021	01/12/2029	Delayed	Caused by higher price of tower material in the market compared to the standardized in Kemenperin. Current Status : Procurement Delay	Cost Reduction from	Expected savings Rp 2.3T (2029)	Daleyed Commissioning in 2030 Saving start in 2031	GM P2B EVP MKJ	Carried Over from Transformation 1.0 2023 Completion of Transmission and GI Project in UIP JBTB - Bangli
3	509	Completion of Transmission and GI Project in SBS - Strengthening South Sumatra-Lampung and Evacuation of Rantau Dadap Geothermal Power Plant	Completing transmission and substation projects in Southern Sumatra to deliver energy from cheaper power plants	08/08/2020	31/12/2027	On Track	Caused by higher price of tower material in the market compared to the standardized in Kemenperin. Current Status : Procurement Delay	Cost Reduction	Expected savings 261B (2025)	Saving start in 2030	EVP MKS	Carried Over from Transformation 1.0 2023 SUTET 500 kV Muara Enim - New Aur Duri
4	21596	Optimization of ICONNET Sales	Optimizing sales of fiber internet products	01/01/2024	31-Dec-24	On track		Revenue Sales from Fiber Internet sales	Rp 1852 B (2024) Rp 2853 B (2025) Rp 4615 B (2026) Rp 5757 B (2027)	- Cumulative Revenue till December 2024 Rp 1,8 T - Cumulative Revenue from Jan to September 2025 Rp1.282 B	ICON Plus	Jan - Dec 2024 Jan - Sep 2025
5	21609	Demand Creation from the Hijaunesia Acceleration Group Project	Creating a new electricity consumer market from the Hijaunesia Acceleration Group Project	01/01/2024	30-Apr-25	Delayed	On Progress LOI	Revenue Sales from Solar Power Plant	Rp 546,1 B (2025)	saving start in 2025	PLN IP	Need to resubmit due to change of directors
6	21611	Demand Creation from the Hijaunesia Standard Group Project	Creating a new electricity consumer market from the Hijaunesia Standard Group Project	01/01/2024	31-Dec-25	On track	On Progress tender	Revenue Sales from Solar Power Plant	Rp 536,2 B (2026)	saving start in 2026	PLN IP	
7	21612	Demand Creation from the Saguling and Singkarak Solar Power Plant Project	Creating a new electricity consumer market from the Saguling and Singkarak Solar Power Plant Project	01/01/2024	31-Jul-25	Cancelled	The project was taken over by another party. PLN only had 25% shareholder	Revenue Sales from Solar Power Plant	Rp 139,7 B (2026)	saving start in 2026	PLN IP	The project was taken over by another party. PLN only had 25% shareholder
8	21610	Demand Creation from the East Cluster Dieselization Project	Creating a new electricity consumer market from the East Cluster Dieselization Project	01/01/2024	30-Jun-25	Delayed	Waiting for pricing from Indonesia MoEMR	Revenue Sales from Solar Power Plant	Rp 84,1 B (2027)	saving start in 2027	PLN IP	
9	21613	Demand Creation from the Nusa Penida and Karimun Jawa Hybrid Power Plant Project	Creating a new electricity consumer market from the Nusa Penida and Karimun Jawa Hybrid Power Plant Project	01/01/2024	31-Dec-26	On track	On progress submission	Revenue Sales from Solar Power Plant	Rp 11,6 B (2026)	saving start in 2026	PLN IP	
10	21651	Business Planning for EV Fleet Management	Creating a new business model through electric vehicle fleet management	01/01/2024	31-Dec-24	On track	Implemented since December 2024	Revenue Sales from EV Fleet Business	Rp 1,7 B (2024) Rp 5,9 B (2025) Rp 7,3 B (2026) Rp 9,5 B (2027) Rp 13 B (2028)	Revenue in 2024 Rp 22,8 B (EV 4W, EV 2W, and Charging Station)	ICON Plus	Jan - Dec 2024
11	21563	Procurement and Commercialization of SPBKLU Business	Supporting the EV ecosystem through the procurement and commercialization of Battery-Based Electric Vehicle Charging Stations	01/01/2024	30-Dec-24	On track		Revenue Sales from SPBKLU Business Model	Rp 1,7 B (2024) Rp 5,9 B (2025) Rp 7,3 B (2026) Rp 9,5 B (2027) Rp 13 B (2028)	Revenue in 2024 Rp 48 M	DIV PPN	Jan - Dec 2024
12	21552	Commercialization of SPKLU Business (Ground, Pole)	Supporting the EV ecosystem by commercializing the Electric Vehicle Charging Station business, both ground-based and pole-mounted	01/01/2024	31-Oct-24	On track		Revenue Sales from SPKLU Business Model	Rp 20,6 B (2024) Rp 33,4 B (2025) Rp 48,7 B (2026) Rp 67,1 B (2027) Rp 89,2 B (2028)	-Revenue in 2024 Rp 22,4 B - Revenue in Jan 2025 - Agus 2025 : Rp 28,2 B	DIV PPN	Jan - Dec 2024 Jan - Agu 2025
13	21549	Development of iWoods	Developing an application to support electric vehicle home charging services	01/01/2024	31-Dec-24	On track		Revenue Sales from Home Charging Business Model	Rp 67,2 B (2024) Rp 87 B (2025) Rp 103,6 B (2026) Rp 120,1 B (2027) Rp 136,4 B (2028)	Revenue in 2024 Rp 20,1 B - Revenue in Jan 2025 - Agus 2025 : Rp 11,1 B	DIV PPN	Jan - Dec 2024 Jan - Agu 2025