

The background of the cover features a blue-tinted photograph of several workers in silhouette, working on a high-voltage power line tower. The workers are positioned in the lower half of the frame, with the tower's lattice structure extending upwards. The overall scene is set against a light sky.

# *Environmental and Social Management Plan Monitoring Report 2024*

**PT PLN (Persero)  
East Java Distribution Main Unit**



## TABLE OF CONTENTS

TABLE OF CONTENTS	i
FIGURES	ii
GLOSSARY	iii
PREFACE	v
APPROVAL SHEET	vi
1 CHAPTER I Introduction	1
<b>1.1</b> <b>Purpose of the Monitoring Report 2024</b>	<b>1</b>
<b>1.2</b> <b>Brief Project Description</b>	<b>1</b>
<b>1.3</b> <b>Compliance with National Regulation</b>	<b>2</b>
1.3.1    UKL UPL Documents for Warehouse and Project Activities	3
1.3.2    Hazardous Waste Storage Permit	3
<b>1.4</b> <b>Environmental and Social Management Plan (ESMP)</b>	<b>3</b>
1.4.1    Preconstruction Phase	3
1.4.2    Construction Phase	3
1.4.3    Operational Phase	3
2 CHAPTER II Results	5
<b>2.1</b> <b>Environmental and Social Screening Checklist</b>	<b>5</b>
<b>2.2</b> <b>Monitoring the Pre-Construction Period</b>	<b>6</b>
<b>2.3</b> <b>Monitoring the Construction Period</b>	<b>7</b>
<b>2.4</b> <b>Monitoring the Operation Period</b>	<b>9</b>
<b>2.5</b> <b>Warehouse Monitoring Results</b>	<b>9</b>
<b>2.6</b> <b>Health and Safety Monitoring</b>	<b>10</b>
<b>2.7</b> <b>Training, Stakeholders Engagement and Grievance Redress Mechanism (GRM) Implementation</b>	<b>12</b>
<b>2.8</b> <b>Summary of Key Findings</b>	<b>15</b>
CHAPTER III Conclusion and Recommendation	16
Appendix 1 :    UID Jatim’s Detailed Business Location	17
Appendix 2 :    ESMP Matrix	2
Appendix 3 :    List of Environmental Approvals and Permits	8
Appendix 4 :    List of Indonesia’s Environmental and Social Regulations	68
Appendix 5 :    List of Standard Operational Procedure in Distribution Lines Construction	74
Appendix 6 :    Gas Chromatography and Wipe Laboratory Test Result	75
Appendix 7 :    Screening Form Result	78
Appendix 8 :    ROW Safety Distance and Socialisation Notes	95
Appendix 9 :    Road Safety Sign and Personal Protective Equipment Photos	96
Appendix 10 :    Material Arrangement with 5S Rules Photos	97
Appendix 11 :    No Oil Seepage from Transformation and Empty Transformation Photos	97
Appendix 12 :    Materials Control Application (In and Out) and Warehouses Materials Photos	98

## FIGURES

Figure 1 The Working Area of PLN UID Jatim	1
Figure 2 RoW dan Safe Distance on Distribution Power Lines, 2024	7
Figure 3 Written Agreement	7
Figure 4 Warning Attention Board, 2024	8
Figure 5 Vendor's HSE Commitment	8
Figure 6 Example of CSMS Certificate	8
Figure 7 UID Jatim Transformer Warehouse Condition, 2024	9
Figure 8 Hazardous Waste Storage at UP3 Pasuruan, 2024	9
Figure 9 Transformer Offline Oil Sampling for PCBs Test, 2024	10
Figure 10 Hazardous Waste Storage, 2024	10
Figure 11 INSPEKTA Monitoring Report, 2024	11
Figure 12 Improvement of INSPEKTA Monitoring Report, 2024	11
Figure 13 The top-nine major diseases within PLN employees, 2024	12
Figure 14 Emergency response simulations, 2024	12
Figure 15 CSR Programs at PLN UID Jatim, 2024	13
Figure 16 The Total of Interferences in 2024	13
Figure 17 Composition of Electricity Service Outage Causes (2024)	14
Figure 18 PLN Mobile Application and Instagram	14
Figure 19 Summary of Repeat Outage Reports and Total Service Complaints via PLN Mobile in 2024	14

## GLOSSARY

AGO	<i>Aplikasi Gudang Online</i> – Online Warehouse Application
AIIB	Asian Infrastructure Investment Bank
AMI	Advanced Metering Infrastructure
AMDAL	Environmental and Impact Assessment – for a high-risk business
AMR	Automatic Meter Reading
APP	Metering and Breaker Equipment
ATTB	Fixed but Not Operating Assets
B3	<i>Bahan Berbahaya dan Beracun</i> – Hazardous Materials
BPBD	<i>Badan Penanggulangan Bencana Daerah</i> – regional government body responsible for coordinating disaster prevention, preparedness, emergency response, and post-disaster recovery within its designated region
CSMS	Contractor Safety Management System
CSR	Corporate Social Responsibility
DPLH	<i>Dokumen Pengelolaan Lingkungan Hidup</i> – Environmental Management Document
DELH	<i>Dokumen Evaluasi Lingkungan Hidup</i> – Environmental Evaluation Document
DS	Distribution Substation
ESMP	Environmental and Social Management Plan
ETAP	Electrical Transient Analysis Program
GSW	Ground Steel Wire
HIRARC	Hazard Identification, Risk Assessment, and Risk Control
HSSE	Health, Safety, Security, Environment – K3L
INSPEKTA	PLN online application to track health and safety non conformities, including risky behaviors and hazardous environments
IUPTL	Electricity Supply Business License
JSA	Job Safety Analysis
JTM	Medium Voltage Lines
JTR	Low Voltage Lines
kV	Kilovolt
LB3	<i>Limbah B3</i> – Hazardous Waste
MCB	Miniature Circuit Breaker
PCB	Printed Circuit Board
PDKB	Work in (High) Voltage Condition
PLN	<i>Perusahaan Listrik Negara</i> – (Indonesian) State Electricity Company
PPE	Personal Protective Equipment
Pusdiklat	<i>Pusat Pendidikan dan Pelatihan</i> – Education and Training Centre
ROW	Right of Way
RUPTL	Electricity Supply Business License
SKTM	<i>Saluran Kabel Tegangan Menengah</i> – Medium Voltage Cable Channel
SKTR	<i>Saluran Kabel Tegangan Rendah</i> – Low Voltage Cable Channel
SUTM	<i>Saluran Udara Tegangan Menengah</i> – Medium Voltage Overhead Lines
SLA	Self-Level Agreement
SLO	Operational Qualification Certificate
SOP	Standards Operational Procedure
SPK	<i>Surat Perintah Kerja</i> – Work Agreement
SPPL	<i>Surat Pernyataan Bersedia Mengelola dan Memantau Lingkungan Hidup</i> – Readiness Statement to Manage and Monitor the Environment – for low-risk business
TPS	Temporary Disposal Site
UKL	<i>Upaya Pengelolaan Lingkungan Hidup</i> – Environmental Management Efforts – for medium-risk business
UPL	<i>Upaya Pemantauan Lingkungan Hidup</i> – Environmental Monitoring Efforts – for medium-risk business

<i>UID</i>	<i>Unit Induk Distribusi</i> – a unit business of PLN focuses on electric power distribution
<i>UP2D</i>	<i>Unit Pelaksana Pengatur Distribusi</i> – a subunit below UID, responsible to manage the reliability of the 20kV distribution system to supply electrical energy continuously without causing failure to consumer
<i>UP3</i>	<i>Unit Pelaksana Pelayanan Pelanggan</i> – a subunit below UID, responsible to manage customer services, like electric distribution network management, electricity sales, and service quality improvement
<i>ULP</i>	<i>Unit Layanan Pelanggan</i> – a subunit below UP3 aka a sub-subunit below UID, responsible to support customer services which include supply turn-on and disconnection, billing and payment collection, and other customer services during electricity distribution in smaller areas

## PREFACE

In the implementation of AIIB – PLN Strengthening Distribution Network in East Java and Bali Project, there are several document requirements to comply with the AIIB environmental and social protection standards and Indonesian legislation. In preparation, the Bank and PT PLN have approved the Environmental and Social Management Plan Framework document, which is general in nature and serves as an umbrella for making this more detailed protection document of Environmental and Social Management Plan (ESMP).

PT PLN (Persero) Distribution Main Unit – UID Jatim has a high commitment in the effort to conserve the environment. Therefore, planning, implementing and reporting the implementation and monitoring of the ESMP activities must be carried out periodically as prepared in this document, the ESMP Monitoring Report 2024 UID Jatim. The full report is written in English, with a summary in Indonesian.

We would like to thank all of those who have assisted in the preparation of this PT PLN (Persero) UID Jatim ESMP 2024 Monitoring Report document.

Surabaya, 16 Maret 2026



A circular official stamp of PT PLN (Persero) UID Jawa Timur is shown. The stamp contains the text "PT PLN" at the top, "UID JAWA TIMUR" in the center, and "Persero" at the bottom. A handwritten signature in blue ink is written over the stamp, and the name "AHMAD MUSTAQIR" is printed in bold black text below the signature.

## APPROVAL SHEET

**Environmental and Social Management Plan (ESMP)  
Monitoring Report – 2024  
PT PLN (Persero) East Java Main Unit – Distribution**

AIB – PLN Strengthening Distribution Networks in East Java and Bali Project

Surabaya, 16 Maret 2026

**GENERAL MANAGER**



A circular official stamp in blue ink. The outer ring contains the text 'PT PLN' at the top and '(Persero)' at the bottom. Inside the ring, it says 'UDS JAWA TIMUR' with two small stars on either side. Below the stamp, the name 'AHMAD MUSTAQIR' is printed, followed by a handwritten signature in blue ink.

## CHAPTER I Introduction

### 1.1 Purpose of the Monitoring Report 2024

One of PLN UID Jatim's objectives is to mitigate or avoid adverse environmental and social impacts in AIB – PLN Strengthening Distribution Networks in East Java – Bali Project. The purpose of this Annual Environmental and Social Monitoring Report is to present the environmental and social mitigation and monitoring activities in East Java Province undertaken by PLN UID Jatim covering the project in 2024. This report includes updates on project progress and evaluation of environmental and social program implementation. The report is written by an environmental officer and supervised by Manager of Health and Safety Division and General Manager of PLN UID Jawa Timur.

### 1.2 Brief Project Description

PLN UID Jatim is a unit business below PT PLN (Persero) which is a state-owned company that is responsible for managing electricity in Indonesia, according to Government Regulation No. 18 Year 1972 that PLN is in charge of providing electric power to the public. PLN UID Jatim has been responsible for managing the electric power distribution system in East Java Province since 1961, with a working area of 47.963 km<sup>2</sup> and a population of 40,67 million people (BPS, 2020). PLN UID Jatim is providing electrical services for people in urban, rural areas, and remote islands, such as Kangean, Sapeken, and Sapudi Islands, to mention some.

In the operation of adequate and reliable electric power distribution in East Java Province, PLN UID Jatim organizationally consists of 16 UP3s, one UP2D, one UP2K, and 112 ULPs. The condition of PLN UID Jawa Timur electrical system until December 2024 shows that the power is capable of 10.176 MW, and the peak load was 6.585 MW and reserves was 2.129 MW. Currently, PLN UID Jatim has served more than 14 million customers, consisting of household, government, industry, and business customers. Strengthening the distribution networks continues to be carried out to serve the electricity needs of the entire community and economic development in East Java Province. The detailed location of UID, UP2D, UP2K, UP3, and ULP can be found in Appendix 1.



Figure 1 The Working Area of PLN UID Jatim

East Java and Bali Power Distribution Strengthening Project comprises the expansion of medium-voltage (MV) and low-voltage (LV) distribution network, including erection of new poles, cable stringing, trenching and cable burial in urban environment, and installation of distribution transformers, customer connection and meter replacement, MV switch of LBS and Rec, and MV Distribution cubicle and substation. The subprojects comprise the following activities taking place in defined study areas and for which AIB funds are sought:

- Delivery to site and temporary storage at site of material, including transformers, distribution power lines, poles and other type of materials;
- Installation or upgrading of the distribution network, including clearing of the right of way; civil works like foundation digging for poles, and in some instances trenching and or boring; erection of poles; stringing of power lines; installation and replacement of transformers;

- c. Storage, handling, and disposal of end-of-life transformers;
- d. Connection to the network and to households (including installation of customer meter boxes and circuit breakers); and
- e. Maintenance of distribution lines like vegetation clearance.

Table 1 below is describing the components of the project.

*Table 1 The Component of East Java and Bali Power Distribution Strengthening Project*

No.	Distribution Network Type	Activities
1	Overhead line	Improvement and expansion of distribution network above ground level which requires (i) land use to install electrical poles no more than 0,2 m <sup>2</sup> ; (ii) the possibility of removal non-ground access (especially trees) within 2,5 m of the conductor during the installation process, and existing road's line (ROW) with a width depending on line voltage and type of facility planned or located in the area belongs to the road.
2	Underground line	Being considerate if overhead line is not applicable (for example: in urban/commercial areas) Using horizontal directional drilling (HDD) for a road crossing to minimize the impact, and minimum drilling along the side of road from HDD exit point to a pole. The possibility of underground lines installation is low.
3	Distribution transformer	Installed on pole structure Distribution transformers are arranged into two categories: pad-mount and pole mount. Pad-mount transformers will be installed on public land, or in locations where customers need power at the primary distribution level, usually in a commercial centre or an industrial area.

### 1.3 Compliance with National Regulation

In running the business, PLN UID Jatim ensures compliance with all relevant regulatory requirements. PT PLN (Persero) is established with the Deed of Incorporation of Limited No. 169 dated 30 July 1994 and its amendment No. 9 dated 20 January 2015. The business activities, particularly in power distribution at PLN UID Jatim, are performed based on the following permits:

- a. Minister of ESDM Decree No. 634-12/20/600.3/2011 concerning PT PLN (Persero)'s Electricity Supply Business License (IUPTL) – for the electricity in Java and Bali areas, the electricity supply business permit as stated in Appendix 1;
- b. Minister of ESDM Decree No. 188.K/HK.02/MEM.L/2021 concerning PT PLN (Persero)'s Electricity Supply Business Plan (RUPTL) 2021-2030 – for the distribution development plan in Java, Madura, and Bali areas as stated in Appendix 1.

In Indonesia, the Act No. 32 Year 2009 with amendments to the Act No. 11 Year 2020 is the main environmental law covering important environmental issues, including environmental standards, type of environmental documents, environmental permits, and environmental audits.

According to Government Regulation No. 22 Year 2021 regarding Environmental Protection and Management, every business that has significant and insignificant impacts on the environment must have an Environment Approval, namely:

- Statement of Environmental Management and Monitoring Capability for low-risk businesses that have the least environmental effects;
- Environmental Management Efforts (UKL) and Environmental Monitoring Efforts (UPL) for medium-risk businesses, which was constructed with medium to low environmental impacts; and
- Environmental Impact Assessment (AMDAL) for a high-risk business, which was built in a conservation ecosystem, leading to harming environmental.

In 2024 in UID Jatim there is no expired or renewed permit or certificate, all have been in accordance with national regulation. The regulations stated in the document were the latest rules of Indonesian government.

### 1.3.1 UKL UPL Documents for Warehouse and Project Activities

In doing electric power distribution activities, PLN UID Jatim has the Environment Permit No. 17.0/3/02/V/2020 regarding Environmental Management Document (DPLH) of 20 kV Electricity Network for East Java Distribution Area. In addition, PLN UID Jatim's sub-units like UP2D and UP3s, sub-sub units named ULPs, and other support activities such as hazardous waste temporary storage also already have environmental documents. List of environmental approvals and permits in PLN UID Jatim is tabulated in Appendix 2. Following this approval, PLN UID Jatim is required to submit a report about the environmental and social commitments specified within the environmental documents to the Environmental Agency of each respective regencies every six months. In 2024 UID Jatim has submitted punctual environmental reports to the regional environmental agencies on June and December 2024.

### 1.3.2 Hazardous Waste Storage Permit

The types of hazardous waste generated from power distribution activities are used lubricating oil, battery and used battery, and used rags. These wastes are stored at hazardous waste temporary storages in several areas in East Java Province, with operating permit for each hazardous waste temporary disposal site (TPS) seen in Appendix 3 and condition of the hazardous waste temporary storages can be seen in Figure 8.

## 1.4 Environmental and Social Management Plan (ESMP)

The ESMP of PLN UID Jatim has encompassed the entire project stages and the mitigation systems, starting from planning or pre-construction to operational phase.

### 1.4.1 Preconstruction Phase

The preconstruction phase is the time to determine the location and capacity of the project and make plans to mitigate risks during construction work. Preconstruction activities include the calculation and simulation to optimize the configuration of the electric power distribution network, a field survey to meet the construction standards and environmental requirements, public consultation and communication with stakeholders and the general public on the scope, and possible impacts and proposed mitigation measures.

### 1.4.2 Construction Phase

Construction activities that carried out in this project, including new connections for both medium and low voltage power line, distribution substation, cubicle, kWh meter; and constructed improvements due to fallen trees, tornadoes, and others. The implementation of construction activities is in accordance with the standard operational procedures that have been set, including the Indonesian National Standard, PLN Standard, and PLN UID Jatim's Internal Working Procedure. At the end of the construction phase, a commissioning test is to be performed to ensure that they are safe and meet the design requirements.

The projected impacts and risks during the construction phase are expected to be limited in scope but may include:

- Disturbance to traffic: The proposed interventions may involve temporary road closures and vehicle or pedestrian traffic deviations that could result in traffic congestion and perhaps risks of accidents.
- Temporary difficulties of access: during construction and installation of equipment, access may be limited to the adjacent buildings, and some disturbance to the neighbouring residents and users.
- Noise generation: The use of construction equipment could potentially impact workers and neighbourhood residents.
- Construction safety: Construction site activities, particularly work at height and/or live-line working, must be effectively managed to prevent injury to workers and disruption of the project.

### 1.4.3 Operational Phase

The purpose of this construction activity is to support the distribution of electricity so it can be accepted by customers without interruption. Thus, in the operational phase, routine monitoring and maintenance were carried out in accordance with applicable regulations and standards. The maintenance work can be performed either planned or unplanned by competent personnel. PLN UID Jatim has a team that is compatible to maintain the electrical equipment in live-line working or hotline maintenance of

PDKB – Live-line Working Team. Maintenance activities are also carried out by implementing occupational health and safety (OHS).

Environmental management in the operational phase is carried out by measuring the conditions of the work environment and environmental management based on ESMP matrix in the environmental document to ensure that environmental pollution does not occur. The social management activities are carried out by involving stakeholders like local communities, for example public consultation and socialization activities for safe electricity use and community development. The ESMP matrix is tabulated in Appendix 4.

## CHAPTER II

### Results

Numerous projects of PLN UID Jatim have been conducted in 2024 to enhance the JTM reliability and achieve the efficiency: new feeder construction for new GI operations, old materials displacement, old transformers replacement, key-point replacement and installation of LBS, recloser, DS, JTM, JTR, Substation construction, APP installation, and substitution of 1 phase and 3 phase meter boxes.

The institutional arrangement and staffing for Environmental and Social management and supervision in PLN UID Jatim in general and applied in the project is under the UID General Manager, Ahmad Mustaqir, with daily monitoring and implementation under the Safety, Security, Occupational Health and Environment Manager, Parlan. For the Implementation Units of UP2 and UP3 the supervision is under the UP Managers, and daily implementation under the Safety, Security, Occupational Health and Environment Team Leaders.

#### 2.1 Environmental and Social Screening Checklist

At the beginning of subprojects, an environmental and social screening checklist is used to review potential environmental and social safeguard impacts and determine whether the subprojects will trigger relevant safeguard policies of AIB. In the location selection process for the subprojects, PLN UID Jatim carried out the environmental and social screening including protected area, safe distance, main biodiversity area, indigenous peoples, cultural heritage, and the use of private land. The PLN UID Jatim's project capacity of power distribution strengthening in 2024 is tabulated in Table 2 below.

*Table 2 The PLN UID Jatim's Project Capacity of Power Distribution Strengthening in 2024*

No	Unit	Activity	Location (City/District)	Details
1	UP3 Surabaya Selatan	Network Reliability Improvement	- Surabaya City - Gresik Dist. - Sidoarjo Dist.	JTM: 21,84 kms JTR: 21,70 kms Substation: 185 set
2	UP3 Surabaya Utara	Network Reliability Improvement	- Surabaya City	JTM: 3,99 kms JTR: 10,87 kms Substation: 39 set
3	UP3 Malang	Network Reliability Improvement	- Malang Dist. - Batu City - Malang City	JTM: 36,8 kms JTR: 164,17 kms Substation: 240 set
4	UP3 Pasuruan	Network Reliability Improvement	- Pasuruan City - Probolinggo City - Pasuruan Dist. - Probolinggo Dist.	JTM: 49,66 kms JTR: 77,39 kms Substation: 205 set
5	UP3 Kediri	Network Reliability Improvement	- Blitar City - Kediri City - Blitar Dist. - Kediri Dist. - Tulungagung Dist.	JTM: 57,73 kms JTR: 139,44 kms Substation: 218 set
6	UP3 Mojokerto	Network Reliability Improvement	- Mojokerto City - Jombang Dist. - Mojokerto Dist. - Nganjuk Dist.	JTM: 92,99 kms JTR: 127,30 kms Substation: 205 set

Table 3 The PLN UID Jatim's Project Capacity of Power Distribution Strengthening in 2024

No	Unit	Activity	Location (City/District)	Details
7	UP3 Madiun	Network Reliability Improvement	- Madiun City - Madiun Dist. - Magetan Dist. - Ngawi Dist.	JTM: 45,61 kms JTR: 161,98 kms Substation: 165 set
8	UP3 Jember	Network Reliability Improvement	- Jember Dist. - Lumajang Dist.	JTM: 48,26 kms JTR: 85,88 kms Substation: 112 set
9	UP3 Bojonegoro	Network Reliability Improvement	- Bojonegoro Dist. - Lamongan Dist. - Tuban Dist.	JTM: 64,42 kms JTR: 87,96 kms Substation: 189 set
10	UP3 Banyuwangi	Network Reliability Improvement	- Banyuwangi Dist.	JTM: 14,54 kms JTR: 76,47 kms Substation: 67 set
11	UP3 Pamekasan	Network Reliability Improvement	- Bangkalan Dist. - Pamekasan Dist. - Sampang Dist. - Sumenep Dist.	JTM: 273,87 kms JTR: 101,13 kms Substation: 519 set
12	UP3 Situbondo	Network Reliability Improvement	- Bondowoso Dist. - Situbondo Dist. -	JTM: 44,81 set JTR: 39,49 set Substation: 45 set
13	UP3 Gresik	Network Reliability Improvement	- Surabaya City - Gresik Dist. - Lamongan Dist.	JTM: 23,36 kms JTR: 29,06 kms Substation: 130 set
14	UP3 Sidoarjo	Network Reliability Improvement	- Gresik Dist. - Mojokerto Dist. - Sidoarjo Dist.	JTM: 23,80 kms JTR: 121,51 kms Substation: 183 set
15	UP3 Surabaya Barat	Network Reliability Improvement	- Surabaya City - Gresik Dist. - Sidoarjo Dist.	JTM: 16,68 kms JTR: 24,59 kms Substation: 98 set
16	UP3 Ponorogo	Network Reliability Improvement	- Pacitan - Ponorogo - Trenggalek	JTM: 13,16 kms JTR: 105,05 kms Substation: 102 set

## 2.2 Monitoring the Pre-Construction Period

Constructing medium or low voltage network of JTM and JTR might affect in ecological, physical, and social aspects at pre-construction stage. In PLN UID Jatim, many of JTM and JTR construction have been conducted for mostly residents and industries. Before start any projects, the UP3, a sub unit of PLN, analyse the potential effects to environment, land, residents, indigenous people, and cultural heritage through screening form, seen in Appendix 7. The trees cutting and trimming under Right of Way (ROW) must be performed to ensure the networks reliability with the permission of landowners in agreement documents. The Figure 2 below shows the safety distance and ROW in this project and Figure 3 depicts the written agreement by the land owner for PLN to place distribution network on his or her land.



Figure 2 RoW dan Safe Distance on Distribution Power Lines, 2024

**SURAT IZIN PEMASANGAN JARINGAN LISTRIK**

Kepada Yth,  
**PT. PLN (Persero) Rayon Babat**

Saya yang bertandatangan di bawah ini:

Nama : SRIYANTO  
Alamat : Pendidikan RT3 RW 04  
Bukti / KTP : 352405284580001  
Untuk Pelanggan : Perluasan Jaringan PLN wilayah Sogo selatan \_\_\_\_\_

Dengan ini menyatakan dengan sesungguhnya dalam keadaan sadar dan tanpa paksaan telah memberikan **PERSETUJUAN** kepada **PT. PLN (Persero) Rayon Babat** untuk melakukan kegiatan pemasangan jaringan listrik di lahan / depan lahan pribadi milik (Saya / Keluarga). Dan jika dikemudian hari terjadi masalah perihal surat persetujuan dan pemasangan jaringan listrik ini, saya tidak akan menuntut dan tidak akan membebankan kerugian kepada PT. PLN (Persero) Rayon Babat.

Demikian surat persetujuan ini dibuat untuk dapat dipergunakan sesuai peruntukannya, atas perhatian dan kerjasamanya, kami ucapkan terimakasih.

Dibuat di,  
Pada tanggal,

Materai  
  
SRIYANTO

Figure 3 Written Agreement

### 2.3 Monitoring the Construction Period

During construction activities, the third parties responsible on doing the construction, must meet all the requirements of PLN standard and government regulation such as CSMS certified contractor, HIRARC, working permit, and standard operational procedures implementation, filled in contract document between PLN UID Jatim and vendors. For instance, installation and demolition of JTM, substation cubicle, JTR, SR APP 3 phase at UP3 Ponorogo. According to contract document No: 0060.SPK/DAN.01.03/F04110000/2023, the vendor has complied the requirements and assured the projects have been worked properly. The third parties who work in PLN must meet contractor safety management systems (CSMS) requirements. Figure 4 below shows the use of attention board as a work sign to increasing the

community awareness, while Figure 5 and 6 are to show vendors' commitment in HSE and CSMS Certificate respectively.



Figure 4 Warning Attention Board, 2024

- 2.3. Keselamatan, Kesehatan dan Keamanan Kerja K3) & Keselamatan Ketenagalistrikan (K2)
- a) Penerima Perintah dan seluruh tenaga kerjanya wajib mentaati segala peraturan perundang-undangan yang berlaku tentang Keselamatan, Kesehatan dan Keamanan Kerja (K3) & Keselamatan Ketenagalistrikan (K2);
  - b) Penerima Perintah wajib memiliki dan menerapkan Standard Operating Procedure (SOP) untuk setiap pekerjaan dan menjamin keamanan bagi para pekerjaanya;
  - c) Penerima Perintah dan semua tenaga kerjanya wajib menggunakan peralatan kerja dan Alat Pelindung Diri (APD) yang sesuai standar pada pelaksanaan pekerjaan yang berpotensi bahaya;
  - d) Penerima Perintah wajib menunjuk dan menetapkan Pengawas Pekerjaan/Pengawas K3 yang berkompentensi di bidang pekerjaannya;
  - e) Apabila perjanjian ini termasuk pada pekerjaan beresiko tinggi, Penyedia Jasa/Vendor wajib menggunakan sistem Lock Out Tag Out (LOTO);
  - f) Penerima Perintah bertanggung jawab menjaga keselamatan pekerjaanya. Apabila pekerja Penerima Perintah mengalami kecelakaan dalam pekerjaan ini, maka hal itu merupakan tanggung jawab Penerima Perintah dan Penerima Perintah wajib melaporkan ke instansi setempat yang terkait/berwenang dengan menyampaikan tembusannya kepada Pemberi

Figure 5 Vendor's HSE Commitment



Figure 6 Example of CSMS Certificate

## 2.4 Monitoring the Operation Period

Workers and society are the most affected parties during the operational stage. On the other side, waste is an affecting resource appears in this phase. For instance, for old transformers replacement, the transportation to a warehouse should be assured no oil spills from the transformer, and the warehouse must be covered as protection from rain. According to Government of Jatim Regulation No. 22 of 2021, warehouse must be covered to protect from the rain and provided an oil trap to prevent environmental pollution regarding to oil spills or leakage. Figure 7 below shows an example of the warehouse condition in UID Jatim.



Figure 7 UID Jatim Transformer Warehouse Condition, 2024

## 2.5 Warehouse Monitoring Results

Materials warehouse is distinguished with waste warehouse, in particular hazardous waste. Each unit of PLN UID Jatim has own materials warehouse. The materials such as meter circuit breaker (MCB), cables, and other equipment are organized into groups based on the type, certain physical or mechanical properties. In practice some discrepancy was found between the physics material total in the warehouse and data in the application when Integrated Management System (IMS) audit performed. To improve the monitoring and avoid the difference, the warehouse monitoring system has been improved by responsible officers through regular monitoring using the Online Warehouse Application (AGO – Aplikasi Gudang Online) and organising the warehouses orderly with detail as in Page 90.

The hazardous waste temporary disposal site is used for hazardous waste generated from power distribution activities such as used lubricating oil, battery, used battery, and used rags. Hazardous waste management is carried out with a third party owned a hazardous waste management permit from the Minister of Environment and Forestry. Before the waste were given to the third party to be managed, it is stored at hazardous waste temporary storages in several areas in East Java Province, with the operating permit for each hazardous waste temporary disposal site. In 2024, PLN UID Jatim has developed environmental procedures for handling spilled oil, storage and treatment hazardous and chemical materials that integrated with Integrated Management System (IMS) of PLN UID Jatim. The condition of the hazardous waste temporary storages in the PLN UID Jatim are illustrated in the figures below.



Figure 8 Hazardous Waste Storage at UP3 Pasuruan, 2024

As noted, one type of hazardous waste generated is used transformer oil. Based on the Ministry of Environment and Forestry Regulation No. P.29/MENLHK/SETJEM/PLB.3/12/2020, PCBs are prohibited from being used and it is still found in transformer oil. PLN UID Jatim has managed the PCBs by taking the inventory of offline and online transformers, visual testing based on the year of manufacture and transformer capacity, and conducting tests on transformers that may indicate contained PCBs. The criteria

for transformers that have potential to contain PCBs are transformers manufactured before 1997 and capacity more than 100 kVA.

The PCBs testing was done in stages. In 2024, 673 samples of offline transformers have been tested using Dextsil, Chromatography Gas and Wipe Test methods. The results depicted two (2) offline transformers were found contaminated by PCBs. The results of PCBs testing using Gas Chromatography and wipe test method can be seen in Appendix 6 and the PCBs test activity as in Figure 9.



Figure 9 Transformer Offline Oil Sampling for PCBs Test, 2024

PLN UID Jatim has 18 hazardous waste temporary disposal sites. The company has endeavoured to provide proper storages based on Indonesian Government Regulation No. 22 of 2021. According to the data of PLN Headquarter, each disposal sites has been supplemented with roof covering, concrete floor, drainage systems connected to fat, oil trap, eyewash, first aid, fire extinguisher, the hazardous waste separation based on each category, housekeeping and transformation labelling. The condition of hazardous storage facilities can be seen in Figure 10, which have been constructed in compliance with the regulations set forth by the Ministry of Environment and Forestry and have been granted official authorization. Nevertheless, several storages might require minor refinement in the following year owing to the age of warehouses and natural condition, like wind storm and sun exposures that causing rust stain roof.



Figure 10 Hazardous Waste Storage, 2024

## 2.6 Health and Safety Monitoring

The majority of activities at PLN UID Jatim have high risk level that may cause accident to workforce such as serious injuries, disability and death or fatality, allowing the health and safety aspects must be considered as first priority in every work stage. Near miss is any event that does not lead to harm but might potentially cause illness or injury. Unsafe action is any actions or behaviours that put the workers

at risk of harm, whilst unsafe condition is a condition where likely cause property damage or injury to the employees. Preventing the accidents, PLN Headquarter has rolled out an application called INSPEKTA to monitor several findings of health and safety aspects nonconformity for near miss, unsafe actions and unsafe conditions, including PLN’s employees and third parties, such as contractors. Each employee is given an account for reporting perilous incidents surrounding the work environment. The PLN Headquarter monitors the reports for delivering the solution.

Throughout 2024 the number of unsafe conditions at PLN UID Jatim were slightly over 95%, hitting 48,078 of 48,863 cases, 0.01% unsafe actions and a few near miss incidents like poor lighting resulting in a possible employee tripping, and almost falling over an undetected extension cord; however, there was no fatality was occurred in the given year as in Figure 11 below. Given the numerous reports of working in unsafe conditions, UID Jatim is taking action to improve safety management by implementing and supervising the implementation of Standard Operating Procedures (SOP) for each activity, including Network Maintenance and Low and Medium Voltage Substations by management; and field monitoring with report using INSPEKTA website. Investigating whether the reports have been improved, the employees could be seen those via the INSPEKTA provided in Figure 12. To maintain the curtailment of risks or accidents occur in the workplace, the third parties must comply standard regulation before working, such as filling working permit, having contractor safety management system (CSMS) certificate re on Figure 6, and wearing personal protective equipment as written in the contract documents.

#	Unit	Unsafe Act	Unsafe Condition	Nearmiss	Accident
	Unit Induk Distribusi Jawa Timur	13	43	0	0
	UP2D JATIM	9	176	0	0
	UP3 Banyuwangi	55	2.799	0	0
	UP3 Bojonegoro	43	707	0	0
	UP3 Gresik	9	1.570	0	0
	UP3 Jember	23	1.602	0	0
	UP3 Kediri	129	12.418	1	0
	UP3 Madiun	26	5.543	0	0
	UP3 Madura	18	3.256	1	0
	UP3 Malang	232	2.893	1	0
	UP3 Mojokerto	51	2.999	0	0
	UP3 Pasuruan	17	5.767	0	0
	UP3 Ponorogo	26	1.453	0	0
	UP3 Sidoarjo	9	703	0	0
	UP3 Situbondo	95	2.104	0	0
	UP3 Surabaya Barat	6	401	0	0
	UP3 Surabaya Selatan	13	1.826	0	0
	UP3 Surabaya Utara	8	1.818	0	0
	<b>Total</b>	<b>782</b>	<b>48.078</b>	<b>3</b>	<b>0</b>

Figure 11 INSPEKTA Monitoring Report, 2024

Unit	Open	Progress	Closed	RKAP	Rejected	Total (F/U * Faktor Kali)	Total Approved * 3	Effort Factor
UP2D JATIM	11	1	156	13	8	509	543	93.74 %
UP3 Banyuwangi	0	0	2852	0	2	8556	8556	100 %
UP3 Bojonegoro	0	0	750	0	1	2250	2250	100 %
UP3 Gresik	0	0	1559	12	8	4713	4713	100 %
UP3 Jember	0	0	1628	0	0	4884	4884	100 %
UP3 Kediri	48	7	12492	0	1	37490	37641	99.6 %
UP3 Madiun	8	0	5560	0	1	16680	16704	99.86 %
UP3 Madura	4	1	3261	9	3	9812	9825	99.87 %
UP3 Malang	25	3	3096	0	2	9294	9372	99.17 %
UP3 Mojokerto	3	0	3050	0	0	9150	9159	99.9 %
UP3 Pasuruan	0	0	5788	0	0	17364	17364	100 %
UP3 Ponorogo	0	0	1479	0	0	4437	4437	100 %
UP3 Sidoarjo	2	0	710	0	0	2130	2136	99.72 %
UP3 Situbondo	0	0	2200	0	0	6600	6600	100 %
UP3 Surabaya Barat	0	2	417	0	0	1255	1257	99.84 %
UP3 Surabaya Selatan	53	0	1774	13	0	5361	5520	97.12 %
UP3 Surabaya Utara	8	1	1807	0	10	5423	5448	99.54 %
Unit Induk Distribusi Jawa Timur	3	0	53	0	0	159	168	94.64 %

Figure 12 Improvement of INSPEKTA Monitoring Report, 2024

## 2.7 Training, Stakeholders Engagement and Grievance Redress Mechanism (GRM) Implementation

In PLN UID Jatim regular training and certification in Occupational Health and Safety – OHS aspects are General Occupational Safety and Health – AK3U, Electrical Occupational Safety and Health – AK3L, Fire Fighter, and Toxic and Hazardous Waste – PLB3, with participants from HSE Unit and general, defined by the Human Resources Development Unit following schedule from the HSE. PLN UID Jatim activities during National OHS Month in January – February usually is focused to the community by having socialisation on general health, medical check-up and blood transfusion, and emergency response simulations. Figure 13 illustrate the result of medical check-up for PLN employees and figure 14 for Emergency response simulations in handling impromptu floods in East Java, conducted jointly with the Regional Disaster Management Agency (BPBD) and PT PLN (Persero).

No	Temuan	Frekuensi		Jumlah Peserta	Persen Peserta	Persen Total, N=2115
		Temuan	Tanpa Temuan			
1	Gangguan Status Gizi	1731	379	2110	82%	81.8%
2	Gangguan Met. Lemak	1654	458	2112	78.3%	78.2%
3	Gangguan Tekanan Darah	1223	888	2111	57.9%	57.8%
4	Kelainan Gigi	1033	1078	2111	48.9%	48.8%
5	Gangguan Met. Asam Urat	799	1313	2112	37.8%	37.8%
6	Kelainan Urinalisa	680	1433	2113	32.2%	32.2%
7	Sindroma Metabolik	527	1560	2087	25.3%	24.9%
8	Gangguan Met. Glukosa	276	1833	2109	13.1%	13%
9	Gangguan Fungsi Hati	253	1859	2112	12%	12%

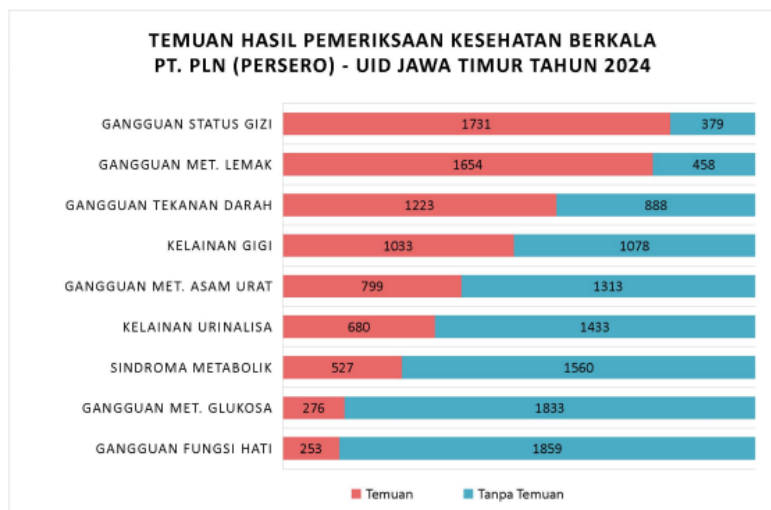


Figure 13 The top-nine major diseases within PLN employees, 2024



Figure 14 Emergency response simulations, 2024

Training for the surrounding community in UID Jatim have been applied under the Corporate Social Responsibility (CSR) program. PLN UID Jatim has sponsored many CSR program like Lali Gadget Village, Gosari Tour, Tanoker Ledokombo Educated Tour, Mandar Fish Market, Centra Durian Songgon, Tosari Village, as seen in Figure 15. At the end of the year, UID Jatim raised Kampung Lali Gadget located in Pagerngumbuk Village, Sidoarjo, by collaborating with local stakeholders to preserve Indonesian culture such as traditional games so that it succeeded in winning the 3rd place award in the civil society organization category in the SDGS Indonesia Action Awards Bappenas RI event. Kampung Lali Gadget

experienced an increase in revenue from 79 million rupiah to 140 million rupiah or 75%, this indicates that visitors who take quality packages at Kampung Lali Gadget have increased compared to 2023.



Figure 15 CSR Programs at PLN UID Jatim, 2024

The electricity construction may have a negative effect to human health due to the electromagnetic radiation. In case of cable uncovered insulations, people live near the pole might get an electric shock. Some customers in PLN UID Jatim had met problems with topping up the prepaid electricity tokens for kWh meter and some issued the power outage. During 2024 it has been recorded 897 times feeder interferences, as in the Figure 16 below. To overcome the issues, PLN UID Jatim has developed and implemented standard operational procedure (SOP) for addressing first-hand interferences problems, which were monitored and reported monthly to PLN UID Jatim by sub units. PLN workers attempted to alleviate the issues in a short time, preventing long black out timing and safeguarding electricity resilience to customers. In 2024, there were no grievance related to social and environmental aspect in PLN UID Jatim.

GGN PENYULANG (kali)		
NO	A R E A	REALISASI 2024
		KOMULATIF DEC
1	SURABAYA SELATAN	126
2	SURABAYA UTARA	59
3	M A L A N G	46
4	P A S U R U A N	95
5	K E D I R I	75
6	MOJOKERTO	58
7	M A D I U N	42
8	J E M B E R	43
9	BOJONEGORO	72
10	BANYUWANGI	25
11	PAMEKASAN	56
12	SITUBONDO	34
13	G R E S I K	28
14	SIDOARJO	55
15	SURABAYA BARAT	38
16	PONOROGO	45
<b>J U M L A H</b>		<b>897</b>

Figure 16 The Total of Interferences in 2024

In 2024, service-related grievances were predominantly caused by direct network disturbances, which accounted for 37.57% of classified outage cases. External factors also played a significant role, particularly animal interference (14.83%), third-party activities including network debris (7.80%), and vegetation-related issues such as trees (7.36%). Adverse weather conditions contributed 5.24% of reported incidents, while the remaining outages were associated with network components and equipment, including conductors, cables, jumpers, and protection devices. Overall, the distribution of outage causes indicates that most grievances were driven by external and environmental factors, followed by technical issues, providing a basis for targeted mitigation measures such as enhanced vegetation management, protection against animal interference, and preventive network maintenance.

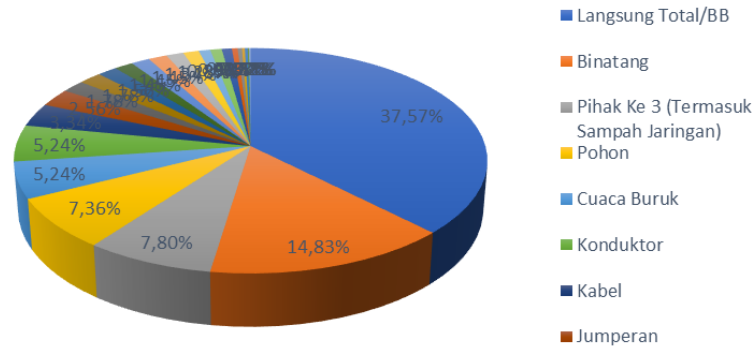


Figure 17 Composition of Electricity Service Outage Causes (2024)

PLN UID Jatim has facilitated customers to express faced-issues via call centre 123 and PLN Mobile, and get information about programmes in PLN by social media like Instagram, Facebook, and local radios, as shown in Figure 18 below.



Figure 18 PLN Mobile Application and Instagram

During the 2024 reporting period, PLN East Java Distribution received a total of 1,787,357 service outage reports submitted through the PLN Mobile application, which functions as one of the official grievance channels. All grievances recorded during the period were service-related complaints, primarily associated with electricity supply disruptions affecting service continuity and customer convenience. A limited portion of these records represents repeat outage reports, defined as follow-up submissions made by the same customers experiencing recurring service disruptions within the reporting period; these repeat reports do not indicate unresolved grievances, but rather reflect the frequency of service interruptions in certain locations or customer segments.

No	UP3	REALISASI LAPORAN PENGADUAN GANGGUAN BERULANG by PLN MOBILE (KUMULATIF) 2024	JUMLAH WO GANGGUAN PLN MOBILE (KUMULATIF) 2024
		DEC	DEC
1	SURABAYA SELATAN	3	76633
2	SURABAYA UTARA	4	34756
3	MALANG	8	136336
4	PASURUAN	5	166017
5	KEDIRI	3	173097
6	MOJOKERTO	2	130875
7	MADIUN	0	100153
8	JEMBER	7	152659
9	BOJONEGORO	45	180619
10	BANYUWANGI	3	84513
11	PAMEKASAN	25	247325
12	SITUBONDO	2	79374
13	GRESIK	3	31797
14	SIDOARJO	27	68648
15	SURABAYA BARAT	5	31259
16	PONOROGO	3	93296
<b>UID JATIM</b>		<b>145</b>	<b>1.787.357</b>

Figure 19 Summary of Repeat Outage Reports and Total Service Complaints via PLN Mobile in 2024

Each reported outage was followed up in accordance with established operational procedures and service standards. The effectiveness of grievance handling is measured through performance indicators, including Response Time (RPT) and Recovery Time (RCT), both measured in minutes. In 2024, the average RPT across PLN East Java Distribution reached 27.33 minutes, outperforming the annual target of 30 minutes, indicating that service repairs were generally completed within the established standard. Unit-level variations were observed, with faster repair performance in units such as UP3 Madiun and UP3 Gresik, while several units recorded RPT values closer to the service threshold, reflecting differences in network conditions and operational complexity.

In terms of service recovery, the average Recovery Time (RCT) across PLN East Java Distribution was 42.59 minutes, remaining well below the annual target of 60 minutes. While recovery times varied among operational units—ranging from faster recovery in UP3 Pasuruan and UP3 Madiun to relatively higher recovery times in UP3 Gresik—overall performance demonstrates that service restoration following outages was conducted within acceptable service standards. Variations in RCT are influenced by regional characteristics, network configuration, customer density, and the scale of affected areas.

Overall, the volume of service-related grievances, the presence of repeat outage reports, and the achievement of RPT and RCT targets collectively demonstrate the effectiveness of PLN's grievance redress mechanism in addressing customer complaints in a timely and systematic manner. Grievance and performance data are continuously used as inputs for operational evaluation and network reliability improvements, reflecting PLN's commitment to service quality, responsiveness, and continuous improvement in managing service-related stakeholder concerns.

## 2.8 Summary of Key Findings

During 2024, the key findings for PLN UID East Java are summarized as follows:

- Feeder interferences occurred 897 times, with the majority driven by direct network disturbances, external factors such as animals, third-party activities, vegetation, and adverse weather conditions.
- Service-related grievances were primarily recorded through the PLN Mobile application, with a total of 1,787,357 service outage reports submitted during the reporting period, reflecting the scale of operations and accessibility of the grievance channel.
- A portion of the reported grievances consisted of repeat outage reports, submitted by customers experiencing recurring service disruptions; these repeat reports do not indicate unresolved grievances, but rather reflect the frequency of outages in certain locations.
- Grievance handling performance remained within established service standards, with an average Response/Repair Time (RPT) of 27.33 minutes against a target of 30 minutes, and an average Recovery Time (RCT) of 42.59 minutes against a target of 60 minutes, indicating timely response and service restoration.
- Difficulties in topping up prepaid electricity credit were reported in certain areas due to geographical constraints, affecting customer accessibility to vending or digital top-up services.
- A total of 48,863 INSPEKTA findings were recorded, encompassing unsafe actions, unsafe conditions, and near-miss incidents, highlighting ongoing occupational safety and operational risk challenges.

## CHAPTER III

### Conclusion and Recommendation

This ESMP Monitoring Report presents the status of environmental monitoring and mitigation measures undertaken by PLN UID Jatim. The conclusion drawn from this ESMP Monitoring Report were:

- The project is generally being effectively implemented on sites with appropriate resources and capability to accomplish the plan;
- The periodic environmental monitoring and management during the operation phase, as required by the UKL-UPL, has been conducted frequently and with no major deficiencies to the applicable regulation and AIB safeguard standards;
- The project is considered to comply with most of the commitments stated in the UKL-UPL and HSE requirements with findings regarding the condition of transformers warehouses in several units of PLN UID Jatim. Though there have been zero work accidents, the potential for harm remains high refer to data from INSPEKTA.

The recommendation for improving the environmental, social, health, and safety performance within the reporting period is as follows:

- Elevating HSE performance, the unit monitors all the work activities both in the sites and office by conducting management inspection and safety briefing, fulfilling working permit, wearing standard PPE, putting up warning or attention signs, and having CSMS certificate;
- To continue the frequency of monitoring as required in the UKP-UPL;
- To continue meaningful communication and consultation with the community and application of the PLN's established Grievance Redress Mechanism;
- To maintain the hazardous waste management and assure the hazardous waste temporary storage complied with the technical standards;
- To minimize network interferences and customer's complaints.

## Appendix 1 : UID Jatim's Detailed Business Location

Table 4 UID Jatim's Detailed Business Location

No.	Unit Business	Address
<b>1</b>	<b>UID Jawa Timur</b>	Jl. Embong Trengguli No. 19-21, Kota Surabaya Coordinate: -7.265454263357005, 112.74332761476165.
<b>2</b>	<b>UP2D Jawa Timur</b>	Jl. Embong Wungu No. 4, Kota Surabaya Coordinate: -7.26534840972209, 112.74320004245534
2.1	Central Distribution Control Center (DCC Tengah)	Jl. Embong Wungu No. 4, Kota Surabaya Coordinate: -7.26534840972209, 112.74320004245534
2.2	West Distribution Control Center (DCC Barat)	Sambijajar, Kec. Kertosono, Kabupaten Nganjuk Coordinate: -7.614819900635506, 112.0980971305032.
2.3	East Distribution Control Center (DCC Timur)	Plerenan, Sumberkedawung, Leces, Probolinggo Coordinate: -7.848135894642564, 113.22891162925504
<b>3</b>	<b>UP2K Jawa Timur</b>	Jl. Embong Trengguli No. 19-21, Kota Surabaya Coordinate: -7.265454263357005, 112.74332761476165.
<b>4</b>	<b>UP3 Banyuwangi</b>	Jl. Nusantara No. 1, Kec. Banyuwangi, Kab. Banyuwangi Coordinate: -8.209737555785193, 114.37792552837466
4.1	ULP Banyuwangi Kota	Jl. Nusantara No. 1, Kec. Banyuwangi, Kab. Banyuwangi Coordinate: -8.209737555785193, 114.37792552837466
4.2	ULP Rogojampi	Jl. Nusantara No. 1, Kec. Banyuwangi, Kab. Banyuwangi Coordinate: -8.209737555785193, 114.37792552837466
4.3	ULP Genteng	Jl. Diponegoro No. 345, Kec. Gambiran, Kab. Banyuwangi Coordinate: -8.371472824225346, 114.1461648517396
4.4	ULP Muncar	Jl. Brawijaya No. 60, Kec. Muncar, Kab. Banyuwangi, Coordinate: -8.435433993786555, 114.32356888516476
4.5	ULP Jajag	Jl. Ahmad Yani No. 47, Kec. Gambiran, Kab. Banyuwangi, Coordinate: -8.442458210599677, 114.18045157182357
<b>5</b>	<b>UP3 Bojonegoro</b>	Jl. Teuku Umar No. 3, Kec. Bojonegoro, Kab. Bojonegoro Coordinate: -7.152787529513715, 111.89108325409164
5.1	ULP Babat	Jl. Raya Pantura No. 151, Kec. Babat, Kab. Lamongan Coordinate: -7.1001196050351405, 112.19220438349588
5.2	ULP Bojonegoro	Jl. KH. Hasyim Ashari No. 3, Kec. Bojonegoro, Kab. Bojonegoro Coordinate: -7.150819736457851, 111.87902104112098
5.3	ULP Brondong	Jl. Raya Paciran, Km. 35, Kec. Paciran, Kab. Lamongan Coordinate: -6.868077634887189, 112.332823332428
5.4	ULP Jatirogo	Jl. Panglima Sudirman, Desa Sadang, Kec. Jatirogo, Kab. Tuban Coordinate: -6.883050864885932, 111.65975543222176
5.5	ULP Lamongan	Jl. Veteran, Kec. Lamongan, Kabupaten Lamongan Coordinate: -7.103517296921866, 112.4237178453836
5.6	ULP Padangan	Jl. Bojonegoro-Ngawi, Kec. Padangan, Kab. Bojonegoro Coordinate: -7.166103463800881, 111.61065024093234
5.7	ULP Sumber Rejo	Jl. Imam Bonjol No. 3, Kec. Bojonegoro, Kab. Bojonegoro Coordinate: -7.17062743726624, 112.02663197235925
5.8	ULP Tuban	Jl. AKBP Suroko No. 38, Kebonsari, Kec. Tuban, Kab. Tuban Coordinate: -6.902854288535241, 112.06199932947025
<b>6</b>	<b>UP3 Gresik</b>	Jl. DR. Wahidin Sudiro Husodo No. 134, Kec. Gresik, Kab. Gresik Coordinate: -7.162665067494151, 112.63250181458187
6.1	ULP Bawean	Jl. Pendidikan, Kec. Sangkapura, Kab. Gresik

Table 5 UID Jatim's Detailed Business Location

No.	Unit Business	Address
		Coordinate: -5.84856624754764, 112.66068972757812
6.2	ULP Benjeng	Jl. Raya Munggugianti No. 414, Kec. Benjeng, Kab. Gresik Coordinate: -7.263472579117247, 112.49512920343646
6.3	ULP Giri	Jl. Raden Santri No. 29, Kec. Gresik, Kab. Gresik Coordinate: -7.154313198786633, 112.6563626944322
6.4	ULP Sedayu	Jl. Raya Pahlawan No. 26, Kec. Sidayu, Kab. Gresik Coordinate: -6.998295366697616, 112.56458210077783
<b>7</b>	<b>UP3 Jember</b>	Jl. Gajah Mada No. 198, Kec. Kaliwates, Kab. Jember Coordinate: -8.177207742793087, 113.67795546431344
7.1	ULP Ambulu	Jl. Manggar, Kec. Tegalsari, Kab. Jember Coordinate: -8.344344482511081, 113.59727725647673
7.2	ULP Jember Kota	Jl. PB Sudirman No. 114, Kec. Patrang, Kab. Jember Coordinate: -8.142771503204608, 113.71229068979159
7.3	ULP Kalisat	Jl. DR. Wahidin No. 20, Kec. Kalisat, Kab. Jember Coordinate: -8.141329213414986, 113.81742034392617
7.4	ULP Kencong	Jl. R.A. Kartini No. 219, Kec. Kencong, Kab. Jember Coordinate: -8.291885803695745, 113.39251894575689
7.5	ULP Klakah	Jl. Raya Klakah, Kec. Klakah, Kab. Lumajang Coordinate: -7.999309423767122, 113.24939285658911
7.6	ULP Lumajang	Jl. Jendral Ahmad Yani No. 177, Kec. Lumajang, Kab. Lumajang Coordinate: -8.100833551008531, 113.23191384362772
7.7	ULP Rambipuji	Jl. Dharmawangsa No. 42, Kec. Rambipuji, Kab. Jember, Coordinate: -8.207377193324266, 113.60885269962532
7.8	ULP Tanggul	Jl. Raya Lumajang-Jember, Kec. Tanggul, Kab. Jember Coordinate: -8.156517701456611, 113.44070657415432
7.9	ULP Tempeh	Jl. Raya Tempeh, Kec. Lumajang, Kab. Lumajang Coordinate: -8.210746284237374, 113.17061359412766
<b>8</b>	<b>UP3 Kediri</b>	Jl. Basuki Rahmat No. 1, Kec. Kota Kediri, Kota Kediri Coordinate: -7.813349361633385, 112.01428410981475
8.1	ULP Blitar	Jl. Ahmad Yani No. 21, Kec. Kepanjenkidul, Kota Blitar Coordinate: -8.09830095225866, 112.17152498152501
8.2	ULP Campurdarat	Jl. Kanigoro No. 7, Kec. Campur Darat, Kab. Tulungagung Coordinate: -8.16205526178975, 111.85835924954077
8.3	ULP Grogol	Jl. Raya Gringsing, Kec. Grogol, Kab. Kediri Coordinate: -7.745965862609262, 111.96759495672836
8.4	ULP Kediri Kota	Jl. Basuki Rahmat No. 1, Kec. Kota Kediri, Kota Kediri Coordinate: -7.813349361633385, 112.01428410981475
8.5	ULP Ngadiluwih	Jl. Perintis Kemerdekaan No. 98, Kec. Ngadiluwih, Kab. Kediri Coordinate: -7.877881958721953, 111.99927051952601
8.6	ULP Ngunut	Jl. Raya Pulosari, Kec. Ngunut, Kab. Tulungagung Coordinate: -8.094780954570098, 111.99609268484717
8.7	ULP Pare	Jl. Pb. Sudirman No. 25, Kec. Pare, Kab. Kediri Coordinate: -7.766605119403202, 112.19161482759446
8.8	ULP Srengat	Dandong, Kec. Srengat, Kab. Blitar Coordinate: -8.064783323745175, 112.07595950322442
8.9	ULP Sutojayan	Jl. Raya Utara Lodoyo, Kec. Sutojayan, Kab. Blitar Coordinate: -8.160677685063103, 112.21745167745904
8.10	ULP Tulungagung	Jl. Kapten Kasihin No. 55, Kec. Tulungagung, Kab. Tulungagung

Table 6 UID Jatim's Detailed Business Location

No.	Unit Business	Address
		Coordinate: -8.045498958925327, 111.90019677264871
8.11	ULP Wlingi	Jl. Panglima Sudirman No. 2, Kec. Wlingi, Kab. Blitar Coordinate: -8.084299099298404, 112.31246578527994
<b>9</b>	<b>UP3 Madiun</b>	Jl. MT Haryono No. 30, Kec. Taman, Kota Madiun Coordinate: -7.634100661917686, 111.53292954451179
9.1	ULP Caruban	Jl. Raya Caruban, Kec. Wonoasri, Kab. Madiun Coordinate: -7.549113371948408, 111.63826625659378
9.2	ULP Dolopo	Jl. Raya Dolopo, Kec. Dolopo, Kab. Madiun Coordinate: -7.747105415341901, 111.52845006394058
9.3	ULP Madiun Kota	Jl. MT Haryono No. 30, Kec. Taman, Kota Madiun Coordinate: -7.634100661917686, 111.53292954451179
9.4	ULP Magetan	Dusun Magetan, Kec. Magetan, Kab. Magetan Coordinate: -7.6552068498082795, 111.32861257417176
9.5	ULP Mantingan	Jl. Raya Mantingan No. 44, Kec. Mantingan, Kab. Ngawi Coordinate: -7.3647666630455975, 111.15475017220473
9.6	ULP Maospati	Jl. Raya Maospati Solo No. 51, Kec. Maospati, Kab. Magetan Coordinate: -7.606512910522695, 111.45209381466968
9.7	ULP Ngawi	Jl. Jaksa Agung Suprpto No. 37, Kec. Ngawi, Kab. Ngawi Coordinate: -7.400581676389934, 111.44675988375208
<b>10</b>	<b>UP3 Malang</b>	Jl. Jenderal Basuki Rahmat No.100, Kec. Klojen, Kota Malang Coordinate: -7.97442703617857, 112.63023906108599
10.1	ULP Batu	Jl. Trunojoyo, Songgokerto, Kec. Batu, Kota Batu Coordinate: -7.865585158352954, 112.50941695659945
10.2	ULP Blimbing	Jl. Raya Mangliawan No. 3 RT.04 RW.III, Kel. Mangliawan, Kec. Pakis, Kab. Malang Coordinate: -7.950651702598757, 112.66810051456167
10.3	ULP Bululawang	Jl. Raya Bululawang No. 13, Kec. Bululawang, Kab. Malang Coordinate: -8.068763779167679, 112.64145566715918
10.4	ULP Dampit	Jl. Gunung Jati No.11, Kec. Dampit, Kab. Malang Coordinate: -8.21365159343354, 112.75585128530828
10.5	ULP Dinoyo	Jl. MT. Haryono, Kec. Lowokwaru, Kota Malang Coordinate: -7.945936511450879, 112.61493362583593
10.6	ULP Gondanglegi	Jl. Pangeran Diponegoro No. 16, Gondanglegi, Kab. Malang Coordinate: -8.09877197287004, 112.63715842979494
10.7	ULP Kebon Agung	Jl. Satsui Tubun No. 28, Kec. Sukun, Kota Malang Coordinate: -8.02006251422973, 112.62995934613713
10.8	ULP Kepanjen	Jl. Panji No. 1, Kec. Kepanjen, Kab. Malang Coordinate: -8.133630353162488, 112.5750386579352
10.9	ULP Malang Kota	Jl. Jenderal Basuki Rahmat No.100, Kec. Klojen, Kota Malang Coordinate: -7.974536357943166, 112.63006150485302
10.11	ULP Lawang	Jl. Pungkur Argo No. 12, Kec. Lawang, Kab. Malang Coordinate: -7.835663586523679, 112.69534985649997
10.12	ULP Singosari	Jl. Kertanegara, Kec. Singosari, Kab. Malang Coordinate: -7.889262592687962, 112.66748286295038
10.13	ULP Sumberpucung	Jl. Raya Karangates-Kepanjen, Kec. Sumberpucung, Kab. Malang Coordinate: -8.159836557246502, 112.45626140679877
10.14	ULP Tumpang	Jl. Raya Tulus Ayu No.15, Kec. Tumpang, Kab. Malang

Table 7 UID Jatim's Detailed Business Location

No.	Unit Business	Address
		Coordinate: -8.018908812528908, 112.76379056263207
<b>11</b>	<b>UP3 Mojokerto</b>	Jl. R.A Basuni No. 69, Kec. Sooko, Kab. Mojokerto Coordinate: -7.494232557836998, 112.42540026807116
11.1	ULP Jombang	Jl. KH. Wachid Hasyim No. 73, Kec. Jombang, Kab. Jombang Coordinate: -7.54464243104677, 112.23731199435669
11.2	ULP Kertosono	Jl. P.B. Sudirman 18, Kec. Kertosono, Kab. Nganjuk, Coordinate: -7.600452572164896, 112.10122420013502
11.3	ULP Mojoagung	Jl. Raya Veteran No. 347 Miagan, Kec. Mojoagung, Kab. Jombang Coordinate: -7.56799553938388, 112.3575532123227
11.4	ULP Mojokerto	Jl. Jend. A. Yani No.6, Kec. Magersari, Kab. Mojokerto Coordinate: -7.463760306857156, 112.4350395798463
11.5	ULP Mojosari	Jl. Pemuda No. 78, Kota Mojosari, Kab. Mojokerto Coordinate: -7.508646520426993, 112.56021825121272
11.6	ULP Nganjuk	Jl. Dr. Sutomo No.54, Kec. Nganjuk, Kab. Nganjuk Coordinate: -7.604327473890022, 111.8976572945858
11.7	ULP Ngoro	Jl. Suropati No.5, Kec. Ngoro, Kab. Jombang Coordinate: -7.687914703103292, 112.27196608564918
11.8	ULP Pacet	Jl. Komando Hayam Wuruk No. 25, Kec. Pacet, Kab. Mojokerto Coordinate: -7.657151715712359, 112.53654580414177
11.9	ULP Ploso	Jl. Raya Ploso-Babat No.3, Kec. Ploso, Kab. Jombang Coordinate: -7.4407364725480925, 112.22595155730531
11.10	ULP Warujayeng	Jl. Basuki Rahmad No. 17A, Kec. Warujayeng, Kab. Nganjuk Coordinate: -7.625556351257883, 112.02216281232326
<b>12</b>	<b>UP3 Pamekasan</b>	Jl. Jokotole No. 127A, Kec. Pademawu, Kab. Pamekasan Coordinate: -7.160881910760965, 113.49226388124816
12.1	ULP Ambunten	Jl. KH. Hasyim Asyari, Kec. Ambunten, Kab. Sumenep Coordinate: -6.886261260548867, 113.74041215464696
12.2	ULP Bangkalan	Jl. Letnan Mestu No.4, Kec. Bangkalan, Kab. Bangkalan Coordinate: -7.026136881367906, 112.75044598348352
12.3	ULP Blega	Jl. Raya Blega No. 30, Kec. Blega, Kab. Bangkalan Coordinate: -7.120859619325816, 113.06835788348417
12.4	ULP Kamal	Jl. Trunojoyo No. 27, Kec. Kamal, Kab. Bangkalan Coordinate: -7.149267470893375, 112.71477468374427
12.5	ULP Kep. Kangean	Jl. Sriwijaya, Kec. Arjasa, Kab. Sumenep Coordinate: -6.858621350732034, 115.28849982357747
12.6	ULP Ketapang	Jl. Raya Ketapang-Banyuates, Kec. Ketapang, Kab. Sampang Coordinate: -6.895254765391785, 113.2813934546471
12.7	ULP Pamekasan	Jl. Kesehatan, Kec. Pamekasan, Kab. Pamekasan Coordinate: -7.157370154531353, 113.48541478348427
12.8	ULP Sampang	Jl. Trunojoyo No.63, Kec. Sampang, Kab. Sampang Coordinate: -7.200470821917897, 113.25090094115596
12.9	ULP Sumenep	Jl. Urip Sumoharjo, Kec. Kotasumenep, Kab. Sumenep Coordinate: -7.013264023747347, 113.86941699697641
12.10	ULP Waru	Jl. Raya Blaban No. 2, Kec. Barumarmar, Kab. Pamekasan Coordinate: -6.900613888212766, 113.48532696063498
<b>13</b>	<b>UP3 Pasuruan</b>	Jl. Panglima Sudirman No. 69, Kec. Purworejo, Kota Pasuruan, Coordinate: -7.6525547,112.8979683

Table 8 UID Jatim's Detailed Business Location

No.	Unit Business	Address
13.1	ULP Bangil	Jl. Mangga No. 68, Kec. Bangil, Kab. Pasuruan Coordinate: -7.602592094571757, 112.77662021404068
13.2	ULP Gondang Wetan	Jl. Raya Kejayan No. 144, Kec. Kejayan, Kab. Pasuruan Coordinate: -7.6960633, 112.8776460
13.3	ULP Grati	Jl. Raya Kedung Bako, Km.8, Kec. Rejoso, Kab. Pasuruan Coordinate: -7.6274, 112.945267
13.4	ULP Kraksaan	Jl. Rengganis No. 99, Kec. Kraksaan, Kab. Probolinggo, Coordinate: -7.759774, 113.4147996
13.5	ULP Pandaan	Jl. Raya Kasri No. 48 Kec. Pandaan, Kab. Pasuruan Coordinate: -7.6500302, 112.68816708
13.6	ULP Pasuruan	Jl. Diponegoro, No. 1, Kec. Panggungrejo, Kota Pasuruan, Coordinate: -7.6428585, 112.9084763
13.7	ULP Prigen	Jl. Taman Wisata No. 543, Kec. Tretes, Kab. Prigen Coordinate: -7.696333, 112.631114
13.8	ULP Probolinggo	at Jl. Dr Sutomo No. 60 Kec. Mayangan, Kota Probolinggo Coordinate: -7.7498015, 113.2085234
13.9	ULP Sukorejo	Jl Raya Buluagung No. 56, Kec. Purwosari, Kab. Pasuruan Coordinate: -7.7391611, 112.7270698
<b>14</b>	<b>UP3 Ponorogo</b>	Jl. Arif Rachman Hakim No. 8, Kec. Ponorogo, Kab. Ponorogo Coordinate: -7.844953, 111.476346
14.1	ULP Balong	Jl. Jend. Sudirman No.12, Kec. Balong, Kab. Ponorogo Coordinate: -7.951655, 111.438792
14.2	ULP Pacitan	Jl. Jend. A. Yani No.94, Kec. Pacitan, Kab. Pacitan Coordinate: -8.195307268696597, 111.09659711351047
14.3	ULP Trenggalek	Jl. Dr Sutomo No. 34, Kec. Ponorogo, Kab. Ponorogo Coordinate: -7.868520, 111.472420
14.4	ULP Trenggalek	Jl. Kis Mangunsarkoro No.7, Kec. Trenggalek, Kab. Trenggalek Coordinate: 8.049987, 111.717096
<b>15</b>	<b>UP3 Sidoarjo</b>	Jl. Ahmad Yani No.47-49, Kec. Sidoarjo, Kab. Sidoarjo Coordinate: -7.4494654260421305, 112.71825041618933
15.1	ULP Krian	Jl. Ki Hajar Diwantoro No. 11, Kec. Krian, Kab. Sidoarjo Coordinate: -7.4112275150134685, 112.57778286653408
15.2	ULP Porong	Jl. Raya Pangkemi No. 18, Kec. Tulangan, Kab. Sidoarjo Coordinate: -7.493563078315474, 112.67112643179192
15.3	ULP Sidoarjo Kota	Jl. Ahmad Yani No.47-49, Kec. Sidoarjo, Kab. Sidoarjo Coordinate: 7.4494654260421305, 112.71825041618933
<b>16</b>	<b>UP3 Situbondo</b>	Jl. Cempaka No. 35, Kec. Panarukan, Kab. Situbondo Coordinate: -7.7118379307024005, 113.99725708809487
16.1	ULP Asembagus	Jl. Raya Banyuputih, Kec. Asembagus, Kab. Situbondo Coordinate: -7.7501093, 114.2268099
16.2	ULP Besuki	Jl. Gunung Ijen, Kec. Besuki, Kab. Situbondo Coordinate: -7.7379564, 113.6907781
16.3	ULP Bondowoso	Jl. Kolonel Sugiono, Kec. Bondowoso, Kab. Bondowoso Coordinate: -7.9176386, 113.8294858
16.4	ULP Panarukan	Krajan Timur, Kec. Panarukan, Kab. Situbondo Coordinate: -7.7118379307024005, 113.99725708809487
16.5	ULP Wonosari	Jl. Raya Situbondo, Tapen, Kab. Bondowoso Coordinate: -7.8759219, 113.9118142

Table 9 UID Jatim's Detailed Business Location

No.	Unit Business	Address
<b>17</b>	<b>UP3 Surabaya Barat</b>	Jl. Taman Bar. No.48, Taman, Kab. Sidoarjo Coordinate: -7.353419040539072, 112.69495930002113
17.1	ULP Menganti	Jl. Raya Bringkang, Pakupari, Kec. Menganti, Kab. Gresik Coordinate: -7.301472425139031, 112.56473352710175
17.2	ULP Karangpilang	Jl. Raya Mastrip 114, Kec. Karang Pilang, Kota Surabaya Coordinate: -7.33461753541963, 112.70449370451142
17.3	ULP Taman	Jl. Raya Geluran, Kec. Taman, Kabupaten Sidoarjo, Coordinate: -7.301467857739009, 112.56473582946957
<b>18.</b>	<b>UP3 Surabaya Selatan</b>	Jl. Ngagel Timur No. 14, Kec. Gubeng, Kota Surabaya Coordinate: -7.288610156975076, 112.7498796145707
18.1	ULP Darmo Permai	Jl. Raya Darmo Permai Utara No. 5, Kec. Dukuhpakis, Kota Surabaya Coordinate: -7.3014689995884074, 112.5647369806547
18.2	ULP Dukuh Kupang	Jl. Raya Dukuh Kupang No. 157, Kec. Sawahan, Kota Surabaya Coordinate: -7.301476992537063, 112.5647392830248.
18.3	ULP Gedangan	Jl. Sawo Tratat No.Km.15, Kec. Gedangan, Kab. Sidoarjo Coordinate: -7.301473566988522, 112.56473467828523
18.4	ULP Ngagel	Jl. Ngagel Timur No. 14, Kec. Gubeng, Kota Surabaya Coordinate: -7.287741533971661, 112.74975791531983
18.5	ULP Rungkut	Jl. Rungkut Industri VIII No. 27, Kec. Tenggilis Mejoyo, Kota Surabaya Coordinate: -7.335709309477891, 112.75043580097099
<b>19</b>	<b>UP3 Surabaya Utara</b>	Jl. Gemblongan No. 64, Kec. Bubutan, Kota Surabaya, Coordinate: -7.253080772597481, 112.73701372775925
19.1	ULP Embong Wungu	Jl. Dr. Soetomo No.42, Kec. Tegalsari, Kota Surabaya Coordinate: -7.281183613423015, 112.73995877107843
19.2	ULP Indrapura	Jl. Indrapura No. 48, Kec. Krembangan, Kota Surabaya Coordinate: -7.233849, 112.7310867
19.3	ULP Kenjeran	Jl. Kedinding Lor No.25, Kec. Kenjeran, Kota Surabaya Coordinate: -7.2658058, 112.7080988
19.4	ULP Perak	Jl. Tanjung Sadari No. 82, Kec. Krembangan, Kota Surabaya Coordinate: -7.2251115, 112.7249496
19.5	ULP Ploso	Jl. Ploso Tim. III No.1, Ploso, Kec. Tambaksari, Kota Surabaya Coordinate: -7.2567659, 112.7698973
19.6	ULP Tandes	Jl. Margomulyo No. 44, Kec. Asemrowo, Kota Surabaya Coordinate: -7.2365432, 112.6824163

Appendix 2 : ESMP Matrix

No	Impact Category	Impact Activities/Resources	The Negative Impact Potential	Management Efforts (ME)	Monitoring			
					Location	Frequency and Time	Performance Indicators	Management Institutions
<b>New Feeders Construction for New GI Operations (Improved JTM Reliability)</b>								
<b>A</b>	<b>Pre-Construction/Planning</b>							
1	Ecological, physical, social (land use)	Medium Voltage Power Network development plan (SKTM), which consists of:  1. The route and plan the length of SKTM; 2. Trees cutting that cannot be avoided; 3. Trees under the <i>Right of Way</i> (ROW) that must be trimmed	There are no significant potential negative impacts	In designing the route:  1. avoid cutting trees on both public and private land;  2. make preliminary agreements with potentially affected parties including private land owners whose land has to be used;  3. socialization about the ROW	The entire path of the project	F: One time W: Initial Planning	1. Routings to avoid private land, forestry;  2. Evidence of agreement with land and trees owners;  3. Socialization notes on ROW safety based on safe distances according to the PLN board of directors' regulations;  4. There are no reports of landslides at the pole location	Implementati on Unit
		Some of the JTM routes and poles are on agricultural land, forest areas, part of houses / private land, so that the minimum ROW	Potential negative impacts: increased disturbance from tree branches, buildings on the ROW	4. In order to prevent erosion and poor foundations: 1) investigate the location of piles along the SKTM route; 2) ensure				Implementati on Unit

No	Impact Category	Impact Activities/Resources	The Negative Impact Potential	Management Efforts (ME)	Monitoring			
					Location	Frequency and Time	Performance Indicators	Management Institutions
		distance of 3 meters cannot be fulfilled		that the demolition is done properly to avoid landslides				
		PLN installation Disassembly at SKTM	The possibility of erosion and landslides in the area					
		SKTM development plans in cultural heritage areas or areas where there are potential discoveries of new historical sites	The SKTM development plan has the potential to disturb and damage cultural heritage objects	<p>1. Obtain a permit or recommendation from the cultural heritage management authority</p> <p>2. PLN and the Contractor implement cultural heritage handling procedures for the distribution network</p>		<p>F: One time</p> <p>W: Initial Planning</p>	<p>1. Permission / recommendation from the official authority</p> <p>2. Consultations note with community leaders and relevant authorities</p>	Implementation Unit
2	Social	Preparation of ROW lines and pole locations	Dissatisfaction relates to land use for the	Avoid the use of private land, and indigenous group areas by PLN	ROW path	<p>F: one time</p> <p>W: The Beginning</p>	1. The existence of a clear PLN ROW route and as far as possible	Implementation Unit

No	Impact Category	Impact Activities/Resources	The Negative Impact Potential	Management Efforts (ME)	Monitoring			
					Location	Frequency and Time	Performance Indicators	Management Institutions
			ROW, location of poles and substations	Consultation and socialization to land owners and community leaders by PLN (and the Contractor)	ROW lines, poles and substations	of The Planning	avoid the use of private land and indigenous group areas  2. Consultation's documentation with affected communities explaining the ROW restrictions	
				PLN makes land use agreements with land owners		F: As needed until all agreements with land owners are collected W: Planning	Documentation of land use agreements (according to point A. 1)	
<b>B</b>	<b>Construction</b>							

No	Impact Category	Impact Activities/Resources	The Negative Impact Potential	Management Efforts (ME)	Monitoring			
					Location	Frequency and Time	Performance Indicators	Management Institutions
1	OHS - Worker and Community Health and Safety	Excavation for cables, holes for poles, erecting piles, laying ground cables, installing TM construction and supporting accessories	Negative impacts on safety, health and social of construction workers on workers and society	<ol style="list-style-type: none"> <li>1. CSMS certified contractor</li> <li>2. Identification of hazards from work (IBPR) / (job safety analysis)</li> <li>3. Work permit for hazardous work</li> <li>4. Compliance with SMK3 Government Regulation No. 50 of 2012</li> <li>4. Implement SOP in accordance with the work</li> <li>5. signs Installation in accordance with the guidelines</li> <li>6. Officers and supervisors are equipped with standard Personal Protective Equipment (PPE)</li> <li>7. Stop Working Authority Inspection</li> <li>8. LOTO procedure</li> </ol>	At each project site, along the ROW	F: Once W: the beginning of construction	<ol style="list-style-type: none"> <li>1. No work accident</li> <li>2. Danger signboard and safety of dug holes due to the construction</li> <li>2. Records of public concern inspections by contractors</li> <li>3. There is no reprimand or termination of work from the officer Stop working authority</li> </ol>	The contractor supervised by the implementation Unit

No	Impact Category	Impact Activities/Resources	The Negative Impact Potential	Management Efforts (ME)	Monitoring			
					Location	Frequency and Time	Performance Indicators	Management Institutions
				9. The contractor maintains the required ethics during the construction phase				
2	Social and Traffic	<p>Materials and equipment transportation using a vehicle that is not feasible or exceeds the capacity of the vehicle / road or the speed exceeds the allowable limit</p> <p>Materials placement, equipment up on the road when the installation work in progress will disrupt traffic</p>	<p>The possibility of traffic disturbances such as: congestion, road damage, as a result of spilled construction material during transportation, the spread of soil, gravel and project materials on the body of the road.</p> <p>Construction waste spread on the road</p>	<p>1. Placing traffic control officers at the project site;</p> <p>2. Install information signs that work is in progress</p> <p>3. Prevent scattered construction materials on the road</p> <p>4. Provide a special location for placing the materials (not on the road)</p> <p>5. Comply with traffic regulations and instructions for orderly use of roads NO. 004 / T / BNKT / 1990</p>			<p>1. Information on outage plans to customers</p> <p>2. Work in progress information signboard</p> <p>3. There is a special location for placing the materials</p> <p>4. No traffic disruption</p> <p>5. Construction material does not contaminate the body of the road</p>	
<b>C</b>	<b>Operational</b>							

No	Impact Category	Impact Activities/Resources	The Negative Impact Potential	Management Efforts (ME)	Monitoring			
					Location	Frequency and Time	Performance Indicators	Management Institutions
1	OHS - Worker and Community Health and Safety	The electric voltage generated from the operating power grid	Negative impacts on safety, health and social impact on surrounding communities and workers	1. Perform a periodic inspection 2. Installing a danger sign on the PLN assets that have a voltage 3. Socialization to the public regarding safe distances	At each project site, along the ROW	F: Through-out operations W: Through-out Operations	1. There are no accidents reports on the general public and the workers 2. Inspection notes 3. Documentation of socialization to the general public regarding safe distances	Implementati on Unit
<b>Old Material Replacement (JTM Reliability Improvements)</b>								
<b>A</b>	<b>Pre-Construction/Planning</b>							
1	-	Inspection of existing network	There is no potential negative impact	-	-	-	-	-

**ESMP Matrix**

No	Impact Category	Impact Activities/Resources	The Negative Impact Potential	Management Efforts (ME)	Monitoring			
					Location	Frequency and Time	Performance Indicators	Management Institutions
<b>B</b>	<b>Construction</b>							
1	OHS - Worker and Community Health and Safety	Replacement of TM construction and accessories	Disturbance to customers due to power outages and potential work accidents	<ol style="list-style-type: none"> <li>1. Provide information on outage plans to customers through social media or letters to related parties;</li> <li>2. Carry out load maver scenarios before and after the work</li> <li>3. CSMS certified contractor</li> <li>4. Occupational hazard identification (IBPPR) /JSA</li> <li>5. Work permit for hazardous work</li> <li>6. Compliance with SMK3 Government Regulation No. 50 of 2012</li> <li>7. Implement SOP in accordance with the work</li> <li>8. signs Installation in accordance with the guidelines</li> <li>9. Officers and supervisors are equipped with</li> </ol>	The entire existing distribution network	F: Once W: the beginning of construction	<ol style="list-style-type: none"> <li>1. Information on outage plans to customers</li> <li>2. Project implementation signs</li> <li>3. There are no reports of work accidents</li> <li>4. There is no reprimand or termination of work from the officer Stop working authority</li> </ol>	UID

No	Impact Category	Impact Activities/Resources	The Negative Impact Potential	Management Efforts (ME)	Monitoring			
					Location	Frequency and Time	Performance Indicators	Management Institutions
				<p>standard Personal Protective Equipment (PPE)</p> <p>10. Stop Working Authority Inspection</p> <p>11. LOTO procedure</p>				
2	Electronic waste	Replacement of damaged equipment (Returning the old materials)	<p>1. The damaged (old) material is left at the work site so that it has the potential to pollute the environment</p> <p>2. The damaged (old) material is taken by the workers so that the potential for contamination cannot be controlled</p> <p>3. The damaged (old) material storage is not neatly arranged so that it has the potential to pollute the environment</p>	<p>1. Carry out orderly administrative actions and control the amount of material being unloaded and returned by arranging the ATTB warehouse in accordance with the Warehouse SOP</p> <p>2. Implementing the Hazardous Waste Management SOP,</p> <p>3. Preventive Procedures Cross-contamination PCB,</p> <p>4. Procedure for Managing Used Materials and Non-B3 Waste</p>	The entire existing distribution network	F: Once W: when the construction is finished	<p>1. Notes on the implementation of replacement of tools and materials (in and out of the warehouse)</p> <p>2. The recording damaged equipment / materials (ATTB) results in the ATTB warehouse management system</p> <p>3. There are no reports of environmental pollution</p>	Implementation Unit

No	Impact Category	Impact Activities/Resources	The Negative Impact Potential	Management Efforts (ME)	Monitoring			
					Location	Frequency and Time	Performance Indicators	Management Institutions
				5. Procedure for Handling Spilled Oil / Transformer Oil				
<b>C</b>	<b>Operational</b>							
1	Electronic waste	Handling, storage and disposal of used materials	Used material stacking in the warehouse	1. Arrangement in the warehouse according to the type of material 2. Used material auction 3. Implementing the Hazardous Waste Management SOP 4. Preventive Procedures PCB Cross Contamination 5. Procedure for Managing Used Materials and Non-B3 Waste 6. Procedure for Handling Spilled Oil / Transformer Oil	Warehouse/Storage	F: During operation W: During operational phase	1. Arrangement of materials in accordance with the 5S principle 2. There are no reports of environmental pollution	Implementation Unit

No	Impact Category	Impact Activities/Resources	The Negative Impact Potential	Management Efforts (ME)	Monitoring			
					Location	Frequency and Time	Performance Indicators	Management Institutions
<b>Old Transformers Replacement (JTM Reliability Improvements)</b>								
<b>A</b>	<b>Pre-Construction/Planning</b>							
1	-	Inspection of existing transformer condition	There is no potential negative impact	-	-	-	-	-
<b>B</b>	<b>Construction</b>							
1	OHS - Worker and Community Health and Safety	Replacement of old transformers and its accessories	There are work accidents during the work process	<ol style="list-style-type: none"> <li>1. CSMS certified contractor</li> <li>2. Occupational hazard identification (IBPPR) /JSA</li> <li>3. Work permit for hazardous work</li> <li>4. Compliance with SMK3 Government Regulation No. 50 of 2012</li> <li>5. signs Installation in accordance with the guidelines</li> <li>6. Officers and supervisors</li> </ol>	In accordance with the transformer replacement plan	F: Once W: as per the replacement plan	<ol style="list-style-type: none"> <li>1. Danger sign</li> <li>2. There are no reports of work accidents</li> <li>3. There is no reprimand or termination of work from the officer Stop working authority</li> </ol>	<p>Implementing Unit (for announcements of power outages for customers)</p> <p>The contractor, under the supervision of the Implementing Unit, puts up a work</p>

No	Impact Category	Impact Activities/Resources	The Negative Impact Potential	Management Efforts (ME)	Monitoring			
					Location	Frequency and Time	Performance Indicators	Management Institutions
				<p>are equipped with standard Personal Protective Equipment (PPE)</p> <p>7. Stop Working Authority Inspection</p> <p>8. Works in accordance with Construction Standards for installation, dismantling and transportation of electrical equipment</p> <p>9 Procedure for Handling Spilled Oil / Transformer Oil (in case of leakage)</p> <p>10. LOTO procedure</p>				implementati on sign and a danger sign
2	Social and Traffic		1. Power failures on the customer as a result of outages during the replacement of transformers and	<p>1. Provide power outage information to customers;</p> <p>2. Put up a sign that work is in progress to road users</p>			<p>1. Documentation of outage plan information to customers</p> <p>2. Documentation of work is in progress sign installation</p>	

No	Impact Category	Impact Activities/Resources	The Negative Impact Potential	Management Efforts (ME)	Monitoring			
					Location	Frequency and Time	Performance Indicators	Management Institutions
			accessories 2. Traffic congestion				3. No traffic disruption	
3	Waste	Returning the old transformer to the warehouse	1. Transformer oil seepage upon replacement and returning the transformer 2. The missing transformer components are taken by workers, causing oil to leak	1. Prepare pallets and containers to anticipate seepage / leakage of oil from the transformer;  2. Orderly administrative and supervision of the number of transformers and components returned  3. Works in accordance with Construction Standards for installation, dismantling and transportation of electrical equipment  4. Implementing the Hazardous Waste Management SOP	The entire existing distribution network	F: Once W: when the construction is finished	1. There is no oil seepage from the transformer during replacement and returning activities to the warehouse  2. There are no reports of environmental pollution 3. Material return documentation	Implementation Unit

No	Impact Category	Impact Activities/Resources	The Negative Impact Potential	Management Efforts (ME)	Monitoring			
					Location	Frequency and Time	Performance Indicators	Management Institutions
				5. Preventive Procedures cross-contamination PCB, 6. Procedure for Managing Used Materials and Non-B3 Waste, 7. Procedure for Handling Spilled Oil / Transformer Oil				
<b>C</b>	<b>Operational</b>							
1	OHS - Worker and Community Health and Safety	The electric voltage caused by leakage currents and voltages from the operating power grid	Negative impacts on safety, health and social impact on surrounding communities and workers	Periodic grid inspections to ensure compliance with ROW requirements	At each project site, along the ROW	F: Periodic W: Through-out Operations	1. Inspection report 2. There are no accidents reports on the general public and the workers	Implementati on Unit
2	Waste	Handling and storage of used transformers	1. Soil and water contaminated with transformer oil; 2. Stacking of used transformers in storage sheds	1. Arrangement in warehouse at special warehouse facilities; 2. Storage of used transformers in accordance with SOP	Ware-house Storage	F: During operation W: During operation phase	1. No oil spills from the transformer in the warehouse 2. The used transformer that is stored is empty and covered with a cover to protect it from	UID and / or Implementing Unit

No	Impact Category	Impact Activities/Resources	The Negative Impact Potential	Management Efforts (ME)	Monitoring			
					Location	Frequency and Time	Performance Indicators	Management Institutions
				3. Setting up a process for assets removal 4. Implementing the Hazardous Waste Management SOP, 5. Preventive Procedures Cross-contamination PCB, 6. Procedure for Managing Used Materials and Non-B3 Waste, 7. Procedure for Handling Spilled Oil / Transformer Oil			rain 3. Asset disposal process document	
<b>Key Point Replacement and Installation: LBS, Recloser, DS (JTM Reliability Enhancement)</b>								
<b>A</b>	<b>Pre-Construction/Planning</b>							
1	-	Inspection of existing key point and its network	There is no potential negative impact	-	-	-	-	-
<b>B</b>	<b>Construction</b>							

No	Impact Category	Impact Activities/Resources	The Negative Impact Potential	Management Efforts (ME)	Monitoring			
					Location	Frequency and Time	Performance Indicators	Management Institutions
1	OHS - Worker and Community Health and Safety	Key point Installation and Replacement	There are work accidents during the work process	<ol style="list-style-type: none"> <li>1. Danger sign Installation</li> <li>2. Officers and supervisors are equipped with PPE according to the standard</li> <li>3. The contractor has a CSMS certificate (Contractor Safety Management System)</li> <li>4. Hazard identification of the work (IBPPR) or JSA (job safety analysis)</li> <li>5. Implement SOP in accordance with the work</li> <li>6. working permit,</li> <li>7. workers competencies</li> <li>8. Compliance with SMK3 Government Regulation No. 50 of 2012</li> <li>9. Conduct periodic inspections by Stop</li> </ol>	According to the key point replacement plan	F: Once W: as per the replacement plan	<ol style="list-style-type: none"> <li>1. Danger sign</li> <li>2. There are no reports of work accidents</li> <li>3. There is no reprimand or termination of work from the officer Stop working authority</li> </ol>	Implementing Unit (for announcements of customer power outages); The contractor, under the supervision of the Implementing Unit, puts up a sign of work implementation and a danger sign

No	Impact Category	Impact Activities/Resources	The Negative Impact Potential	Management Efforts (ME)	Monitoring			
					Location	Frequency and Time	Performance Indicators	Management Institutions
				Working Authority officers 10. LOTO procedure				
2	Social and Traffic		1. Electricity users are interrupted due to a blackout during the work on replacing the keypoint and its accessories; 2. The existence of traffic congestion due to project activities	1. Providing information to customers 2. Work is in progress sign installation 3. assigning traffic control officer			1. Information on outage plans to customers 2. Work in progress information signboard 3. Documentation of no traffic disruptions	
3	Waste	Returning the keypoint material and its accessories	1. Damaged (old) keypoint material and / or its accessories are left at the job site so that it becomes waste; 2. The damaged (old) material is taken by the workers so that the potential for contamination cannot be controlled	1. Orderly administrative and control of the quantity of materials to be unloaded and returned 2. Arrangement of ATTB warehouse in accordance with the Procedure for Managing Used Materials and Non-B3 Waste	The entire existing distribution network	F: Once W: the construction is complete	1. Arrangement of materials in accordance with the 5S principle 2. Material return documents	Implementation Unit

No	Impact Category	Impact Activities/Resources	The Negative Impact Potential	Management Efforts (ME)	Monitoring			
					Location	Frequency and Time	Performance Indicators	Management Institutions
			3. The damaged (old) material storage is not neatly arranged so that it has the potential to pollute the environment					
<b>C</b>	<b>Operational</b>							
1	Social	Periodic maintenance of the keypoint and installing a lock on the cover panel	There are no significant potential negative impacts	Notify surrounding customers if there will be a power outage	All keypoints in the existing distribution network	F: During operation W: During operational phase	There are no reports of keypoint interference	Implementation Unit
2	Waste	Handling, storage and disposal of keypoint material and its accessories	Keypoint material stacking in the warehouse	Arrangement of ATTB warehouse in accordance with the Procedure for Managing Used Materials and Non-B3 Waste	Warehouse/ Storage	F: During operation W: During operational phase	The material arrangement is in accordance with the 5S rules	Implementation Unit
<b>Construction of JTM / JTR / Substation (Marketing)</b>								
<b>A</b>	<b>Pre-Construction/Planning</b>							

No	Impact Category	Impact Activities/Resources	The Negative Impact Potential	Management Efforts (ME)	Monitoring				
					Location	Frequency and Time	Performance Indicators	Management Institutions	
1	Ecological, physical, social (land use)	Calculation: 1. Trees that have to be cut down; 2. Number of poles mounting point plan TM / TR and substations; 3. Cable requirements according to JTM / JTR lines and substations	There are no significant potential negative impacts	1. Preliminary agreements with potentially affected parties;  2. Socialization of the 3 meters ROW distance for land owners; 3. Carry out construction according to construction standards	The entire path of the project	F: One time W: Initial Planning	1. Records of agreements / permits with land and tree owners 2. Socialization notes on ROW safety based on safe distances according to the PLN board of directors' regulations	Implementati on Unit	
		There are poles that are placed on agricultural land, forest areas, part of a house / private land	The safe distance from the ROW is not achieved because the network ROW is not fulfilled at least 3 meters which will have a negative impact on land owners				F: one time W: Early Planning (route determination)		1. A route that considers environmental and social aspects  2. Optimal use of public land to avoid private land 3. There is no damage to the pile due to landslides or erosion
		Damage to the pile foundation building (collapsed or tilted) due to landslide or erosion	Damage to poles resulting in a power outage which causes disruption to electricity users						

No	Impact Category	Impact Activities/Resources	The Negative Impact Potential	Management Efforts (ME)	Monitoring			
					Location	Frequency and Time	Performance Indicators	Management Institutions
		Activity is on sites of cultural heritage	The SKTM development plan has the potential to disturb and damage cultural heritage objects	1. Obtain a permit or recommendation from the cultural heritage management authority  2. PLN and the Contractor implement cultural heritage handling procedures for the distribution network		F: One time W: Initial Planning	1. Permission / recommendation from the official authority  2. Consultation note with community leaders	Implementation Unit
2	Social	Preparation of ROW lines and pole locations	Dissatisfaction relates to land use for the ROW, location of poles and substations	Avoid the use of private land, and indigenous group areas by PLN  Consultation and socialization of the importance of ROW, substations and poles to land owners and community leaders by PLN (and the Contractor)	ROW path  ROW lines, poles and substations	F: one-time  W: The Beginning of The Planning	1. The use of privately owned land and indigenous group areas by PLN is insignificant  2. Recording the consultation and socialization with affected communities explaining the importance of poles, substations and restrictions on the ROW	Implementation Unit

No	Impact Category	Impact Activities/Resources	The Negative Impact Potential	Management Efforts (ME)	Monitoring			
					Location	Frequency and Time	Performance Indicators	Management Institutions
				The land use agreement from the land owner is collected by PLN		F: As needed until all agreements with land owners are collected W: Planning phase	Documentation of land use agreements (according to point A. 1)	
<b>B</b>	<b>Construction</b>							
1	OHS - Worker and Community Health and Safety	Excavation for cables, holes for poles, erecting poles, ground cables installation, installing TM / TR / substation's construction and supporting accessories	The negative impact on the safety, health and the social construction workers to the community	<p>1. Danger sign Installation</p> <p>2. Officers and supervisors are equipped with PPE according to the standard</p> <p>Applying ethics required during the construction phase</p> <p>3. The contractor has a CSMS certificate</p>	At each project site, along the ROW	F: Once W: the beginning of construction	<p>1. Danger sign Installation</p> <p>2. Officers use PPE properly and completely in accordance with the requirements</p> <p>3. There are no reports of work accidents</p> <p>4. There is no reprimand or termination of work</p>	The contractor supervised by the implementation Unit

No	Impact Category	Impact Activities/Resources	The Negative Impact Potential	Management Efforts (ME)	Monitoring			
					Location	Frequency and Time	Performance Indicators	Management Institutions
				(Contractor Safety Management System) 4. Hazard identification of the work (IBPPR) or JSA (job safety analysis) 5. Implement SOP in accordance with the work 6. working permit, 7. workers competencies 8. Compliance with SMK3 Government Regulation No. 50 of 2012 9. Conduct periodic inspections by Stop Working Authority officers 10. LOTO procedure			from the officer Stop working authority.	
2	Social and Traffic	Material Placement during installation work	Traffic jams and accidents due to project materials, scattering of soil, gravel and project materials outside the project site, and a	1. Placing traffic control officers at the project site; 2. Install information signs that work is in progress; 3. Prevent scattered construction materials on the road			1. Information on outage plans to customers 2. Work in progress information signboard 3. There is a special	

No	Impact Category	Impact Activities/Resources	The Negative Impact Potential	Management Efforts (ME)	Monitoring			
					Location	Frequency and Time	Performance Indicators	Management Institutions
			power outage due to construction activities	4. Provide a special location for placing the materials (not on the road)  5. Comply with traffic regulations and instructions for orderly use of roads NO. 004 / T / BNKT / 1990			location for placing the materials 4. No traffic disruption 5. Construction material does not contaminate the body of the road	
3	Damage to the plant and construction Waste	installation of the construction of TM/TR/Substation	The existence of waste from the installation / construction activities of TM / TR / substations such as Haspel	Cleaning up waste / garbage after work completion			There is no residual waste from the work site  Repairing the damage plants according to the agreement	
				1. Agreement with the owner for the plant/tree replacement ; 2. Cleaning up waste / garbage after work completion of				
<b>C</b>	<b>Operational</b>							
1	OHS- Worker and Community	Electrical voltage generated from the operating power grid and substations	Negative impacts on safety, health and social impact on surrounding	1. Perform periodic inspections	At each project site, along the ROW	F: During Operations  W: During Operations	1. There are no accidents reports on the general public and the workers;	Implementati on Unit

No	Impact Category	Impact Activities/Resources	The Negative Impact Potential	Management Efforts (ME)	Monitoring			
					Location	Frequency and Time	Performance Indicators	Management Institutions
	Health and Safety		communities and workers	2. Installing a danger sign on the PLN assets that have a voltage  3. Socialization related to safety distance			2. Documentation socialization/ public consultation with the community related to the safe distance	
<b>APP Installation (Marketing)</b>								
<b>A</b>	<b>Pre-Construction/Planning</b>							
1	-	Survey the location of the APP installation plan	There is no potential negative impact	-	-	-	-	-
<b>B</b>	<b>Construction</b>							
1	OHS - Worker and Community Health and Safety	APP installation	There was a work accident while the work was in progress	1. Officers and supervisors have attended work safety training;  2. Officers and supervisors are equipped with PPE according to the standard  3. Implement SOP according to work	Fit to the APP installation location	F: Once W: the beginning of construction	There are no reports of work accidents	Implementation Unit
<b>C</b>	<b>Operational</b>							

No	Impact Category	Impact Activities/Resources	The Negative Impact Potential	Management Efforts (ME)	Monitoring			
					Location	Frequency and Time	Performance Indicators	Management Institutions
1	OHS - Worker and Community Health and Safety	Electricity generated on APP	Negative impacts on safety, health and social impact on surrounding communities and workers	1. APP Installation in accordance with the construction standards and an alarm installation if needed 2. Providing information on danger signs on APP	Fit to the APP installation location	F: Through-out operations  W: Through-out Operations	1. Customer IML already has SLO 2. There are no accidents reports on the general public and the workers	Implementati on Unit
<b>Replacement of 1 Phase/3 Phase meter boxes (Efficiency)</b>								
<b>A</b>	<b>Pre-Construction/Planning</b>							
1	Social	Data collection of damaged/old/ stuck/ blurry meter boxes	There was a refusal to replace the meter boxes from the customer	Socialization and education regarding the meter boxes replacement	Fit to meter boxes replaceme nt	F: Once W: the beginning of constructio n	Socialization notes at the time of socialization	Implementati on Unit
<b>B</b>	<b>Construction</b>							

No	Impact Category	Impact Activities/Resources	The Negative Impact Potential	Management Efforts (ME)	Monitoring			
					Location	Frequency and Time	Performance Indicators	Management Institutions
1	OHS - Worker and Community Health and Safety	Installation of meter boxes replacement	There was a work accident while the work was in progress	1. Officers and supervisors have attended work safety training; 2. Officers and supervisors are equipped with PPE according to the standard	Fit with consumer meter boxes installation	F: Once W: the beginning of construction	There are no reports of work accidents	Implementation Unit
2	Waste		1. Old meter boxes are scattered outside the warehouse so that the potential for pollution cannot be controlled. 2. Arrangement of ATTB warehouse in accordance with the Procedure for Managing Used Materials and Non-B3 Waste	1. Orderly administrative and control of the quantity of materials to be unloaded and returned 2. Arrangement of ATTB warehouse in accordance with the Procedure for Managing Used Materials and Non-B3 Waste	Fit with consumer meter boxes installation	F: Once W: at the end of one construction phase	1. Material return documents	Implementation Unit
<b>C</b>	<b>Operational</b>							
1	Waste	Handling, storage and disposal of used meter boxes materials	Used meter boxes material stacking in the warehouses	Arrangement of ATTB warehouse in accordance with the Procedure for Managing Used Materials and Non-B3 Waste	Warehouse/Storage	F: During operation W: During operational phase	The material arrangement is in accordance with the 5S rules	Implementation Unit

No	Impact Category	Impact Activities/Resources	The Negative Impact Potential	Management Efforts (ME)	Monitoring			
					Location	Frequency and Time	Performance Indicators	Management Institutions
2	Social		Theft of meter boxes	Good administrative in data collection on the stored meter boxes	Warehouse/Storage	F: During operation W: During the storage phase	There are no findings / reports of theft of the meter boxes	Implementation Unit

Appendix 3 :List of Environmental Approvals and Permits

No.	Business Unit	Environmental Approvals and Permits
1	UID Jatim	<ul style="list-style-type: none"> <li>a. DPPL Office Building of PT PLN (Persero) UID Jatim No. 6660/539/436.7.2/2009, issued by Environment Agency of Surabaya City, 10 September 2009</li> <li>b. DPLH Recommendation for 20 kV Electricity Network for East Java Distribution Area No. 660/11562/111.2/2020, issued by Environment Agency of East Java Province, 18 May 2020</li> <li>c. Environment Permit of DPLH 20 Kv Electricity Network for East Java Distribution Area No. 17.05/3/02/V/2020, issued by Investment and Integrated One-Stop Services Agency of East Java Province, 20 May 2020</li> </ul>
2	UP3 Banyuwangi	<ul style="list-style-type: none"> <li>a. DPPL Office Building of PT PLN (Persero) UP3 Banyuwangi No. 660/2967/429.207/2009, issued by Regional Secretariat of Banyuwangi Regency, 8 September 2009</li> <li>b. SPPL Office Building of PT PLN (Persero) ULP Genteng No. 660.2/157/SPPL/VIII/2017, issued by Environment Agency of Banyuwangi Regency, 03 August 2017</li> <li>c. SPPL Office Building of PT PLN (Persero) ULP Jajag No. 660.2/159/SPPL/VIII/2017, issued by Environment Agency of Banyuwangi Regency, 03 August 2017</li> <li>d. SPPL Office Building of PT PLN (Persero) ULP Muncar No. 660.2/160/SPPL/VIII/2017, issued by Environment Agency of Banyuwangi Regency, 03 August 2017</li> <li>e. SPPL Office Building of PT PLN (Persero) ULP Rogojampi No. 660.2/158/SPPL/VIII/2017, issued by Environment Agency of Banyuwangi Regency, 03 August 2017</li> <li>f. SPPL Office Building of PT PLN (Persero) ULP Banyuwangi Kota No. 660.2/158/SPPL/VIII/2017, issued by Environment Agency of Banyuwangi Regency, 03 August 2017</li> <li>g. Hazardous Waste Temporary Storage Permit No. 660/124/429.104/ 2018 issued by Environment Agency of Banyuwangi Regency, 17 Jan 2018</li> </ul>
3	UP3 Bojonegoro	<ul style="list-style-type: none"> <li>a. DPPL Office Building of PT PLN (Persero) UP3 Bojonegoro No. 660/677/207.412/2009, issued by Environment Agency of Bojonegoro Regency, 24 August 2009</li> <li>b. DPLH Office Building of PT PLN (Persero) ULP Lamongan No. 660/202/413.117/2018, issued by Environment Agency of Lamongan Regency, 22 January 2018</li> <li>c. SPPL Office Building of PT PLN (Persero) ULP Babat No. 660/555.SPPL 413.117/2020, issued by Environment Agency of Lamongan Regency, 30 September 2020</li> </ul>

No.	Unit Business	Environmental Approvals and Permits
		<ul style="list-style-type: none"> <li>d. SPPL Office Building of PT PLN (Persero) ULP Brondong No. 660/556.SPPL/413.117/2020, issued by Environment Agency of Lamongan Regency, 30 September 2020</li> <li>e. SPPL Office Building of PT PLN (Persero) ULP Jatirogo No. 660/349.SPPL/413.112/2020, issued by Environment Agency of Tuban Regency, 22 December 2020</li> <li>f. SPPL Office Building of PT PLN (Persero) ULP Tuban No. 660/350.SPPL/413.112/2020, issued by Environment Agency of Tuban Regency, 22 December 2020</li> <li>g. Hazardous Waste Temporary Storage Permit No. 188/1789/Kep/413.111/2018, issued by Investment and Integrated One-Stop Services Agency of Lamongan Regency, 14 May 2018</li> </ul>
4	UP3 Gresik	<ul style="list-style-type: none"> <li>a. DPPL Office Building of PT PLN (Persero) UP3 Gresik No. 660/557A/437.75/2009, issued by Environment Agency of Gresik Regency dated 01 October 2009</li> <li>b. DPLH Recommendation for Bawean Diesel Power Plant No. 660/183/DPLH/437.75/2017, issued by Environment Agency of Gresik Regency dated 26 October 2017</li> <li>c. SPPL Office Building of PT PLN (Persero) ULP Benjeng No. 660/337/SPPL/437.75/2017, issued by Environment Agency of Gresik Regency dated 8 December 2017</li> <li>d. SPPL Office Building of PT PLN (Persero) ULP Giri No. 660/336/SPPL/437.75/2017, issued by Environment Agency of Gresik Regency dated 8 December 2017</li> <li>e. SPPL Office Building of PT PLN (Persero) ULP Sidayu No. 660/169/SPPL/437.75/2018, issued by Environment Agency of Gresik Regency dated 29 October 2018</li> </ul>
5	UP3 Jember	<ul style="list-style-type: none"> <li>a. DPPL Office Building of PT PLN (Persero) UP3 Jember No. 660.1/291/512/2009, issued by Environment Agency of Jember Regency dated 16 September 2009</li> <li>b. SPPL Office Building of PT PLN (Persero) ULP Ambulu, issued by Environment Agency of Jember Regency, 11 Dec 2018</li> <li>c. SPPL Office Building of PT PLN (Persero) ULP Jember Kota, issued by Environment Agency of Jember Regency, 11 Dec 2018</li> <li>d. SPPL Office Building of PT PLN (Persero) ULP Kalisat, issued by Environment Agency of Jember Regency, 11 Dec 2018 SPPL Office Building of PT PLN (Persero) ULP Kencong, issued by Environment Agency of Jember Regency, 11 Dec 2018</li> </ul>

No.	Unit Business	Environmental Approvals and Permits
		<ul style="list-style-type: none"> <li>f. SPPL Office Building of PT PLN (Persero) ULP Klakah No. 366/SPPL/XII/2018, issued by Environment Agency of Lumajang Regency dated 18 December 2018</li> <li>g. SPPL Office Building of PT PLN (Persero) ULP Lumajang No. 367/SPPL/XII/2018, issued by Environment Agency of Lumajang Regency dated 18 December 2018</li> <li>h. SPPL Office Building of PT PLN (Persero) ULP Rambipuji, issued by Environment Agency of Jember Regency dated 11 December 2018</li> <li>i. SPPL Office Building of PT PLN (Persero) ULP Tanggul, issued by Environment Agency of Jember Regency dated 11 December 2018</li> <li>j. SPPL Office Building of PT PLN (Persero) ULP Tempeh No. 364/SPPL/XII/2018, issued by Environment Agency of Lumajang Regency dated 18 December 2018</li> <li>k. Hazardous Waste Temporary Storage Permit No. 660.1/1409/35.09.319/2017, issued by Environment Agency of Jember Regency dated 19 December 2017</li> </ul>
6	UP3 Kediri	<ul style="list-style-type: none"> <li>a. DPPL Office Building of PT PLN (Persero) UP3 Kediri No. 660/193/419.37/2009, issued by Environment Agency of Kediri City dated 23 October 2009</li> <li>b. SPPL Office Building of PT PLN (Persero) ULP Kediri Kota No. 660/057/AMD/419.111/2018, issued by Environment Agency of Kediri City dated July 8, 2018</li> <li>c. SPPL Office Building of PT PLN (Persero) ULP Tulungagung No. 660.1/151/SPPL/118/2018, issued by Environment Agency of Tulungagung Regency dated 16 July 2018</li> <li>d. SPPL Office Building of PT PLN (Persero) ULP Ngunut No. 660.1/150/SPPL/118/2018, issued by Environment Agency of Tulungagung Regency dated 16 July 2018</li> <li>e. SPPL Office Building of PT PLN (Persero) ULP Srengat No. 660/143/409.113.2/2018, issued by Environment Agency of Blitar Regency dated 08 August 2018</li> <li>f. SPPL Office Building of PT PLN (Persero) ULP Pare No. 660.1/276/418.35/2018, issued by Environment Agency of Kediri Regency dated 28 June 2018</li> <li>g. SPPL Office Building of PT PLN (Persero) ULP Wlingi No. 660/131/409.113.2/2018, issued by Environment Agency of Blitar Regency dated 19 July 2018</li> <li>h. SPPL Office Building of PT PLN (Persero) ULP Sutojayan No. 660/140/409.113.2/2018, issued by Environment Agency of Blitar Regency dated 07 August 2018</li> <li>i. SPPL Office Building of PT PLN (Persero) ULP Ngadiluwih No. 660.1/275/418.35/2018, issued by Environment Agency of Kediri Regency dated 28 June 2018</li> </ul>

No.	Unit Business	Environmental Approvals and Permits
		<ul style="list-style-type: none"> <li>j. SPPL Office Building of PT PLN (Persero) ULP Grogol No. 660.1/274/418.35/2018, issued by Environment Agency of Kediri Regency dated 28 June 2018</li> <li>k. SPPL Office Building of PT PLN (Persero) ULP Blitar No. 660.1/13/410.2081/SPPL/VII/2018, issued by Environment Agency of Blitar Regency dated 19 July 2018</li> <li>l. SPPL Office Building of PT PLN (Persero) ULP Campurdarat No. 660.1/149/SPPL/118/2018, issued by Environment Agency of Campurdarat Regency dated 16 July 2018</li> <li>m. Environment Permit for Bangsongan guard office No. 503.11.05/1987/418.27/2018, issued by Investment and Integrated One-Stop Services Agency of Kediri Regency dated 09 July 2018</li> <li>n. Hazardous Waste Temporary Storage Permit No. 503.11.01/1814/418.27/2018, issued by Investment and Integrated One-Stop Services Agency of Kediri Regency dated 28 June 2018</li> </ul>
7	UP3 Madiun	<ul style="list-style-type: none"> <li>a. DPPL Office Building of PT PLN (Persero) UP3 Madiun No. 660/532/401.304/2009, issued by Environment Agency of Madiun City dated 9 October 2009</li> <li>b. SPPL Office Building of PT PLN (Persero) ULP Magetan No. 493, issued by Environment Agency of Magetan Regency dated 25 April 2019</li> <li>c. SPPL Office Building of PT PLN (Persero) ULP Ngawi No. 660/547/404.111/2018, dated 06 July 2018</li> <li>d. SPPL Office Building of PT PLN (Persero) ULP Maospati No. 942, issued by Environment Agency of Magetan Regency dated 26 June 2018</li> <li>e. DPLH Office Building of PT PLN (Persero) ULP Caruban No. 660.1/3594/402.117/2018, dated 28 December 2018</li> <li>f. SPPL Office Building of PT PLN (Persero) ULP Dolopo No. 436/SPPL/2018, issued by Environment Agency of Madiun Regency dated 22 November 2018</li> <li>g. SPPL Office Building of PT PLN (Persero) ULP Mantingan No. 660/3556/404.111/2019, dated 16 April 2019</li> <li>h. Hazardous Waste Temporary Storage Permit No. 503.44/003/401.106/2018, issued by Investment and Integrated One-Stop Services Agency of Madiun City dated 04 September 2018</li> </ul>
8	UP3 Malang	<ul style="list-style-type: none"> <li>a. DPLH Office Building of PT PLN (Persero) UP3 Malang Customer Service Unit No. 660/287/35.73.406/2009, issued by Environment Agency of Malang City dated 15 September 2009</li> </ul>

No.	Unit Business	Environmental Approvals and Permits
		<ul style="list-style-type: none"> <li>b. SPKPPLH Office Building of PT PLN (Persero) ULP Lawang No. 660.4/5092/35.07.117/2018, issued by Environment Agency of Malang Regency dated 12 November 2018</li> <li>c. SPPL Office Building of PT PLN (Persero) ULP Bululawang No. 660.4/5089/35.07.117/2018, issued by Environment Agency of Malang Regency dated 12 November 2018</li> <li>d. SPPL Office Building of PT PLN (Persero) ULP Batu No. 660/611/DL/422.110/2019, dated 30 July 2019</li> <li>e. SPPL Office Building of PT PLN (Persero) ULP Singosari No. 660.4/5088/35.07.117/2018, issued by Environment Agency of Malang Regency dated 12 November 2018</li> <li>f. SPPL Office Building of PT PLN (Persero) ULP Kepanjen 660.4/5091/35.07.117/2018, issued by Environment Agency of Malang Regency dated 12 November 2018</li> <li>g. SPPL Office Building PT (PLN (Persero) ULP Kebonagung No. 107/SPPL/35.73/307/2019, dated 03 May 2019</li> <li>h. SPPL Office Building of PT PLN (Persero) ULP Tumpang No. 660.4/5085/35.07.117/2018, issued by Environment Agency of Malang Regency dated 12 November 2018</li> <li>i. SPPL Office Building of PT PLN (Persero) ULP Gondanglegi No. 660.4/5093/35.07.117/2018, issued by Environment Agency of Malang Regency dated 12 November 2018</li> <li>j. SPPL Office Building of PT PLN (Persero) ULP Dampit No. 660.4/5094/35.07.117/2018, issued by Environment Agency of Malang Regency dated 12 November 2018</li> <li>k. SPPL Office Building of PT PLN (Persero) ULP Ngantang No. 660.4/5090/35.07.117/2018, issued by Environment Agency of Malang Regency dated 12 November 2018</li> <li>l. SPPL Office Building of PT PLN (Persero) ULP Sumberpucung No. 660.4/508735.07.117/2018, issued by Environment Agency of Malang Regency dated 12 November 2018</li> <li>m. SPPL Office Building of PT PLN (Persero) ULP Dinoyo No. 109/SPPL/35.73/307/2018, issued by Environment Agency of Malang City dated 20 December 2018</li> <li>n. SPPL Office Building of PT PLN (Persero) ULP Blimbing No. 660.4/5086/35.07.117/2018, issued by Environment Agency of Malang Regency dated 12 November 2018</li> <li>o. SPKPPLH Hazardous Waste Temporary Storage No. 660.4/4476/SKPPLH/35.07.117/2017, issued by Environment Agency of Malang Regency dated 12 November 2018</li> </ul>
9	UP3 Mojokerto	<ul style="list-style-type: none"> <li>a. UKL-UPL Office Building of PT PLN (Persero) UP3 Mojokerto No. 660/437/416-203.A/2009, issued by Investment and Integrated One-Stop Services Agency of Mojokerto Regency dated 12 February 2019</li> </ul>

No.	Unit Business	Environmental Approvals and Permits
		<ul style="list-style-type: none"> <li>b. SPPL Office Building PT (PLN (Persero) ULP Mojoagung No. 78/SPPL-B/2017, issued by Environment Agency of Jombang Regency dated 29 May 2017</li> <li>c. SPPL Office Building of PT PLN (Persero) ULP Mojokerto Kota No. 660/1832/417.312/2018, dated 17 May 2018</li> <li>d. SPPL Office Building of PT PLN (Persero) ULP Jombang No. 203/SPPL-B/2018, issued by Environment Agency of Jombang Regency dated 16 November 2018</li> <li>e. SPPL Office Building of PT PLN (Persero) ULP Ngoro No. 97/SPPL-B/2018, dated 7 May 2018</li> <li>f. SPPL Office Building of PT PLN (Persero) ULP Mojosari No. 48/SPPL/2018, dated 24 September 2018</li> <li>g. SPPL Office Building of PT PLN (Persero) ULP Ploso No. 96/SPPL/2018, dated May 7, 2018</li> <li>h. SPPL Office Building of PT PLN (Persero) ULP Pacet No. 47/SPPL/2018, dated 24 September 2018</li> <li>i. SPPL Office Building of PT PLN (Persero) ULP Kertosono No. 660/2199/411.315/2018, dated 14 August 2018</li> <li>j. SPPL Office Building of PT PLN (Persero) ULP Warujayeng No. 660/2197/411.315/2018, dated 14 August 2018</li> <li>k. SPPL Office Building of PT PLN (Persero) ULP Nganjuk No. 660/2198/411.315/2018, dated 14 August 2018</li> </ul>
10	UP3 Pamekasan	<ul style="list-style-type: none"> <li>a. SPPL Office Building of PT PLN (Persero) UP3 Pamekasan No. 660/322/441.407/2009, issued by Regional Secretariat of Pamekasan Regency dated 24 September 2009</li> <li>b. SPPL Office Building of PT PLN (Persero) ULP Pamekasan No. 660.1/229/432.310/Dok.Lingk/2018, issued by Environment Agency of Pamekasan Regency dated 30 October 2018</li> <li>c. SPPL Office Building of PT PLN (Persero) ULP Sumenep No. 660.1/165/432.310.Dok.Lingk/2019, issued by Environment Agency of Sumenep Regency dated 25 March 2019</li> <li>d. SPPL Office Building of PT PLN (Persero) ULP Sampang No. 660/775/434.219/2019, issued by Environment Agency of Sampang Regency dated 27 March 2019</li> <li>e. SPPL Office Building of PT PLN (Persero) ULP Bangkalan No. 041-2018, issued by Environment Agency of Bangkalan Regency dated 14 November 2018</li> <li>f. SPPL Office Building of PT PLN (Persero) ULP Kamal No. 194 - 2019, dated 21 November 2019</li> <li>g. SPPL Office Building of PT PLN (Persero) ULP Ketapang No. 660/217/434.219/2019, dated 27 March 2019</li> <li>h. SPPL Office Building of PT PLN (Persero) ULP Blega No. 082/2019, dated 3 July 2019</li> </ul>

No.	Unit Business	Environmental Approvals and Permits
		<ul style="list-style-type: none"> <li>i. SPPL Office Building of PT PLN (Persero) ULP Prenduan No. 660/137/REKOM.013/435.119.2/2019, 13 March 2019</li> <li>j. SPPL Office Building of PT PLN (Persero) ULP Ambunten No. 660/146/REKOM.013/435.119.2/2019, 13 March 2019</li> <li>k. SPPL Office Building of PT PLN (Persero) ULP Waru No. 660.1/165/432.310.Dok.Lingk/2019, dated 25 March 2019</li> <li>l. UKL-UPL Recommendation for Gili Genting Diesel Power Plant No. 660/663/DPLH.030/435.119.2/2017, issued by Environment Agency of Sumenep Regency dated 20 December 2017</li> <li>m. UKL-UPL Recommendation for Gili Iyang Diesel Power Plant No. 660/60/UKL-UPL.027/435.119.2/2017, issued by Environment Agency of Sumenep Regency, 20 December 2017</li> <li>n. UKL-UPL Recommendation for Kangean Diesel Power Plant No. 660/661/DPLH.028/435.119.2/2017, issued by Environment Agency of Sumenep Regency dated 20 December 2017</li> <li>o. UKL-UPL Recommendation for Mandangin Diesel Power Plant No. 660/39/434.219/2018, issued by Environment Agency of Sumenep Regency dated 15 January 2018</li> <li>p. UKL-UPL Recommendation for Raas Diesel Power Plant No. 660/174/UKL-UPL.022/435.119.2/2017, issued by Environment Agency of Sumenep Regency dated 03 March 2020</li> <li>q. UKL-UPL Recommendation for Sapeken Diesel Power Plant No. 660/662/DPLH.029/435.119.2/2017, issued by Environment Agency of Sumenep Regency dated 20 December 2017</li> <li>r. DPLH Recommendation for Sapudi Diesel Power Plant No. 660/664/DPLH.031/435.119.2/2017, issued by Environment Agency of Sumenep Regency, 20 December 2017</li> <li>s. Hazardous Waste Temporary Storage Permit No. 503/518/DPMPSTSP/435.120.4/2018, issued by Investment and Integrated One-Stop Services Agency of Sumenep Regency dated 27 June 2018</li> </ul>
11	UP3 Pasuruan	<ul style="list-style-type: none"> <li>a. DPPL Office Building of PT PLN (Persero) UP3 Pasuruan No. 660/192/423.208/2009, issued by Environment Agency of Pasuruan City dated 31 August 2009</li> <li>b. SPPL Office Building of PT PLN (Persero) ULP Pasuruan Kota No. SPPL/301/423.110/2018, issued by Environment Agency of Pasuruan City dated 03 December 2018</li> </ul>

No.	Unit Business	Environmental Approvals and Permits
		<ul style="list-style-type: none"> <li>c. SPPL Office Building of PT PLN (Persero) ULP Gondangwetan No. 132/SPPL/2018, issued by Environment Agency of Pasuruan Regency dated 13 November 2018</li> <li>d. SPPL Office Building of PT PLN (Persero) ULP Bangil No. 131/SPPLI/2018, issued by Environment Agency of Pasuruan Regency dated 13 November 2018</li> <li>e. SPPL Office Building of PT PLN (Persero) ULP Pandaan No. 136/SPPLI/2018, issued by Environment Agency of Pasuruan Regency dated 13 November 2018</li> <li>f. SPPL Office Building of PT PLN (Persero) ULP Prigen No. 134/SPPL/2018, issued by Environment Agency of Pasuruan Regency dated 13 November 2018</li> <li>g. SPPL Office Building of PT PLN (Persero) ULP Probolinggo No. 660/2480/425.116/2018, issued by Environment Agency of Probolinggo City dated 11 October 2018</li> <li>h. SPPL Office Building of PT PLN (Persero) ULP Sukorejo No. 135/SPPL/2018, issued by Environment Agency of Pasuruan Regency dated 13 November 2018</li> <li>i. UKL-UPL Recommendation for Gili Ketapang Diesel Power Plant No. 503/002/426.116/2018, issued by Investment and Integrated One-Stop Services Agency of Probolinggo Regency dated 08 May 2018</li> <li>j. Hazardous Waste Temporary Storage Permit No. 503/003/LB3/423.107/2018, issued by Investment and Integrated One-Stop Services Agency of Pasuruan City 23 August 2018</li> </ul>
12	UP3 Ponorogo	<ul style="list-style-type: none"> <li>a. DPPL Office Building of PT PLN (Persero) UP3 Ponorogo No. 660/396/405.26/2009, issued by Environment Agency of Ponorogo Regency dated 02 September 2009</li> <li>b. SPPL Office Building of PT PLN (Persero) ULP Ponorogo No. 660/234/405.25/2018, issued by Environment Agency of Ponorogo Regency dated 8 October 2018</li> <li>c. SPPL Office Building of PT PLN (Persero) ULP Balong No. 660/231/405.25/2018, issued by Environment Agency of Ponorogo Regency dated 8 October 2018</li> <li>d. SPPL Office Building of PT PLN (Persero) ULP Pacitan No. 660.1/174/408.25/2018, issued by Environment Agency of Pacitan Regency dated 27 November 2018</li> <li>e. SPPL Office Building of PT PLN (Persero) ULP Trenggalek Customer Service Unit No. 660.1/174/408.25/2018, issued by Environment Agency of Trenggalek Regency dated 28 November 2018</li> </ul>
13	UP3 Sidoarjo	<ul style="list-style-type: none"> <li>a. DPPL Office Building of PT PLN (Persero) UP3 Sidoarjo No. 660/1704/404.6.3/2009, issued by Environment Agency of Sidoarjo Regency dated 25 September 2009</li> </ul>

No.	Unit Business	Environmental Approvals and Permits
		<ul style="list-style-type: none"> <li>b. SPPL Office Building of PT PLN (Persero) ULP Sidoarjo Kota No. 660/35/438.5.15/2018, issued by Investment and Integrated One-Stop Services Agency of Sidoarjo Regency dated 13 December 2018</li> <li>c. SPPL Office Building of PT PLN (Persero) ULP Porong No. 660/36/438.5.15/2018, issued by Investment and Integrated One-Stop Services Agency of Sidoarjo Regency dated 13 December 2018</li> <li>d. SPPL Office Building of PT PLN (Persero) ULP Krian No. 660/3#/438.5.15/2018, issued by Investment and Integrated One-Stop Services Agency of Sidoarjo Regency dated 13 December 2018</li> </ul>
14	UP3 Situbondo	<ul style="list-style-type: none"> <li>a. DPPL Office Building of PT PLN (Persero) UP3 Situbondo No. 660.1/229/431.401.2/2009, issued by Environment Agency of Situbondo Regency dated 24 September 2009</li> <li>b. SPPL Office Building of PT PLN (Persero) ULP Panarukan No. 1279/MUM.00.01/2017, dated 31 July 2017</li> <li>c. SPPL Office Building of PT PLN (Persero) ULP Wonosari No. 660.1/1212SPPL/430.9.6/2018, issued by Environment Agency of Bondowoso Regency dated 14 November 2018</li> <li>d. SPPL Office Building of PT PLN (Persero) ULP Asembagus No. 1277/MUM.00.01/2017, issued by Environment Agency of Situbondo Regency dated 31 July 2017</li> <li>e. SPPL Office Building of PT PLN (Persero) ULP Besuki No. 1278/MUM.00.01/2017, issued by Environment Agency of Situbondo Regency dated 31 July 2017</li> <li>f. SPPL Office Building of PT PLN (Persero) ULP Bondowoso No. 660.1/541.2/SPPL/430.9.6/2018, issued by Environment Agency of Bondowoso Regency, 6 June 2018</li> <li>g. Hazardous Waste Temporary Storage Permit No. 188.4/I/ILI/431.218/2018, issued by Investment and Integrated One-Stop Services Agency of Situbondo Regency dated 07 February 2018</li> </ul>
15	UP3 Surabaya Barat	<ul style="list-style-type: none"> <li>a. DPPL Office Building of PT PLN (Persero) UP3 Surabaya Barat No. 660/4062/404.6.3/2015, issued by Environment Agency of Sidoarjo Regency dated 22 December 2015</li> <li>b. SPPL Office Building of PT PLN (Persero) ULP Menganti No. 660/43/SPPL/437.75/2017, dated 6 March 2019</li> </ul>
16	UP3 Surabaya Selatan	<ul style="list-style-type: none"> <li>a. DPPL Office Building of PT PLN (Persero) UP3 Surabaya Selatan No. 660/515/436.7.2/2009, issued by Environment Agency of Surabaya City dated 8 September 2009</li> </ul>

No.	Unit Business	Environmental Approvals and Permits
		<ul style="list-style-type: none"> <li>b. SPPL Office Building of PT PLN (Persero) ULP Darmo Permai No. 660.1/344/436.7.12/2019, issued by Environment Agency of Surabaya City dated 06 March 2019</li> <li>c. SPPL Office Building of PT PLN (Persero) ULP Dukuh Kupang No. 660.1/343/436.7.12/2019, issued by Environment Agency of Surabaya City dated 06 March 2019</li> <li>d. SPPL Office Building of PT PLN (Persero) ULP Ngagel No. 660/515/436.7.2/2009, issued by Environment Agency of Surabaya City dated 08 September 2019</li> <li>e. SPPL Office Building of PT PLN (Persero) ULP Rungkut No. 660.1/317/436.7.12/2019, issued by Environment Agency of Surabaya City dated 27 February 2019</li> </ul>
17	UP3 Surabaya Utara	<ul style="list-style-type: none"> <li>a. DPPL Office Building of PT PLN (Persero) UP3 Surabaya Utara No. 660/516/436.7.2/2009, issued by Environment Agency of Surabaya City dated 8 September 2009</li> <li>b. SPPL Office Building of PT PLN (Persero) ULP Indrapura No. 660.1/1874/436.7.12/2019, issued by Environment Agency of Surabaya City dated 21 November 2019</li> <li>c. SPPL Office Building of PT PLN (Persero) ULP Ploso No. 660.1/1333/436.7.12/2018, issued by Environment Agency of Surabaya City dated 17 October 2018</li> <li>d. SPPL Office Building of PT PLN (Persero) ULP Tandés No. 660.1/1334/436.7.12/2018, issued by Environment Agency of Surabaya City dated 17 October 2018</li> <li>e. SPPL Office Building of PT PLN (Persero) ULP Perak No. 660.1/1334/436.7.12/2018, issued by Environment Agency of Surabaya City dated 17 October 2018</li> <li>f. SPPL Office Building of PT PLN (Persero) ULP Kenjeran No. 660.1/1720/436.7.12/2016, issued by Environment Agency of Surabaya City dated 19 October 2016</li> </ul>

#### Appendix 4 :List of Indonesia's Environmental and Social Regulations

##### **A. Environmental Regulations Acts**

1. Undang-Undang No. 5 Tahun 1960 tentang Peraturan Dasar Pokok-Pokok Agraria;
2. Undang-Undang No. 5 Tahun 1990 tentang Konservasi Sumber Daya Alam Hayati dan Ekosistemnya;
3. Undang-Undang No. 7 Tahun 1994 tentang Ratifikasi Perjanjian Pembentukan Organisasi Perdagangan Dunia;
4. Undang-Undang No. 5 Tahun 1994 tentang Ratifikasi Konvensi PBB tentang Keanekaragaman Hayati (UN-CBD);
5. Undang-Undang No. 39 Tahun 1999 tentang Hak Asasi Manusia;
6. Undang-Undang No. 41 Tahun 1999 tentang Kehutanan, dengan perubahan Undang-Undang No. 11 Tahun 2020 tentang Cipta Kerja;
7. Undang-Undang No. 13 Tahun 2003 tentang Ketenagakerjaan, dengan perubahan Undang- Undang No. 11 Tahun 2020 tentang Cipta Kerja;
8. Undang-Undang No. 17 Tahun 2004 tentang Ratifikasi Protokol Kyoto untuk Konvensi Kerangka Kerja PBB tentang Perubahan Iklim;
9. Undang-Undang No. 24 Tahun 2007 tentang Penanggulangan Bencana;
10. Undang-Undang No. 26 Tahun 2007 tentang Penataan Ruang, dengan perubahan Undang- Undang No. 11 Tahun 2020 tentang Cipta Karya;
11. Undang-Undang No. 30 Tahun 2007 tentang Energi;
12. Undang-Undang No. 14 Tahun 2008 tentang Keterbukaan Informasi Publik;
13. Undang-Undang No. 19 Tahun 2009 tentang Ratifikasi Konvensi Stockholm tentang bahan Pencemar Organik yang Persisten;
14. Undang-Undang No. 30 Tahun 2009 tentang Ketengalistrikan, dengan perubahan Undang- Undang No. 11 Tahun 2020 tentang Cipta Kerja;
15. Undang-Undang No. 32 Tahun 2009 tentang Perlindungan dan Pengelolaan Lingkungan Hidup, dengan perubahan Undang-Undang No. 11 Tahun 2020 tentang Cipta Kerja;
16. Undang-Undang No. 36 Tahun 2009 tentang Kesehatan, dengan perubahan Undang-Undang No. 11 Tahun 2020 tentang Cipta Kerja;
17. Undang-Undang No. 45 Tahun 2009 tentang Perubahan Undang-Undang No.31 Tahun 2004 tentang Perikanan, dengan perubahan Undang-Undang No. 11 Tahun 2020 tentang Cipta Kerja;
18. Undang-Undang No. 11 Tahun 2010 tentang Cagar Budaya;
19. Undang-Undang No. 17 Tahun 2013 tentang Organisasi Kemasyarakatan;
20. Undang-Undang No. 18 Tahun 2013 tentang Pencegahan dan Pemberantasan Perusakan Hutan, dengan perubahan Undang-Undang No. 11 Tahun 2020 tentang Cipta Kerja;
21. Undang-Undang No. 1 Tahun 2014 tentang Pengelolaan Wilayah Pesisir dan Pulau-Pulau Kecil, dengan perubahan Undang-Undang No. 11 Tahun 2020 tentang Cipta Kerja;
22. Undang-Undang No. 21 Tahun 2014 tentang Panas Bumi, dengan perubahan Undang- Undang No. 11 Tahun 2020 tentang Cipta Kerja;
23. Undang-Undang No. 22 Tahun 2019 tentang Sistem Budi Daya Pertanian Berkelanjutan, dengan perubahan Undang-Undang No. 11/2020 tentang Cipta kerja.

##### **Government Regulations**

1. Peraturan Pemerintah No. 21 Tahun 2008 tentang Manajemen Bencana
2. Peraturan Pemerintah No. 70 Tahun 2009 tentang Konservasi

3. Peraturan Pemerintah No. 50 Tahun 2012 tentang Penerapan Sistem Manajemen Keselamatan dan Kesehatan Kerja;
4. Peraturan Pemerintah No. 34 Tahun 2018 tentang Sistem Standardisasi dan Penilaian Kesesuaian Nasional;
5. Peraturan Pemerintah No. 22 Tahun 2021 Tentang Penyelenggaraan Perlindungan dan Pengelolaan Lingkungan Hidup;
6. Peraturan Pemerintah No. 5 Tahun 2021 tentang Penyelenggaraan Perizinan Berusaha Berbasis Risiko;

#### **Presidential Decrees, Instructions, and Regulation**

1. Instruksi Presiden No. 9 Tahun 2000 tentang Pengarusutamaan Gender dalam Proses Pembangunan
2. Keputusan Presiden No. 32 Tahun 1990 tentang Pengelolaan Kawasan Lindung
3. Keputusan Presiden No. 23 Tahun 1992 tentang Ratifikasi Konvensi Wina untuk Perlindungan Lapisan Ozon dan Protokol Montreal tentang Zat yang Menguras Lapisan Ozon sebagaimana Disesuaikan dan Dlubah oleh Pertemuan Kedua Para Pihak London, 27-29 Juni 1990
4. Keputusan Presiden No. 46 Tahun 2005 Perubahan atas Protokol Montreal tentang Zat yang Menguras Lapisan Ozon
5. Instruksi Presiden No. 10 Tahun 2011 tentang Penundaan Pemberian Izin Baru dan Penyempurnaan Tata Kelola Hutan Alam Primer dan Lahan Gambut
6. Peraturan Presiden No. 92 Tahun 2020 tentang Kementerian Lingkungan Hidup dan Kehutanan;
7. Peraturan Presiden No. 98 Tahun 2021 tentang Penyelenggaraan Nilai Ekonomi Karbon untuk Pencapaian Target Kontribusi yang Ditetapkan Secara Nasional dan Pengendalian Emisi Gas Rumah Kaca dalam Pembangunan Nasional

#### **Ministry Decrees and Regulations**

1. Keputusan Kepala Badan Pengelolaan Dampak Lingkungan No. 299 Tahun 1996 tentang Arah Teknis Penilaian Sosial dalam AMDAL;
2. Keputusan Kepala Badan Pengelolaan Dampak Lingkungan No. 124 Tahun 1997 tentang Penilaian Kesehatan Masyarakat dalam AMDAL;
3. Keputusan Menteri Lingkungan Hidup No. 45 Tahun 2005 tentang Pedoman Penyusunan Laporan Realisasi Rencana Pengelolaan Lingkungan (RKL) dan Rencana Pemantauan Lingkungan (RPL);
4. Peraturan Menteri Pertanian No. 1 Tahun 2007 tentang Bahan Aktif yang Dilarang dan Pestisida Terbatas;
5. Peraturan Menteri Kehutanan No 30 Tahun 2009 tentang Prosedur Implementasi untuk Mengurangi Emisi dari Deforestasi dan Degradasi Hutan (REDD);
6. Keputusan Menteri Lingkungan Hidup No. 31 Tahun 2009 tentang Arah dan Kontrol Penerapan Manajemen Lingkungan, Ekolabel, Produksi Bersih, dan Penggunaan Teknologi Lingkungan di Daerah;
7. Keputusan Menteri Lingkungan Hidup No. 31 Tahun 2009 tentang Arah dan Kontrol Penerapan Manajemen Lingkungan, Ekolabel, Produksi Bersih, dan Penggunaan Teknologi Lingkungan di Daerah;
8. Keputusan Menteri Lingkungan Hidup No. 9 Tahun 2010 tentang Pedoman Keluhan Masyarakat dan Penanganan Keluhan yang Disebabkan oleh Polusi dan/atau Degradasi;
9. Peraturan Menteri Kehutanan No. 6 Tahun 2010 tentang Norma, Standar, Prosedur dan Kriteria untuk Pengelolaan Hutan di Unit Pengelolaan Hutan Lindung;
10. Keputusan Menteri Lingkungan Hidup No. 5 Tahun 2012 tentang Jenis Rencana Bisnis dan/atau

- Kegiatan yang tunduk pada Analisis Dampak Lingkungan;
11. Permen Lingkungan Hidup No. 17 Tahun 2012 tentang Pedoman Keterlibatan Masyarakat dalam Proses Penilaian Dampak dan Izin Lingkungan;
  12. Keputusan Menteri Lingkungan Hidup No. 17 Tahun 2012 tentang Partisipasi Publik dalam AMDAL dan Izin Lingkungan;
  13. Keputusan Menteri Lingkungan Hidup No. 15 Tahun 2013 tentang Pengukuran, Pemberitahuan, dan Verifikasi Tindakan Mitigasi untuk Perubahan Iklim;
  14. Peraturan Menteri Pertanian No. 64 Tahun 2013 tentang Sistem Pertanian Organik;
  15. Peraturan Menteri Pertanian No. 107 Tahun 2014 tentang Pengawasan Pestisida;
  16. Keputusan Menteri Lingkungan Hidup dan Kehutanan No. 6347/MenLHK-PKTL/IPSDH/PLA.1/11/2016 tentang Penetapan Peta Indikatif Penundaan Pemberian Izin Baru Pemanfaatan Hutan, Penggunaan Kawasan Hutan, dan Perubahan Peruntukan Kawasan Hutan dan Areal Penggunaan Lain (Revisi XI);
  17. Peraturan Menteri Perindustrian No. 40/M-IND/PER/7/2016 tentang Pedoman Teknis untuk Pengembangan Kawasan Industri;
  18. Peraturan Menteri Lingkungan Hidup dan Kehutanan No 72 Tahun 2017 tentang Pedoman Pelaksanaan Pengukuran, Pelaporan dan Verifikasi Aksi dan Sumber Daya Pengendalian Perubahan Iklim;
  19. Peraturan Kementerian Lingkungan Hidup dan Kehutanan No. P.31/MENLHK/SETJEN/SET/1/5/2017 tentang Pedoman Pengarusutamaan Gender di Lingkungan dan Kehutanan dan Peraturan Menteri Kehutanan No. P.65/Menhut-II/2011 tentang Pedoman Perencanaan dan Penganggaran Responsif Gender di Sektor Kehutanan;
  20. Keputusan Menteri Lingkungan Hidup dan Kehutanan No. P.22/MENLHK/SETJEN/SET.1/3/2017 tentang Prosedur Pengaduan tentang Polusi dan/atau Kerusakan Lingkungan dan/atau Penghancuran Hutan;
  21. Peraturan Menteri Perhubungan No. 11 Tahun 2017 tentang Perubahan Ketiga atas Peraturan Menteri Perhubungan Nomor PM 75 Tahun 2015 tentang Penyelenggaraan Analisis Dampak Lalu Lintas;
  22. Keputusan Menteri Lingkungan Hidup dan Kehutanan No. 26/2018 tentang Pedoman Penyusunan dan Peninjauan dan Pemeriksaan Dokumen Lingkungan dalam Penerapan Pengajuan Tunggal secara langsung;
  23. Keputusan Menteri Lingkungan Hidup dan Kehutanan No. P.23/MENLHK/SETJEN/KUM.1/7/2018 tentang Kriteria untuk Bisnis dan/atau Kegiatan yang Memerlukan Perubahan Izin;
  24. Keputusan Menteri Lingkungan Hidup dan Kehutanan No. P.24/MENLHK/SETJEN/KUM.1/7/2018 tentang Pembebasan Kewajiban untuk Mempersiapkan AMDAL untuk Bisnis dan/atau Kegiatan yang Berlokasi di Kabupaten/Kota Menyiapkan Detail Rencana Tata Ruang;
  25. Keputusan Menteri Lingkungan Hidup dan Kehutanan No. P.25/MENLHK/SETJEN/KUM.1/7/2018 tentang Pedoman Penentuan Bisnis dan/atau Kegiatan yang Memerlukan Tindakan Pengelolaan dan Pemantauan Lingkungan dan Surat Pernyataan tentang Pengelolaan dan Pemantauan Lingkungan;
  26. Keputusan Menteri Lingkungan Hidup dan Kehutanan No. 38 Tahun 2019 tentang Jenis Rencana Bisnis dan/atau Kegiatan yang tunduk pada Analisis Dampak Lingkungan;
  27. Peraturan Menteri Pekerjaan Umum dan Perumahan Rakyat No. 21/PRT/M/2019 tentang Pedoman Sistem Manajemen Keselamatan Konstruksi;
  28. Peraturan Menteri Pertanian No. 38 Tahun 2020 tentang Penyelenggaraan Sertifikasi Perkebunan Kelapa Sawit Berkelanjutan Indonesia;

29. Peraturan Menteri Energi dan Sumber Daya Mineral No. 11 Tahun 2021 tentang Pelaksanaan Usaha Ketenagalistrikan.

#### **Local Government Regulations**

1. Peraturan Gubernur Jawa Timur No. 30 Tahun 2011 tentang Jenis Usaha dan/atau Kegiatan yang Wajib Dilengkapi Upaya Pengelolaan Lingkungan Hidup (UKL) dan Upaya Pemantauan Lingkungan Hidup (UPL);
2. Peraturan Daerah Jawa Timur No. 5 Tahun 2012 tentang Rencana Tata Ruang Wilayah 2011- 2031.

#### **PLN Regulations**

1. Keputusan Direksi PLN No. 134.K/DIR/2007 tentang Kebijakan Lingkungan, Kesehatan dan Keselamatan Kerja;
2. Keputusan PT PLN (Persero) No. 200.K/DIR/2009 tentang Revisi Keputusan No. 059.K/DIR/2009 tentang Sistem Evaluasi Tingkat Kinerja PT PLN (Persero);
3. Keputusan PT PLN (Persero) No. 114.K/DIR/2010 tentang Tenaga Trafo;
4. Keputusan Direksi PLN (Keputusan PLN) No. 473/2010 Standar Konstruksi untuk Jaringan Listrik Tenaga Rendah (untuk jalur distribusi);
5. Keputusan Direksi PLN No. 606/2010 Standar Konstruksi untuk Tegangan Listrik Menengah;
6. Keputusan Direksi PLN No. 605/2010 Standar Konstruksi untuk Gardu Distribusi dan Gardu Pemancar;
7. Peraturan Dewan Direksi No. 501/2012 tentang Keterbukaan Informasi Publik (KIP);
8. Keputusan Direksi PLN No. 0520-2.K/DIR/2014 tentang Pengumpulan Pedoman Perawatan untuk Peralatan Stasiun Utama;
9. Directors Regulation of PT PLN (Persero) No. 0250.K/DIR/2016 concerning Occupational Safety Guidelines at PT PLN (Persero);
10. Directors Regulation of PT PLN (Persero) No. 0251.K/DIR/2016 concerning Electrical Installation Safety Guidelines at PT PLN (Persero);
11. Directors Regulation of PT PLN (Persero) No. 0252.K/DIR/2016 concerning Public Safety Guidelines at PT PLN (Persero);
12. Directors Decree of PT PLN (Persero) No. 0325.K/DIR/2021 concerning Contractor Safety Management System;
13. Keputusan Direksi PLN (Keputusan PLN) tentang Pengelolaan Sampah FABA dan gypsum;
14. Keputusan Direksi PLN No. 0028.P/DIR/2015 tentang Struktur Organisasi, Tanggung jawab dan Tugas Utama di Direktorat Manajemen Sumber Daya Manusia PT PLN (Persero);
15. Keputusan Direksi PLN No. 0250.P/DIR/2016 tentang Pedoman Keselamatan Kerja di PT PLN (Persero);
16. Keputusan Direksi PLN No. 0252.P/DIR/2016 tentang Pedoman Keselamatan Publik dalam PT PLN (Persero);
17. Peraturan Direktur PLN No. 0179.P/DIR/2016 tentang Struktur Organisasi;
18. Peraturan Direktur PLN No. 0225.P/DIR/2016 tanggal 24 Mei 2016 dan Keputusan PT PLN (Persero) No. 049/SDM.01.03/DIVORG/2016 tentang Organisasi UIP dan Unit Pelaksana.

#### **B.Social Regulations Acts**

1. Undang-Undang No. 5 Tahun 1960 tentang Peraturan Dasar tentang Pokok-Pokok Agraria;
2. Undang-Undang No. 7 Tahun 1984 tentang Ratifikasi Konvensi tentang Penghapusan Segala Bentuk Diskriminasi terhadap Perempuan (CEDAW);

3. UU No. 39 Tahun 1999 tentang Hak Asasi Manusia;
4. UU No. 11 Tahun 2005 tentang Ratifikasi Kovenan Internasional tentang Hak Ekonomi, Sosial dan Budaya (ICESCR);
5. Undang-Undang No. 11 Tahun 2009 tentang Kesejahteraan Sosial, dengan perubahan Undang-Undang No.14 Tahun 2019 tentang Pekerja Sosial;
6. Undang-Undang No. 30 Tahun 2009 tentang Ketenagalistrikan, dengan perubahan Undang- Undang No. 11 Tahun 2020 tentang Cipta Kerja;
7. Undang-Undang No. 13 Tahun 2011 tentang Penanganan Fakir Miskin;
8. Undang-Undang No. 2/2012 tentang Pengadaan Tanah untuk Pembangunan demi Kepentingan Umum;
9. Undang-Undang No. 7 Tahun 2012 tentang Penanganan Konflik Sosial.

#### **Government Regulations**

1. Peraturan Pemerintah No. 23 Tahun 2014 tentang Perubahan Atas Peraturan Pemerintah Nomor 14 Tahun 2012 tentang Kegiatan Usaha Penyediaan Tenaga Listrik;
2. Peraturan Pemerintah No. 2 Tahun 2015 tentang Implementasi Undang-Undang No. 7 Tahun 2012 tentang Penanganan Konflik Sosial;
3. Peraturan Pemerintah No. 45 Tahun 2017 tentang Partisipasi Masyarakat dalam Pengelolaan Pemerintahan Lokal;
4. Peraturan Pemerintah No. 62 Tahun 2018 tentang Mitigasi Dampak Sosial pada Masyarakat dalam Pengadaan Tanah untuk Pembangunan Nasional;
5. Peraturan Pemerintah No. 18 Tahun 2021 tentang Hak Pengelolaan, Hak Atas Tanah, Satuan Rumah Susun dan Pendaftaran Tanah;
6. Peraturan Pemerintah No. 19 Tahun 2021 tentang Penyelenggaraan Pengadaan Tanah bagi Pembangunan untuk Kepentingan Umum.

#### **Presidential Instructions and Regulation**

1. Instruksi Presiden No. 9 Tahun 2000 tentang Pengarusutamaan Gender dalam Pembangunan Nasional;
2. Instruksi Presiden No. 10/2011 tentang Penangguhan Pemberian Izin Baru dan Peningkatan Tata Kelola Hutan Alam dan Lahan Gambut;
3. Instruksi Presiden No. 1/2016 tentang Akselerasi Implementasi Strategi Nasional
4. Peraturan Presiden No. 4/2016 tentang Percepatan Pembangunan Infrastruktur Ketenagalistrikan;
5. Peraturan Presiden No. 88/2017 tentang Penyelesaian Penguasaan Tanah di Kawasan Hutan;
6. Peraturan Presiden No. 56/2018 tentang Perubahan Kedua dari Peraturan Presiden No. 3/2016 yang mencantumkan Proyek Strategis Nasional.

#### **Ministry Regulations**

1. Peraturan Kepala Badan Pertahanan Nasional No. 5 Tahun 2012 tentang Pedoman Teknis Pengadaan Tanah, dengan perubahan Permen Agraria/Kepala BPN No. 6 Tahun 2015 tentang Perubahan Atas Peraturan Kepala Badan Pertahanan Nasional Nomor 5 Tahun 2012 tentang Petunjuk Teknis Pelaksanaan Pengadaan Tanah;
2. Peraturan Menteri Dalam Negeri No. 1 Tahun 2016 tentang Pengelolaan Aset Desa;
3. Peraturan Menteri Energi dan Sumber Daya Mineral No. 33 Tahun 2016 Solusi Teknis untuk Tanah, Bangunan, dan/atau Pohon yang Dimiliki oleh Masyarakat di dalam Kawasan Hutan untuk Percepatan Pembangunan Infrastruktur Listrik;

4. Peraturan Menteri Keuangan No. 56 Tahun 2017 tentang Perubahan atas Peraturan Menteri Keuangan No. 101/PMK01/2014 tentang Penilaian Publik, dengan perubahan Peraturan Menteri Keuangan No. 228/PMK.01/2019 tentang perubahan Kedua Atas Peraturan Menteri Keuangan Nomor 101/PMK.01/2014 Tentang Penilaian Publik;
5. Peraturan Menteri Energi dan Sumber Daya Mineral No. 27 Tahun 2018 tentang Kompensasi untuk Tanah, Bangunan, dan/atau Pabrik di Bawah Ruang Bebas Saluran Transmisi Listrik
6. Peraturan Menteri Desa, Pembangunan Daerah Tertinggal, dan Transmigrasi 16 Tahun 2019 tentang Musyawarah Desa;
7. Peraturan Menteri Energi dan Sumber Daya Mineral No. 2 Tahun 2019 tentang Peraturan Menteri Energi dan Sumber Daya Mineral tentang Perubahan Atas Peraturan Menteri Energi dan Sumber Daya Mineral Nomor 18 Tahun 2015 tentang Ruang Bebas dan Jarak Bebas Minimum Pada Saluran Udara Tegangan Tinggi, Saluran Udara Tegangan Ekstra Tinggi, dan Saluran Udara Tegangan Tinggi Arus Searah Untuk Penyaluran Tenaga Listrik;
8. Peraturan Menteri Agraria/Kepala BPN No. 18 Tahun 2019 tentang Tata Cara Penatausahaan Tanah Ulayat Kesatuan Masyarakat Hukum Adat;
9. Peraturan Menteri Agraria/Kepala BPN No. 17 Tahun 2019 tentang Izin Lokasi, dengan perubahan Peraturan Menteri Agraria/Kepala BPN No. 13 Tahun 2020 tentang Perubahan atas Peraturan Menteri Agraria dan Tata Ruang/Kepala Badan Pertahanan Nasional Nomor 17 Tahun 2019 tentang Izin Lokasi;
10. Peraturan Menteri Lingkungan Hidup dan Kehutanan No. 17 Tahun 2020 tentang Hutan Adat dan Hutan Hak.
11. Peraturan Menteri Badan Usaha Milik Negara No. PER-05/MBU/04/2021 tentang Program Tanggung Jawab Sosial dan Lingkungan Badan Usaha Milik Negara.

#### **PLN Regulations**

1. Keputusan Direksi PLN No. 605 Tahun 2010 tentang Standar Konstruksi untuk Gardu Distribusi Daya dan Gardu Switching;
2. Keputusan Direksi PLN NO. 4606 Tahun 2010 tentang Standar Konstruksi untuk Jaringan Tenaga Tegangan Menengah;
3. Keputusan Direksi PLN No. 473 Tahun 2010 tentang Standar Konstruksi untuk Jaringan Listrik Tegangan Rendah;
4. Keputusan Direksi PLN No. 366 Tahun 2007 tentang Tanggung Jawab Sosial Perusahaan;
5. Keputusan Direksi PLN No. 344 Tahun 2016 tentang Prosedur Pengadaan Tanah di PLN;
6. Keputusan Direksi PLN No. 289 Tahun 2013 tentang Pengadaan Tanah untuk Tujuan Penyediaan Listrik, Biaya Operasional Pengadaan Tanah, dan Biaya Kompensasi Operasional.

Appendix 5 :List of Standard Operational Procedure in Distribution Lines Construction

**National Regulations and Standards**

- a. Indonesian National Standard (SNI) No. 04-0225-2000 concerning Electrical Installations for Buildings;

**PLN Standards**

- a. Directors Decree of PT PLN (Persero) No. 473.K/DIR/2010 concerning Construction Standards of Low-Voltage Electric Power Networks
- b. Directors Decree of PT PLN (Persero) No. 474.K/DIR/2010 concerning Construction Standards of Electric Power Networks;
- c. Directors Decree of PT PLN (Persero) No. 475.K/DIR/2010 concerning Engineering Design Criteria of Electric Power Distribution Construction;
- d. Directors Decree of PT PLN (Persero) No. 605.K/DIR/2010 concerning Construction Standards of Distribution Substation and Power Switching Substation;
- e. Directors Decree of PT PLN (Persero) No. 606.K/DIR/2010 concerning Construction Standards of Medium Voltage Power;
- f. Procedure No. PT-HSSE-27 concerning Environmental and Social Safeguard Procedures for Distribution Network Works Performed by Third Parties at PT PLN (Persero);

**PLN UID Jatim's Internal Procedures**

- a. Procedure of PLN UID Jatim No. PK.DIS.01. Evaluation of Medium Voltage Network Faults
- b. Procedure of PLN UID Jatim No. PK.JAR.01 Inspeksi Gardu Pasangan Dalam
- c. Procedure of PLN UID Jatim No. PK.JAR.02 Inspeksi Gardu Pasangan Luar
- d. Procedure of PLN UID Jatim No. PK.JAR.03 Medium Voltage Network Inspections
- e. Procedure of PLN UID Jatim No. PK.JAR.04 Low Voltage Network Inspections
- f. Procedure of PLN UID Jatim No. PK.JAR.05 Pole Mounted Substation Inspection
- g. Procedure of PLN UID Jatim No. PK.JAR.06 Medium Voltage Network Management
- h. Procedure of PLN UID Jatim No. PK.JAR.07 Low Voltage Network Management
- i. Procedure of PLN UID Jatim No. PK.JAR.08 Pole Mounted Substation Fault Management
- j. Procedure of PLN UID Jatim No. PK.JAR.09 Diesel Power Plant Maintenance
- k. Procedure of PLN UID Jatim No. PK.JAR.10 Diesel Power Plant Operation
- l. Procedure of PLN UID Jatim No. PK.JAR.11 Low Voltage Network Maintenance
- m. Procedure of PLN UID Jatim No. PK.JAR.12 Medium Voltage Network Maintenance
- n. Procedure of PLN UID Jatim No. PK.JAR.13 Concrete Substation Maintenance
- o. Procedure of PLN UID Jatim No. PK.KON.01 Supervision Construction for Distribution Network
- p. Procedure of PLN UID Jatim No. PK.KON.02 Prestressed Concrete Pole Construction
- q. Procedure of PLN UID Jatim No. PK.HAR.01 Cubicle 20 kV Maintenance
- r. Procedure of PLN UID Jatim No. PK.HAR.05 Digital kWh Meter Maintenance

Appendix 6 : Gas Chromatography and Wipe Laboratory Test Result



LABORATORIUM  
PT. HYPROWIRA ADHITAMA



SERTIFIKAT HASIL UJI  
NO : SHU/43288/12-22

HASIL ANALISA HANYA BERHUBUNGAN TERHADAP SAMPEL YANG DIUJI

Informasi Pelanggan		Informasi Sampel	
Kepada	: PT PLN (Persero) UID Jawa Timur	Pengambilan Sampel Oleh	: Customer
Alamat	: Jawa Timur	Metode Sampling	: -
Up	: Syifaul Bashori	Tanggal Penerimaan Sampel	: 12 Desember 2022
Tanggal Laporan	: 19 Desember 2022	Tanggal Pengujian	: 12 – 19 Des 2022

Kode Sampel	Tipe Sampel	Titik Pengambilan Sampel	Tanggal Pengambilan Sampel	Tipe Peralatan
HA/432 A/22	Oli Transformator	GD UP3 BWG	15 Agustus 2022	UP3 Banyuwangi GD UP3 BWG-026

Metode	Analisa	Hasil
IEC 61619:97	Total PCBs (mg/kg)	95,24

Keterangan :

Limit PCB s berdasarkan Permen KLHK No.29 Tahun 2020 = 50 mg/kg



LABORATORIUM  
PT. HYPROWIRA ADHITAMA



SERTIFIKAT HASIL UJI  
NO : SHU/43288/12-22

HASIL ANALISA HANYA BERHUBUNGAN TERHADAP SAMPEL YANG DIUJI

Informasi Pelanggan		Informasi Sampel	
Kepada	: PT PLN (Persero) UID Jawa Timur	Pengambilan Sampel Oleh	: Customer
Alamat	: Jawa Timur	Metode Sampling	: -
Up	: Syifaul Bashori	Tanggal Penerimaan Sampel	: 12 Desember 2022
Tanggal Laporan	: 19 Desember 2022	Tanggal Pengujian	: 12 – 19 Des 2022

Kode Sampel	Tipe Sampel	Titik Pengambilan Sampel	Tanggal Pengambilan Sampel	Tipe Peralatan
HA/432 V2/22	Oli Transformator	JBR	-	62, UP3 Jember

Metode	Analisa	Hasil
IEC 61619:97	Total PCBs (mg/kg)	290,12

Keterangan :

Limit PCB s berdasarkan Permen KLHK No.29 Tahun 2020 = 50 mg/kg

SERTIFIKAT HASIL UJI  
NO : SHU/43288/12-22

HASIL ANALISA HANYA BERHUBUNGAN TERHADAP SAMPEL YANG DIUJI

Informasi Pelanggan		Informasi Sampel	
Kepada	: PT PLN (Persero) UID Jawa Timur	Pengambilan Sampel Oleh	: Customer
Alamat	: Jawa Timur	Metode Sampling	: -
Up	: Syifaal Bashori	Tanggal Penerimaan Sampel	: 12 Desember 2022
Tanggal Laporan	: 19 Desember 2022	Tanggal Pengujian	: 12 – 19 Des 2022

Kode Sampel	Tipe Sampel	Titik Pengambilan Sampel	Tanggal Pengambilan Sampel	Tipe Peralatan
HA/432 N/22	Oli Transformator	Gudang Sumberkolak	29 November 2022	DISJATIM.STB.007 UP3 Situbondo

Metode	Analisa	Hasil
IEC 61619-97	Total PCBs (mg/kg)	< 0,01

Keterangan :

Limit PCB s berdasarkan Pemen KLHK No.29 Tahun 2020 = 50 mg/kg

SERTIFIKAT HASIL UJI  
NO : SHU/43288/12-22

HASIL ANALISA HANYA BERHUBUNGAN TERHADAP SAMPEL YANG DIUJI

Informasi Pelanggan		Informasi Sampel	
Kepada	: PT PLN (Persero) UID Jawa Timur	Pengambilan Sampel Oleh	: Customer
Alamat	: Jawa Timur	Metode Sampling	: -
Up	: Syifaal Bashori	Tanggal Penerimaan Sampel	: 12 Desember 2022
Tanggal Laporan	: 19 Desember 2022	Tanggal Pengujian	: 12 – 19 Des 2022

Kode Sampel	Tipe Sampel	Titik Pengambilan Sampel	Tanggal Pengambilan Sampel	Tipe Peralatan
HA/432 B1/22	Oli Transformator	BS.KDR	-	18.1992 UP3 Kediri

Metode	Analisa	Hasil
IEC 61619-97	Total PCBs (mg/kg)	< 0,01

Keterangan :

Limit PCB s berdasarkan Pemen KLHK No.29 Tahun 2020 = 50 mg/kg

SERTIFIKAT HASIL UJI  
NO : SHU/223044/08-23

HASIL ANALISA HANYA BERHUBUNGAN TERHADAP SAMPEL YANG DIUJI

Informasi Pelanggan	
Kepada	: PT PLN (Persero) UID Jawa Timur
Alamat	: Jawa Timur
Up	: Bpk. Syifaul Bashori
Tanggal Laporan	: 17 November 2023

Informasi Sampel	
Pengambilan Sampel Oleh	: Customer
Metode Sampling	: -
Tanggal Penerimaan Sampel	: 10 November 2023
Tanggal Pengujian	: 10 – 17 November 2023

Kode Sampel	HA/223 A/23
Tipe Sampel	Hasil Uji Usap Transformator
Titik Sampling	UP3 Madiun, CRB

Tanggal Sampling	
Tanggal Sampling	13 Juli 2023
Tipe Peralatan	Kode sampel : Uji Usap 1 No Seri Peralatan : 92805170 Tahun : 1993 Daya : 200 kVA Frekuensi : 50 Hz Petugas Sampling : BGS

Metode	Analisa	Hasil Uji	Limit		
			Min	Max	Acuan
IEC 61619 : 97	Total PCBs (µg/100 cm <sup>2</sup> )	< 0.05	-	10	Permen LHK No.29 Tahun 2020

Note :

SERTIFIKAT HASIL UJI  
NO : SHU/208091/09-23

HASIL ANALISA HANYA BERHUBUNGAN TERHADAP SAMPEL YANG DIUJI

Informasi Pelanggan	
Kepada	: PT PLN (Persero) UID Jawa Timur
Alamat	: Jawa Timur
Up	: Bpk. Syifaul Bashori
Tanggal Laporan	: 19 September 2023

Informasi Sampel	
Pengambilan Sampel Oleh	: Pelanggan
Metode Sampling	: -
Tanggal Penerimaan Sampel	: 11 September 2023
Tanggal Pengujian	: 11 – 18 September 2023

Kode Sampel	HA/208 A/23
Tipe Sampel	Hasil Uji Usap Transformator
Titik Sampling	UP3 Banyuwangi

Tanggal Sampling	
Tanggal Sampling	15 Juli 2023
Tipe Peralatan	Kode sampel : Uji Usap 2023-No.01 No Seri Peralatan : 50752 Tahun : 1992 Daya : 160 kVA Frekuensi : 50 Hz Jenis Peralatan : -

Metode	Analisa	Hasil Uji	Limit		
			Min	Max	Acuan
IEC 61619 : 97	Total PCBs (µg/100 cm <sup>2</sup> )	< 0.05	-	10	Permen LHK No.29 Tahun 2020

Note :

Appendix 7 : Screening Form Result

No	Nama Kegiatan	Perencanaan							Penapisan				
		kapasitas (kVA)	Panjang Jaringan (kms)		Desa	Kecamatan	Kabupaten	Provinsi	tahun Pelaksanaan	Kawasan Keamanan Hayati	Masyarakat Adat (IPs)	Peningkatan	Penggunaan Lahan Pribadi
			TM	TR									
A	shahul Hakim - Pasang Baru	.6		290	lirto Mulyo Gg 6	landungan	ab. Malang	awa Timur	024	idak	idak	idak	idak
A	sshofa Residence - Pasang Baru	2,5		183	sumber Sukoko	ajinan	ab. Malang	awa Timur	024	idak	idak	idak	idak
E	ambang - Pasang Baru	0,6		085	sumber putih	ajak	ab. Malang	awa Timur	024	idak	idak	idak	idak

	E eng kel Las Ant on - Pas ang Bar u	,6		,1 9 8	n K al is a n g kr a h R t 2 5 R w o 5 S u m b er ot o	D ono mul yo	K ab. Mal ang	J awa Tim ur	02 4	t idak	t idak	id ak	t ida k
	E eni Su mar son o - Pas ang Bar u	,3		,1 5 4	I A p di lah	P akis	K ab. Mal ang	J awa Tim ur	02 4	t idak	t idak	id ak	t ida k
	W edy Win du Har tant o - Pas ang Bar u	,2		,1 9 8	,1 2 2	M ojol ang u	K ota Mal ang	J awa Tim ur	02 4	t idak	t idak	id ak	t ida k

					041									
	Eddy Kristiadi - Pasang Baru	4,			200	I Borokandang DSDengkol	Singsari	Kab. Malang	Jawa Timur	024	idak <sup>t</sup>	idak <sup>t</sup>	idak	idak <sup>t</sup>
	Fak Teknik Sipil - Pasang Baru	2,5				Interusaan Dening Malang	Bandungrejo	Kota Malang	Jawa Timur	024	idak <sup>t</sup>	idak <sup>t</sup>	idak	idak <sup>t</sup>
	Criya Randu Agung - Pasang Baru	8,2			147	145	Tajinan	Kab. Malang	Jawa Timur	024	idak <sup>t</sup>	idak <sup>t</sup>	idak	idak <sup>t</sup>

0	uru h Akb ar - Pas ang Bar u	,3			ng I J o y o s u k o A g u n g V	L owo kwa ru	K ota Mal ang	J aw a Tim ur	02 4	t idak	t idak	id ak	t ida k
1	arli Nu gro ho - Pas ang Bar u	6,5			I P a k i s j a j a r D s P a j i s j a j a r	P akis	K ab. Mal ang	J aw a Tim ur	02 4	t idak	t idak	id ak	t ida k
2	r Ric ky He ndrik Eg am - Per uba han Da ya	55, 5			el A s r i k a t o n K e c c P a k i s	P akis	K ab. Mal ang	J aw a Tim ur	02 4	t idak	t idak	id ak	t ida k
3	raw an Her i Pra	47			I R a w i s	S uku n	K ota Mal ang	J aw a Tim ur	02 4	t idak	t idak	id ak	t ida k

	o - Pas ang Bar u				ar i R t 1 0 R w 5 K el M ul y or ej o									
4	ary ono - Pas ang Bar u	,9		, 2 0 3	I T el a ga W ar n a B lo k F	owo kwa ru	ota Mal ang	aw a Tim ur	02 4	idak	idak	id ak	ida k	
5	ol Kul su m - Pas ang Bar u	1,7		, 3 6 3	n B a n d ur ot o D S S e m p ol P a g a k	aga k	ab. Mal ang	aw a Tim ur	02 4	idak	idak	id ak	ida k	

6	K ol Ru kos Su aib, Val enti na Yuli & Tri Ca hyo - Pas ang Bar u	4,2	, 1 4 2	, 1 4 2	I Ti rt o U to m o G g V M al a n g	au D	ab. Mal ang K	aw a Tim ur J	02 4	idak t	idak t	id ak	ida k t
7	L ab Kes ehan - Pas ang Bar u	2			ar ya Ti mur 1 0 1/ 1 P ur wa nt or o	limb ing B	ota Mal ang K	aw a Tim ur J	02 4	idak t	idak t	id ak	ida k t
8	M uha mm ad Alfa n Ro zaq - Pas ang Bar u	,5		, 1 2 6	Jl Ra ya Ba ka la n R t 4 R w	ulul awa ng B	ab. Mal ang K	aw a Tim ur J	02 4	idak t	idak t	id ak	ida k t

					1 B a k a l a n									
9	F om pa Air De sa Pur wod ad i- Pas ang Bar u	,7		. 0 1 5	u m b er Bl i m bi ng R t 0 4 R w 0 8 D s P ur w o d a d i	T irtoy udo	K ab. Mal ang	J aw a Tim ur	02 4	t idak	t idak	id ak	t idak	
0	F r Ja war a Lan d- Pas ang Bar u	6,8		. 2 0 9	I T a m e ng D s N gi jo K e c K ar a	K ara ngpl oso	K ab. Mal ang	J aw a Tim ur	02 4	t idak	t idak	id ak	t idak	

					ng pl o s o								
1	ich ees e Kuli ner Ind one sia - Pas ang Bar u	F 6			I Si m p a n g B o r o b u d u r	L owo kwa ru	K ota Mal ang	J awa a Tim ur	02 4	t idak	t idak	id ak	t idak
2	aifu l Har iadi - Pas ang Bar u	S ,6		. 0 4 8	I Si d o d a di Ke p a n j e n	K epa njen	K ab. Mal ang	J awa a Tim ur	02 4	t idak	t idak	id ak	t idak
3	igit Ru diy ant o- Per uba han Da ya	S 2		. 0 8 8	s M ul y oj at i J at is ar i	T ajin an	K ab. Mal ang	J awa a Tim ur	02 4	t idak	t idak	id ak	t idak
4	iti Mai sya roh	S ,5		. 1 8 7	I Ti rt o	D au	K ab. Mal ang	J awa a Tim ur	02 4	t idak	t idak	id ak	t idak

	(Ke bun Jer uk Ab ah Ma ky) - Pas ang Bar u				S e n t o n o A t a s										
5	elly Sa nja ya (Lili ana Tiu s Gra ce) - Per uba han Da ya	3	, 0 0 3		Jl Si h a b u- H a b u M a l a n g	uku n	S	ota Mal ang	K	aw a Tim ur	02 4	idak <sup>t</sup>	idak <sup>t</sup>	id ak	ida k <sup>t</sup>

NO.	Nama Kegiatan	Perencanaan							Penapisan				
		Kapasitas (kVA)	Panjang Jaringan (km)		Desa	Kecamatan	Kabupaten	Provinsi	Tahun Pelaksanaan	Kawasan Keaneke- ragaman Hayati	Masyarakat Adat (IPs)	Warisan Budaya	Penggunaan Lahan Pribadi
			JTM	JTR									
1	PB_PENGGILINGAN_DAGING_SUTARNO (A)	33	0	0.049	NGROWO	ULP BOJONEGORO	BOJONEGORO	JAWA TIMUR	10 Maret 2023	Tidak	Tidak	Tidak	Tidak
2	PD_BRI_UNIT_BUNGKAL/AGUS P (A)	23	0.000	0.096	BUNGKAL	ULP BOJONEGORO	BOJONEGORO	JAWA TIMUR		Tidak	Tidak	Tidak	Tidak
3	PB_POMPANISASI_PILANG (A)	33	0	0.077	PILANGGEDE	ULP BOJONEGORO	BOJONEGORO	JAWA TIMUR	08 Maret 2023	Tidak	Tidak	Tidak	Tidak
4	PD SMK BUDI MULYA_105 KVA (A)	105	0	0	SAMBENG	ULP PADANGAN	BOJONEGORO	JAWA TIMUR	15 Maret 2023	Tidak	Tidak	Tidak	Tidak
5	PB_KOL_BEKTIHARJO_56600VA (A)	56.6	0.015	0	bektiharjo	ULP TUBAN	TUBAN	JAWA TIMUR	13 Juli 2023	Tidak	Tidak	Tidak	Tidak
6	PB_SMARTFREN_6600VA (A)	6.6	0	0.082	SADANG	ULP JATIROGO	TUBAN	JAWA TIMUR	30 Mei 2023	Tidak	Tidak	Tidak	Tidak
7	CV_BANYU_BIRU_ALAM_33000VA (A)	33	0	0.169	MANDER	ULP JATIROGO	TUBAN	JAWA TIMUR	31 Mei 2023	Tidak	Tidak	Tidak	Tidak
8	PB_KANDANG_OKI_16500VA	16.5	0	0.082	BETET	ULP PADANGAN	PADANGAN	JAWA TIMUR	09 Juni 2023	Tidak	Tidak	Tidak	Tidak
9	PB PT PP	131	0.03	0	Brondong	ULP BRONDONG	LAMONGAN	JAWA TIMUR	23 Juni 2023	Tidak	Tidak	Tidak	Tidak
10	PB PR ABABIL LAND 20800VA	20.8	0	0.97	TAKERANGLATING	ULP LAMONGAN	LAMONGAN	JAWA TIMUR	20 Juni 2023	Tidak	Tidak	Tidak	Tidak
11	PANJI PRATAMA	66	0.028	0	Jl. Veteran	ULP BOJONEGORO	BOJONEGORO	JAWA TIMUR	26 Juli 2023	Tidak	Tidak	Tidak	Tidak
12	ISWATI	10.6	0	0.33	NGAWUN	ULP BOJONEGORO	BOJONEGORO	JAWA TIMUR	07 Juli 2023	Tidak	Tidak	Tidak	Tidak
13	PJSP LOT 2	4330	2.658	0	BOURNO	ULP SUMBERJO	BOJONEGORO	JAWA TIMUR	18 Juli 2023	Tidak	Tidak	Tidak	Tidak
14	SRI WAHYUNI	10.6	0	0	TRENGGULUNAN	ULP BOJONEGORO	BOJONEGORO	JAWA TIMUR	14 Juli 2023	Tidak	Tidak	Tidak	Tidak
15	CV TIGA BINTANG SAKTI	33	0.025	0	TROJALU	ULP SUMBERJO	BOJONEGORO	JAWA TIMUR	03 Juli 2023	Tidak	Tidak	Tidak	Tidak
16	PESTA KONSTRUKSI INDONESIA	33	0	0	TLIWENG	ULP BOJONEGORO	BOJONEGORO	JAWA TIMUR	08 Agustus 2023	Tidak	Tidak	Tidak	Tidak
17	PD KONVEKSI M YUDHA	6.6	0	0.023	Jl.Gajahmada	ULP BOJONEGORO	BOJONEGORO	JAWA TIMUR	13 September 2023	Tidak	Tidak	Tidak	Tidak
18	PT DJIBRIAN ALEXA S	41.5	0	1.12	Mudung	ULP BABAT	LAMONGAN	JAWA TIMUR	07 Oktober 2023	Tidak	Tidak	Tidak	Tidak
19	KOL PR TIARA	10.8	0	0.046	Bakalanpule	ULP LAMONGAN	LAMONGAN	JAWA TIMUR	27 September 2023	Tidak	Tidak	Tidak	Tidak
20	SUTRISNO	16.5	0	0.041	Jl.Raya mantup	ULP LAMONGAN	LAMONGAN	JAWA TIMUR	10 Oktober 2023	Tidak	Tidak	Tidak	Tidak

1	Andreas Kurniawan	66000		Dn Pohcek Ds Baujeng (-7.623724,112.733012)	Beji	Kab. Pasuruan	JAWA TIMUR	2023	Tidak	Ya	Tidak	Tidak	Tidak	Ya
2	Arief Slamet	10600		Jl Raya Bayoass Pandaan (-7.659979,112.692223)	Pandaan	Kab. Pasuruan	JAWA TIMUR	2023	Tidak	Ya	Tidak	Tidak	Tidak	Ya
3	CV Anugrah Ilahi	197000		Dn Raos Baru (-7.557215,112.683506)	Gempol	Kab. Pasuruan	JAWA TIMUR	2023	Tidak	Ya	Tidak	Tidak	Tidak	Ya
4	CV Harvest Berkah Madani / Deby Afandi	13200		Dn Nyangkring Jl Bangil Pandaan (-7.631724,112.724805)	Beji	Kab. Pasuruan	JAWA TIMUR	2023	Tidak	Ya	Tidak	Tidak	Tidak	Ya
5	CV Karya Berkah Plastindo	197000		Jl Jambu Patebon, Desa Kebonwaris (-7.643080,112.707651)	Pandaan	Kab. Pasuruan	JAWA TIMUR	2023	Tidak	Ya	Tidak	Tidak	Tidak	Ya
6	Edi Santoso	23000		Dn raos Baru (-7.550113,112.681168)	Gempol	Kab. Pasuruan	JAWA TIMUR	2023	Tidak	Ya	Tidak	Tidak	Tidak	Ya
7	Hariyani BSC	13200		Jl Jetak (-7.670529,112.704691)	Pandaan	Kab. Pasuruan	JAWA TIMUR	2023	Tidak	Ya	Tidak	Tidak	Tidak	Ya
8	Hippam Tirta Sumber Urip	6600		Dn Randupitu (-7.625417,112.708518)	Gempol	Kab. Pasuruan	JAWA TIMUR	2023	Tidak	Ya	Tidak	Tidak	Tidak	Ya
9	P. Rukun	66000		Dn Bareng	Pandaan	Kab. Pasuruan	JAWA TIMUR	2023	Tidak	Ya	Tidak	Tidak	Tidak	Ya
10	Perum Grand Camry	2200		Tudan Kemiri Sewu Pandaan (-7.637736,112.718263)	Pandaan	Kab. Pasuruan	JAWA TIMUR	2023	Tidak	Ya	Tidak	Tidak	Tidak	Ya
11	PT Menara Inti Jaya Group	197000		Jl Surabaya Malang (-7.609640,112.686917)	Gempol	Kab. Pasuruan	JAWA TIMUR	2023	Tidak	Ya	Tidak	Tidak	Tidak	Ya
12	PT Permata Hitam Murni	105000		Jl Pamotan Wringinanom (-7.653229,112.700821)	Pandaan	Kab. Pasuruan	JAWA TIMUR	2023	Tidak	Ya	Tidak	Tidak	Tidak	Ya
13	Lisdes Ngawas Palangsari		1395	Ds Ngawas Palangsari	Puspo	Kab. Pasuruan	JAWA TIMUR	2023	Tidak	Ya	Tidak	Tidak	Tidak	Ya
14	Dimas Kamarullah	10600	270	Dsn Beji Geneng, Ds Sumpersuko RT 02 RW 01, Purwosari	Purwosari	Kab. Pasuruan	JAWA TIMUR	2023	Tidak	Ya	Tidak	Tidak	Tidak	Ya
15	Nurul Khusnan		45	Dsn Karang Tengah RT 05 RW 06, Ds Karang rejo, Purwosari	Purwosari	Kab. Pasuruan	JAWA TIMUR	2023	Tidak	Ya	Tidak	Tidak	Tidak	Ya
16	Soikhin	33000		Parerejo - Purwodadi	Purwosari	Kab. Pasuruan	JAWA TIMUR	2023	Tidak	Ya	Tidak	Tidak	Tidak	Ya
17	Jumadi	23000		Jl Raya Surabaya Situbondo KM 135, Sumberrejo - Paiton	Paiton	Kab. Probolinggo	JAWA TIMUR	2023	Tidak	Ya	Tidak	Tidak	Tidak	Ya
18	Lisdes Desa Opo-opo			Desa Opo-opo, Kec. Krejengan	Krejengan	Kab. Probolinggo	JAWA TIMUR	2023	Tidak	Ya	Tidak	Tidak	Tidak	Ya
19	Mahfud	33000		Dsn Krajan RT 06 RW 01, Ds Glagah, Kec. Pakuniran - Probolinggo	Pakuniran	Kab. Probolinggo	JAWA TIMUR	2023	Tidak	Ya	Tidak	Tidak	Tidak	Ya
20	Nur Fadilah			Dsn Krajan RT 01 RW 01, Ds Glagah, Kec. Pakuniran - Probolinggo	Pakuniran	Kab. Probolinggo	JAWA TIMUR	2023	Tidak	Ya	Tidak	Tidak	Tidak	Ya
21	Herman Permadi	16500		Ds Kramat Karang Geger, Pajarakan	Pajarakan	Kab. Probolinggo	JAWA TIMUR	2023	Tidak	Ya	Tidak	Tidak	Tidak	Ya
22	Perum Sudirman Residence	19500		Jl. Raya Panglima Sudirman No 01 RT 01 RW 01, Kebon Agung - Kraksaan	Kraksaan	Kab. Probolinggo	JAWA TIMUR	2023	Tidak	Ya	Tidak	Tidak	Tidak	Ya
23	Perum Samawa View	66000		Desa Karu Wierak, Kec Paiton - Probolinggo	Paiton	Kab. Probolinggo	JAWA TIMUR	2023	Tidak	Ya	Tidak	Tidak	Tidak	Ya
24	SCTV 1	10600		Dsn Klembun Timur RT 01 RW 01, Ds Ranon, Kec. Pakuniran - Probolinggo	Pakuniran	Kab. Probolinggo	JAWA TIMUR	2023	Tidak	Ya	Tidak	Tidak	Tidak	Ya
25	Agus Priyono			Jl Raya Paiton, Sumberrejo-Paiton	Paiton	Kab. Probolinggo	JAWA TIMUR	2023	Tidak	Ya	Tidak	Tidak	Tidak	Ya

1	PR GRIYA ARDHYA GARINI	250.0	0.498	0.527	DS SURATMAJAN MAOSPATI MAGETAN	DS SURATMAJAN MAOSPATI MAGETAN	DS SURATMAJAN MAOSPATI MAGETAN	JATIM	2022	tidak	tidak	tidak	tidak
2	PR BUMI SUKOLILO	160.0	0.102	0.470	DS SUKOLILO KEC. JIWAN	DS SUKOLILO KEC. JIWAN	DS SUKOLILO KEC. JIWAN	JATIM	2022	tidak	tidak	tidak	tidak
3	RPA ARJUNA TAHAP 2 BAMBANG SUJARWANTO	250.0	0	0	DS MADIGONDO KEC. TAKERAN MAGETAN	DS MADIGONDO KEC. TAKERAN MAGETAN	DS MADIGONDO KEC. TAKERAN MAGETAN	JATIM	2022	tidak	tidak	tidak	tidak
4	PT AMANAH GENERAL TRADING	160.0	0	0	JL. RAYA MLILIR 23/3 DOLOPO	JL. RAYA MLILIR 23/3 DOLOPO	JL. RAYA MLILIR 23/3 DOLOPO	JATIM	2022	tidak	tidak	tidak	tidak
5	SIMAN/PENGGILINGAN PADI	160.0	0.03	0	DN. WATUGUDEL 13/4 DS. PITU NGAWI	DN. WATUGUDEL 13/4 DS. PITU NGAWI	DN. WATUGUDEL 13/4 DS. PITU NGAWI	JATIM	2022	tidak	tidak	tidak	tidak
6	PONPES AL FATAH PUTRI	100.0	0	0	DS. TEMBORO RT 9/2 KARAS	DS. TEMBORO RT 9/2 KARAS	DS. TEMBORO RT 9/2 KARAS	JATIM	2022	tidak	tidak	tidak	tidak
7	PEMECAH BATU KHOMARUDDIN	160.0	0	0	JL. RAYA BATIL BANGUNSARI DOLOPO	JL. RAYA BATIL BANGUNSARI DOLOPO	JL. RAYA BATIL BANGUNSARI DOLOPO	JATIM	2022	tidak	tidak	tidak	tidak
8	PT PP URBAN (PASAR BESAR NGAWI)	250.0	0.39	0	JL. SULTAN AGUNG KEL KETANGGI	JL. SULTAN AGUNG KEL KETANGGI	JL. SULTAN AGUNG KEL KETANGGI	JATIM	2022	tidak	tidak	tidak	tidak
9	SUGIYANTO CS	200.0	0.627	0.735	DK TANJUNGREJO DN KAYUTREJO	DK TANJUNGREJO DN KAYUTREJO	DK TANJUNGREJO DN KAYUTREJO	JATIM	2022	tidak	tidak	tidak	tidak
10	SUTRISNO CS DARSONO	100.0	0	1.388	DN BLUMBING DS. DAWU KEC. PARON	DN BLUMBING DS. DAWU KEC. PARON	DN BLUMBING DS. DAWU KEC. PARON	JATIM	2022	tidak	tidak	tidak	tidak
11	RADIAS FURRY WIDYANTARI/KANDANG	160.0	0	0	DK. KASREMAN NGAWI	DK. KASREMAN NGAWI	DK. KASREMAN NGAWI	JATIM	2022	tidak	tidak	tidak	tidak
12	PR DIAN WIRAJAYA REGENCY	200.0	0.676	0.152	DS BUDUG KEC KWADUNGAN	DS BUDUG KEC KWADUNGAN	DS BUDUG KEC KWADUNGAN	JATIM	2022	tidak	tidak	tidak	tidak
13	BISRI MUSTOFA CS	100.0	0	0.256	DN PALDAPLANG DS KAUMAN	DN PALDAPLANG DS KAUMAN	DN PALDAPLANG DS KAUMAN	JATIM	2022	tidak	tidak	tidak	tidak
14	PASAR BARU DS KEBONAGUNG	160.0	0	0	DS. KEBONAGUNG MAGETAN	DS. KEBONAGUNG MAGETAN	DS. KEBONAGUNG MAGETAN	JATIM	2022	tidak	tidak	tidak	tidak
15	PR NIRWANA LAND	100.0	0	0.283	DS KANUNG KEC. SAWAHAN	DS KANUNG KEC. SAWAHAN	DS KANUNG KEC. SAWAHAN	JATIM	2022	tidak	tidak	tidak	tidak
16	POMPA AIR DS KRANGGAN	2x100	1.348	2.472	DS KRANGGAN RT 4/2	DS KRANGGAN RT 4/2	DS KRANGGAN RT 4/2	JATIM	2022	tidak	tidak	tidak	tidak
17	POMPA KEL TANI RAHAYU (DEDIK SETIAWAN)	100.0	0.427	0.69	DN BANTENGAN BAKUR SAWAHAN	DN BANTENGAN BAKUR SAWAHAN	DN BANTENGAN BAKUR SAWAHAN	JATIM	2022	tidak	tidak	tidak	tidak
18	PABRIK PLASTIK PT SAMIPLAST		0.01	0	DS TIRON KEC.KAB. MADIUN	DS TIRON KEC.KAB. MADIUN	DS TIRON KEC.KAB. MADIUN	JATIM	2022	tidak	tidak	tidak	tidak
19	KANDANG AYAM SISWATI&PUTUT	160.0	1.031	0.052	DN JATEN DS. KRAJAN KEC. PARANG	DN JATEN DS. KRAJAN KEC. PARANG	DN JATEN DS. KRAJAN KEC. PARANG	JATIM	2022	tidak	tidak	tidak	tidak
20	SUDARTO CS KRISJON	200.0	0.689	1.126	DN BINTOYO RT 3/1 BINTOYO	DN BINTOYO RT 3/1 BINTOYO	DN BINTOYO RT 3/1 BINTOYO	JATIM	2022	tidak	tidak	tidak	tidak

21	SAMILAN CS	200.0	0.511	1.397	DN BUNGUR RT 13/3 DS GELUNG	DN BUNGUR RT 13/4 DS GELUNG	DN BUNGUR RT 13/5 DS GELUNG	JATIM	2022	tidak	tidak	tidak	tidak
22	POLITEKNIK NEGERI MADIUN		0.019	0	JL. RINGROAD BARAT MADIUN	JL. RINGROAD BARAT MADIUN	JL. RINGROAD BARAT MADIUN	JATIM	2022	tidak	tidak	tidak	tidak
23	RSUD GENENG KAB NGAWI	200.0	0.036	0	JL. RAYA NGAWI, GENENG	JL. RAYA NGAWI, GENENG	JL. RAYA NGAWI, GENENG	JATIM	2022	tidak	tidak	tidak	tidak
24	PARSITO CS MAMAD	250.0	1.19	2.042	DS SIDOREJO RT 1/2 KEC GENENG	DS SIDOREJO RT 1/2 KEC GENENG	DS SIDOREJO RT 1/2 KEC GENENG	JATIM	2022	tidak	tidak	tidak	tidak
25	MULYONO CS MAMAD	100;160	1.705	2.086	DN NGUBALAN RT 1/5 DS BANJARBANGI	DN NGUBALAN RT 1/5 DS BANJARBANGI	DN NGUBALAN RT 1/5 DS BANJARBANGI	JATIM	2022	tidak	tidak	tidak	tidak
26	TEFA SMK YOSONEGORO	160.0	0	0	JL. TRIPANDITA SUKOWINANGUN MAGETAN	JL. TRIPANDITA SUKOWINANGUN MAGETAN	JL. TRIPANDITA SUKOWINANGUN MAGETAN	JATIM	2022	tidak	tidak	tidak	tidak
27	PR GREEN INDAH SANIKA BHAYANGKARA	250.0	0.156	0.512	JL RAYA SIDOMULYO SAWAHAN	JL RAYA SIDOMULYO SAWAHAN	JL RAYA SIDOMULYO SAWAHAN	JATIM	2022	tidak	tidak	tidak	tidak
28	PT IMS TRADING CENTER	100.0	0.03	0	JL. RAYA RINGROAD BARAT MADIUN	JL. RAYA RINGROAD BARAT MADIUN	JL. RAYA RINGROAD BARAT MADIUN	JATIM	2022	tidak	tidak	tidak	tidak
29	SUMUR POMPA SUPRAPNO CS	250.0	0.321	0.742	DS TANJUNGREJO KEC/KAB. MADIUN	DS TANJUNGREJO KEC/KAB. MADIUN	DS TANJUNGREJO KEC/KAB. MADIUN	JATIM	2022	tidak	tidak	tidak	tidak
30	PABRIK ES KRISTAL CHASANA	160.0	0.118	0	DN. PENCOL CANGAKAN NGAWI	DN. PENCOL CANGAKAN NGAWI	DN. PENCOL CANGAKAN NGAWI	JATIM	2022	tidak	tidak	tidak	tidak
31	SUMUR BOR GODONGAN 2	160.0	0	0	DS. PURWOREJO KEC. GEGER	DS. PURWOREJO KEC. GEGER	DS. PURWOREJO KEC. GEGER	JATIM	2022	tidak	tidak	tidak	tidak
32	SUMUR PDAM MOJOPURNO 2	100.0	0	0.036	DS. MOJOPURNO MAGETAN	DS. MOJOPURNO MAGETAN	DS. MOJOPURNO MAGETAN	JATIM	2022	tidak	tidak	tidak	tidak
33	EKO WHINARTO 2/OLAH BERAS	200.0	0	0	DN. MENDALAN DS. KEDUNGPRAHU KEC. PADAS NGAWI	DN. MENDALAN DS. KEDUNGPRAHU KEC. PADAS NGAWI	DN. MENDALAN DS. KEDUNGPRAHU KEC. PADAS NGAWI	JATIM	2022	tidak	tidak	tidak	tidak
34	PDAM NGRAYUDAN	100.0	0	0.346	DS. NGRAYUDAN KEC. JOGOROGO KAB. NGAWI	DS. NGRAYUDAN KEC. JOGOROGO KAB. NGAWI	DS. NGRAYUDAN KEC. JOGOROGO KAB. NGAWI	JATIM	2022	tidak	tidak	tidak	tidak
35	SUWAJI/DWI RIANTO JATMIKO CS	160.0	0.404	0.656	DN. GEBANGSEWU DS. SEMEN KEC. PARON KAB. NGAWI	DN. GEBANGSEWU DS. SEMEN KEC. PARON KAB. NGAWI	DN. GEBANGSEWU DS. SEMEN KEC. PARON KAB. NGAWI	JATIM	2022	tidak	tidak	tidak	tadka

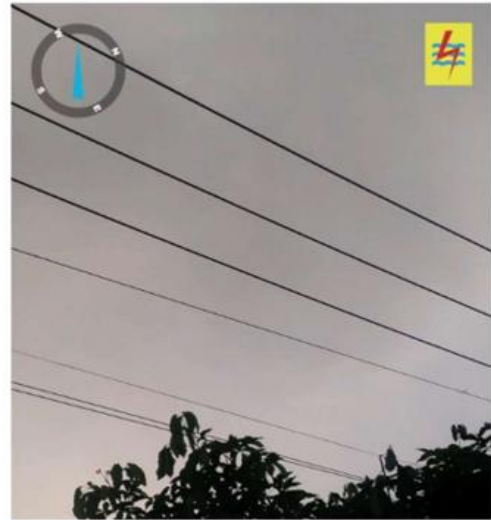
36	POMPA MOH SOLEH CS	100.0	0	0.479	DS. KALIGUNTING KEC. MEJAYAN KAB. MADIUN	DS. KALIGUNTING KEC. MEJAYAN KAB. MADIUN	DS. KALIGUNTING KEC. MEJAYAN KAB. MADIUN	JATIM	2022	tidak	tidak	tidak	tidak
37	SUDIBYO CS/POMPA	250.0	0.766	0.71	DS. SOBRAH KEC. WUNGU KAB. MADIUN	DS. SOBRAH KEC. WUNGU KAB. MADIUN	DS. SOBRAH KEC. WUNGU KAB. MADIUN	JATIM	2022	tidak	tidak	tidak	tidak
38	IBNU WARSITO CS	100.0	0	0.92	DN. TEMPEL DS. TEGUHAN KEC. PARON	DN. TEMPEL DS. TEGUHAN KEC. PARON	DN. TEMPEL DS. TEGUHAN KEC. PARON	JATIM	2022	tidak	tidak	tidak	tidak
39	KASIONO CS/GENDUT	250.0	0.334	1.092	DN. SUREN DS. JENANGAN KEC. KWADUNGAN	DN. SUREN DS. JENANGAN KEC. KWADUNGAN	DN. SUREN DS. JENANGAN KEC. KWADUNGAN	JATIM	2022	tidak	tidak	tidak	tidak
40	TAUPAN DEVYANTO/WATERBOOM	160.0	0	0.05	DS. MOJOPURNO KEC. WUNGU KAB. MADIUN	DS. MOJOPURNO KEC. WUNGU KAB. MADIUN	DS. MOJOPURNO KEC. WUNGU KAB. MADIUN	JATIM	2022	tidak	tidak	tidak	tidak
41	POMPES TRANGKIL 2	200.0	0.144	0	DS. TEMBORO KEC. KARAS KAB. MAGETAN	DS. TEMBORO KEC. KARAS KAB. MAGETAN	DS. TEMBORO KEC. KARAS KAB. MAGETAN	JATIM	2022	tidak	tidak	tidak	tidak
42	ARIS RIANTO CS/POMPA	160.0	0.474	0.716	DS. BINTOYO KEC. PADAS KAB. NGAWI	DS. BINTOYO KEC. PADAS KAB. NGAWI	DS. BINTOYO KEC. PADAS KAB. NGAWI	JATIM	2022	tidak	tidak	tidak	tidak
43	BEDJO CS/POMPA	160.0	0.835	0.743	DN. SEKARJO DS./KEC. MANTINGAN KAB. NGAWI	DN. SEKARJO DS./KEC. MANTINGAN KAB. NGAWI	DN. SEKARJO DS./KEC. MANTINGAN KAB. NGAWI	JATIM	2022	tidak	tidak	tidak	tidak
44	WANTORO CS/POMPA	100.0	0.276	0.572	DS. SOBRAH KEC. WUNGU KAB. MADIUN	DS. SOBRAH KEC. WUNGU KAB. MADIUN	DS. SOBRAH KEC. WUNGU KAB. MADIUN	JATIM	2022	tidak	tidak	tidak	tidak
45	SUDARSONO CS/POMPA	250.0	0.454	1.179	DS. JEBLOGAN KEC. PARON KAB. NGAWI	DS. JEBLOGAN KEC. PARON KAB. NGAWI	DS. JEBLOGAN KEC. PARON KAB. NGAWI	JATIM	2022	tidak	tidak	tidak	tidak
46	RS LAPANGAN DUNGUS	250.0	0.039	0	DN. DUNGUS KEC. WUNGU KAB. MADIUN	DN. DUNGUS KEC. WUNGU KAB. MADIUN	DN. DUNGUS KEC. WUNGU KAB. MADIUN	JATIM	2022	tidak	tidak	tidak	tidak
47	TEGUH WAHYU WIDODO CS	250.0	0.224	0.873	DN. BULAKREJO DS. SEMEN KEC. PARON KAB. NGAWI	DN. BULAKREJO DS. SEMEN KEC. PARON KAB. NGAWI	DN. BULAKREJO DS. SEMEN KEC. PARON KAB. NGAWI	JATIM	2022	tidak	tidak	tidak	tidak
48	SUGIYANTO/KANDANG	160.0	0.421	0.888	DS. PURWOREJO KEC. NGUTORONADI KAB. MAGETAN	DS. PURWOREJO KEC. NGUTORONADI KAB. MAGETAN	DS. PURWOREJO KEC. NGUTORONADI KAB. MAGETAN	JATIM	2022	tidak	tidak	tidak	tidak
49	TOSO CS/ARYO(POMPA)	200.0	0.294	0.783	DN. NGESREP DS. PARAS KEC. PANGKUR KAB. NGAWI	DN. NGESREP DS. PARAS KEC. PANGKUR KAB. NGAWI	DN. NGESREP DS. PARAS KEC. PANGKUR KAB. NGAWI	JATIM	2022	tidak	tidak	tidak	tidak
50	SUYOTO CS/POMPA		0.438	1.484	DS. SIDOREJO KEC. SARADAN KAB. MADIUN	DS. SIDOREJO KEC. SARADAN KAB. MADIUN	DS. SIDOREJO KEC. SARADAN KAB. MADIUN	JATIM	2022	tidak	tidak	tidak	tidak

51	MAHMUD CS/POMPA		0.44	1.213	DS. SUKOLILO KEC. JIWAN KAB. MADIUN	DS. SUKOLILO KEC. JIWAN KAB. MADIUN	DS. SUKOLILO KEC. JIWAN KAB. MADIUN	JATIM	2022	tidak	tidak	tidak	tidak
52	WELLY SUKOCO/PABRIK PLASTIK	100.0	0	0.073	JL. SIDOMAKMUR DS.KEC. BABADAN KAB. PONOROGO	JL. SIDOMAKMUR DS./KEC. BABADAN KAB. PONOROGO	JL. SIDOMAKMUR DS./KEC. BABADAN KAB. PONOROGO	JATIM	2022	tidak	tidak	tidak	tidak
53	PR VILLA PUSAKA MULIA	250.0	0	1.026	DN. ALASTUWO DS. BALEGONDO KEC. NGARIBOYO KAB. MAGETAN	DN. ALASTUWO DS. BALEGONDO KEC. NGARIBOYO KAB. MAGETAN	DN. ALASTUWO DS. BALEGONDO KEC. NGARIBOYO KAB. MAGETAN	JATIM	2022	tidak	tidak	tidak	tidak
54	SUPRIYONO CS/POMPA	100.0	0	0.698	DS. TANJUNG KEC. BENDO KAB. MAGETAN	DS. TANJUNG KEC. BENDO KAB. MAGETAN	DS. TANJUNG KEC. BENDO KAB. MAGETAN	JATIM	2022	tidak	tidak	tidak	tidak
55	RIKA WAHYU SULISTYOWATI/KANDANG	200.0	0	0	DS. BANTENGAN KEC. WUNGU KAB. MADIUN	DS. BANTENGAN KEC. WUNGU KAB. MADIUN	DS. BANTENGAN KEC. WUNGU KAB. MADIUN	JATIM	2022	tidak	tidak	tidak	tidak
56	WASITO CS/POMPA	2x200	1.396	3.575	DN. DONGOL DS. KLAMPISAN KEK. GENENG KAB. NGAWI	DN. DONGOL DS. KLAMPISAN KEK. GENENG KAB. NGAWI	DN. DONGOL DS. KLAMPISAN KEK. GENENG KAB. NGAWI	JATIM	2022	tidak	tidak	tidak	tidak
57	YONO CS/ARYO(POMPA)	250.0	0.7	1.772	DS. JENGGRIK KEC. KEDUNGGALAR KAB. NGAWI	DS. JENGGRIK KEC. KEDUNGGALAR KAB. NGAWI	DS. JENGGRIK KEC. KEDUNGGALAR KAB. NGAWI	JATIM	2022	tidak	tidak	tidak	tidak
58	PABRIK GULA SOEDHONO (REKON 2)		0.607	0	DS. GENENG KEC. GENENG KAB. NGAWI	DS. GENENG KEK. GENENG KAB. NGAWI	DS. GENENG KEC. GENENG KAB. NGAWI	JATIM	2022	tidak	tidak	tidak	tidak
59	TUKJIAN CS/POMPA	100.0	0.706	1.339	DS. GRUDO KEK. NGAWI KAB. NGAWI	DS. GRUDO KEK. NGAWI KAB. NGAWI	DS. GRUDO KEK. NGAWI KAB. NGAWI	JATIM	2022	tidak	tidak	tidak	tidak
60	POMPA TUMIRAN CS	100.0	0.14	0.96	DS. PRAGAK KEC. PARANG KAB. MAGETAN	DS. PRAGAK KEK. PARANG KAB. MAGETAN	DS. PRAGAK KEC. PARANG KAB. MAGETAN	JATIM	2022	tidak	tidak	tidak	tidak
61	YATNO CS/POMPA	250.0	0.855	1.786	DS. KEDUNGBANTEN G KEK. PILANGKENCEN G KAB. MADIUN	DS. KEDUNGBANTEN G KEK. PILANGKENCEN KAB. MADIUN	DS. KEDUNGBANTEN G KEK. PILANGKENCEN KAB. MADIUN	JATIM	2022	tidak	tidak	tidak	tidak
62	SUKAR CS/POMPA	160.0	1.066	1.393	DS. SIDOLAJU KEC. WIDODAREN KAB. NGAWI	DS. SIDOLAJU KEC. WIDODAREN KAB. NGAWI	DS. SIDOLAJU KEC. WIDODAREN KAB. NGAWI	JATIM	2022	tidak	tidak	tidak	tidak
63	POMPA AIR DESA SAMBIREJO	200.0	0.810	1.24	DS. SAMBIREJO KEC. GEGER KAB. MADIUN	DS. SAMBIREJO KEC. GEGER KAB. MADIUN	DS. SAMBIREJO KEC. GEGER KAB. MADIUN	JATIM	2022	tidak	tidak	tidak	tidak
64	PT PEI HAI INTERNATIONAL	250.0	0	0	DS. DUNGMIRI KEC. KARANGJATI KAB. NGAWI	DS. DUNGMIRI KEC. KARANGJATI KAB. NGAWI	DS. DUNGMIRI KEC. KARANGJATI KAB. NGAWI	JATIM	2022	tidak	tidak	tidak	tidak
65	WASIRIN CS/POMPA	200.0	0.666	1.973	DS. DIMONG KEC. MADIUN KAB. MADIUN	DS. DIMONG KEK. MADIUN KAB. MADIUN	DS. DIMONG KEC. MADIUN KAB. MADIUN	JATIM	2022	tidak	tidak	tidak	tidak

66	CV MAKMUR RAYA SEJAHTERA	200.0	0.14	0	JL. PURUBAYA BARAT KEL. TAWANGANOM KAB. MAGETAN	JL. PURUBAYA BARAT KEL. TAWANGANOM KAB. MAGETAN	JL. PURUBAYA BARAT KEL. TAWANGANOM KAB. MAGETAN	JATIM	2022	tidak	tidak	tidak	tidak
67	IMAM MASRURI CS/POMPA	200.0	0.463	0	DS. SIRAPAN KEC. WUNGU KAB. MADIUN	DS. SIRAPAN KEC. WUNGU KAB. MADIUN	DS. SIRAPAN KEC. WUNGU KAB. MADIUN	JATIM	2022	tidak	tidak	tidak	tidak
68	KOLEKTIF EKO CS/POMPA	2x250	0.851	1.7	DN. CENGGRENGAN DS. JEBLOGAN KEC. PARON KAB. NGAWI	DN. CENGGRENGAN DS. JEBLOGAN KEC. PARON KAB. NGAWI	DN. CENGGRENGAN DS. JEBLOGAN KEC. PARON KAB. NGAWI	JATIM	2022	tidak	tidak	tidak	tidak
69	SUTRISNO(EX. DEMIN CS)/POMPA	250.0	0.872	1.704	DN. JENAK DS. BANYUBIRU KEC. WIDODAREN KAB. NGAWI	DN. JENAK DS. BANYUBIRU KEC. WIDODAREN KAB. NGAWI	DN. JENAK DS. BANYUBIRU KEC. WIDODAREN KAB. NGAWI	JATIM	2022	tidak	tidak	tidak	tidak
70	SELEP PADI SUPOYO	100.0	0.24	0	DS. PUCANGANOM KEC. KEBONSARI KAB. MADIUN	DS. PUCANGANOM KEC. KEBONSARI KAB. MADIUN	DS. PUCANGANOM KEC. KEBONSARI KAB. MADIUN	JATIM	2022	tidak	tidak	tidak	tidak
71	SMK YKP MAGETAN	160.0	0.025	0	DS. MOJOPURNO KEC. NGARIBOYO KAB. MAGETAN	DS. MOJOPURNO KEC. NGARIBOYO KAB. MAGETAN	DS. MOJOPURNO KEC. NGARIBOYO KAB. MAGETAN	JATIM	2022	tidak	tidak	tidak	tidak
72	ISWAHYUDI CS/POMPA	250.0	0	0	DN. KUNCEN DS. TAMBAKROMO KEC. PADAS KAB. NGAWI	DN. KUNCEN DS. TAMBAKROMO KEC. PADAS KAB. NGAWI	DN. KUNCEN DS. TAMBAKROMO KEC. PADAS KAB. NGAWI	JATIM	2022	tidak	tidak	tidak	tidak
73	KANDANG AYAM M ISHOMUDIN	100.0	0.106	0	JL. M HASANUDIN DS. MLILIR KEC. DOLOPO KAB. MADIUN	JL. M HASANUDIN DS. MLILIR KEC. DOLOPO KAB. MADIUN	JL. M HASANUDIN DS. MLILIR KEC. DOLOPO KAB. MADIUN	JATIM	2022	tidak	tidak	tidak	tidak
74	KANDANG AYAM YOGA ASMARAH	100.0	1.638	0	DS. SIDOREJO KEC. WUNGU KAB. MADIUN	DS. SIDOREJO KEC. WUNGU KAB. MADIUN	DS. SIDOREJO KEC. WUNGU KAB. MADIUN	JATIM	2022	tidak	tidak	tidak	tidak
75	CV. MULTI PAYMENT NUSANTARA	100.0	0	0	DS. DRIYOREJO KEC. NGUNTORONADI KAB. MAGETAN	DS. DRIYOREJO KEC. NGUNTORONADI KAB. MAGETAN	DS. DRIYOREJO KEC. NGUNTORONADI KAB. MAGETAN	JATIM	2022	tidak	tidak	tidak	tidak
76	KANDANG AYAM SAMAD		0.552	0	DN. SETRO DS. JATIREJO KEC. KASREMAN KAB. NGAWI	DN. SETRO DS. JATIREJO KEC. KASREMAN KAB. NGAWI	DN. SETRO DS. JATIREJO KEC. KASREMAN KAB. NGAWI	JATIM	2022	tidak	tidak	tidak	tidak

77	RSU KABUPATEN NGAWI		0.273	0	JL. DR WAHIDIN NO. 64 DS. KARANGTENGAH KEC./KAB. NGAWI	JL. DR WAHIDIN NO. 64 DS. KARANGTENGAH KEC./KAB. NGAWI	JL. DR WAHIDIN NO. 64 DS. KARANGTENGAH KEC./KAB. NGAWI	JATIM	2022	tidak	tidak	tidak	tidak
78	PT GUDANG GARAM TBK-MPGG	200.0	0.035	0	JL. RAYA MAOSPATI DS. PRAMPÉLAN KEC. KARANGREJO KAB. MAGETAN	JL. RAYA MAOSPATI DS. PRAMPÉLAN KEC. KARANGREJO KAB. MAGETAN	JL. RAYA MAOSPATI DS. PRAMPÉLAN KEC. KARANGREJO KAB. MAGETAN	JATIM	2022	tidak	tidak	tidak	tidak
79	GEDUNG KAMPUS UNS	200.0	0.026	0	JL. IMAM BONJOL KEL. PANDEAN KEC. MEJAYAN KAB. MADIUN	JL. IMAM BONJOL KEL. PANDEAN KEC. MEJAYAN KAB. MADIUN	JL. IMAM BONJOL KEL. PANDEAN KEC. MEJAYAN KAB. MADIUN	JATIM	2022	tidak	tidak	tidak	tidak
80	RUMAH SAKIT MANTINGAN		0.03	0	DN. PULE DS./KEC. MANTINGAN KAB. NGAWI	DN. PULE DS./KEC. MANTINGAN KAB. NGAWI	DN. PULE DS./KEC. MANTINGAN KAB. NGAWI	JATIM	2022	tidak	tidak	tidak	tidak
81	PT WIDODO MAKMUR UNGGAS	250.0	0.38	0	JL. TOL SOLO-NGAWI SAWAH SIDOLAJU KEC. WIDODAREN KAB. NGAWI	JL. TOL SOLO-NGAWI SAWAH SIDOLAJU KEC. WIDODAREN KAB. NGAWI	JL. TOL SOLO-NGAWI SAWAH SIDOLAJU KEC. WIDODAREN KAB. NGAWI	JATIM	2022	tidak	tidak	tidak	tidak
82	CV SUKSES JAYA ABADI		0.023	0	JL. RAYA WONOASRI - MADIUN DS./KEC. WONOASRI KAB. MADIUN	JL. RAYA WONOASRI - MADIUN DS./KEC. WONOASRI KAB. MADIUN	JL. RAYA WONOASRI - MADIUN DS./KEC. WONOASRI KAB. MADIUN	JATIM	2022	tidak	tidak	tidak	tidak
83	UD SUMBER ASRI SEJAHTERA		0.022	0	DS. KLITIK KEC. WONOASRI KAB. MADIUN	DS. KLITIK KEC. WONOASRI KAB. MADIUN	DS. KLITIK KEC. WONOASRI KAB. MADIUN	JATIM	2022	tidak	tidak	tidak	tidak
84	PT WILMAR PADI INDONESIA (NEW PARON)		0.227	0	DS. KARANGTENGAH PRANDON	DS. KARANGTENGAH PRANDON	DS. KARANGTENGAH PRANDON	JATIM	2022	tidak	tidak	tidak	tidak

Appendix 8 : ROW Safety Distance and Socialisation Notes



Appendix 9 : Road Safety Sign and Personal Protective Equipment Photos



Appendix 10 : Material Arrangement with 5S Rules Photos



Appendix 11 : No Oil Seepage from Transformation and Empty Transformation Photos



Appendix 12 : Materials Control Application (In and Out) and Warehouses Materials Photos

Pengelolaan Material Rotam							
Unit	Klasifikasi Material (Dy)						
	Jml Request	Revised	General	Particular	Material	Assesment	
UP3 Pasuruan	24.257	365	2	0	23.930	0	
UP3 Sukondo	983.909	1.808	2	12	981.687	0	
UP3 Banyuwangi	761	562	2	6	181	0	
UP3 Jember	348.964	4.485	123	6	344.370	0	
UP3 Malang	85.019	5.006	0	2	75.011	0	
UP3 Kediri	66.014	470	1	10	65.533	0	
UP3 Madiun	7.289	65	0	6	7.198	0	
UP3 Mojokerto	64.956	40.200	0	0	21.756	0	
UP3 Pamekasan	20.617	79	0	0	20.538	0	
UP3 Surabaya Utara	111.961	14.034	1	10	97.916	0	
UP3 Surabaya Selatan	140.331	8.717	5	19	134.794	0	
UP3 Suponegoro	161.769	44.874	14	12	116.889	0	
UP3 Sidoarjo	32.618	739	2	5	31.872	0	
UP3 Gresik	127.449	1.251	0	6	126.192	0	
UP3 Ponorogo	183.891	19.447	0	7	164.437	0	
UP3 Surabaya Barat	30.492	1.527	1.148	11	27.806	0	
UP3 Jatin	121	31	0	1	89	0	
Jumlah	1.988.227	146.660	1.300	104	1.840.158	0	
Persentase	100%	7.38%	0.07%	0.01%	92.59%	0.00%	

**PENATAAN MATERIAL PDP / BARU**



**PENATAAN MATERIAL MRWI / BEKAS**

